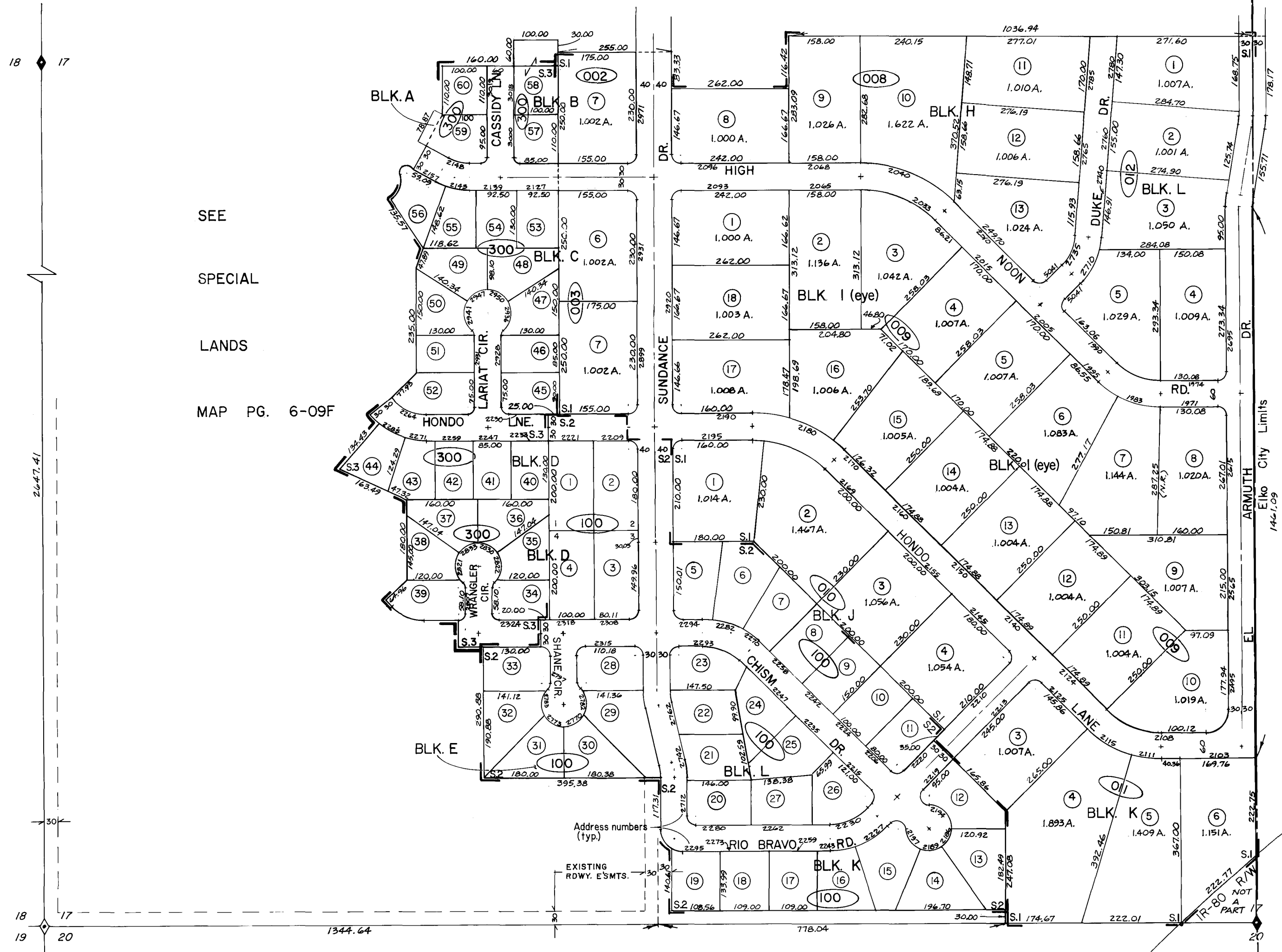
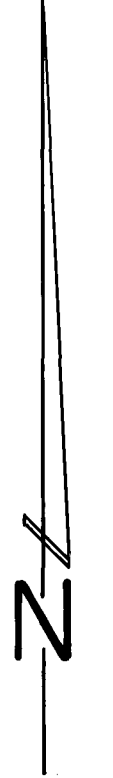


SUNDANCE ESTATES UNIT NOS 1, 2 & 3

91-000



SEE
SPECIAL
LANDS
MAP PG. 6-09F



1" = 200'

FOR ASSESSMENT USE ONLY.
DOES NOT REPRESENT A SURVEY, NO LIABILITY FOR ACCURACY IS ASSUMED. OTHER USES FORBIDDEN UNLESS APPROVED BY ASSESSOR.

S.1- SUNDANCE EST. UNIT NO 1
S.2- SUNDANCE EST. UNIT NO 2
S.3- SUNDANCE EST. UNIT NO 3

Port. of SW 1/4 Sec.17, Twp.34N., Rg. 55 E., M.D.M.

NOTE - Parcel numbers are identical with lot numbers.

REF. NOTE - See Official Subdivision Plats with File Nos 211338; 244672; 274797

ELKO COUNTY

Feb. 1, 99 - KFK