

115°48'30"W

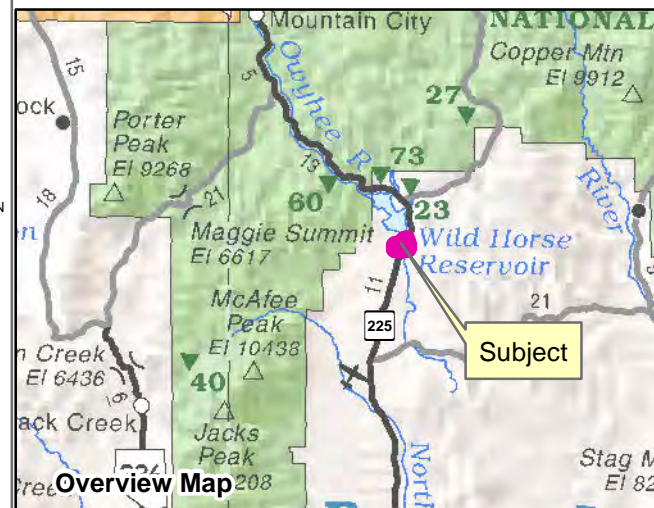
115°48'0"W

41°38'30"N

41°38'30"N

USA - Order of condemnation for Wildhorse Reservoir  
Project Civil No. R-2125, Filed 11/14/68  
US District Court. Grant of Flowage Easement only

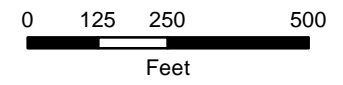
**073-000**  
**WILDHORSE ESTATES**  
Township 44N Range 55E, Section 8  
of the Mount Diablo Meridian, Nevada



**Legend**

- Subject Parcel
- Parcel
- Public Land

LATITUDE AND LONGITUDE ARE APPROXIMATE

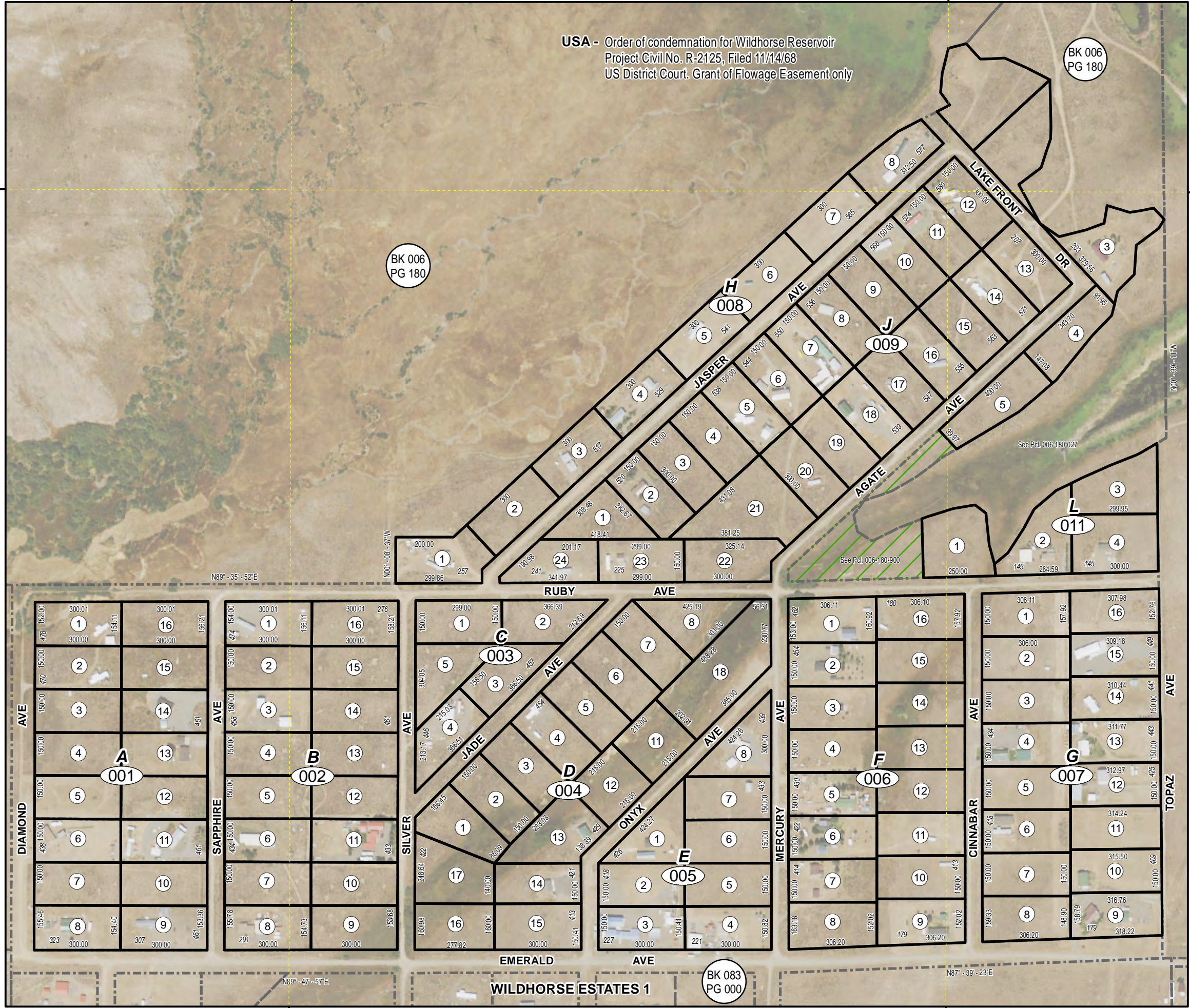


Reference Documents:  
Map # 40078, 775316

This map does NOT represent a survey.  
It is compiled from official records, including  
surveys and deeds. Recorded documents  
should be used for detailed legal information.  
Unless approved by Elko County Assessor,  
other uses are forbidden.

**FOR ASSESSMENT USE ONLY**

Background image - 2019 Pictometry Flyover  
Product of GIS  
Last Update 03/19/2021 JLS



BK 006  
PG 180

BK 006  
PG 180

BK 083  
PG 000

N89° - 35' - 52"E

N00° - 08' - 37"W

N0° - 39' - 11"W

N89° - 47' - 57"E

115°48'30"W

115°48'0"W

N87° - 39' - 23"E