

115°50'40"W

115°50'20"W

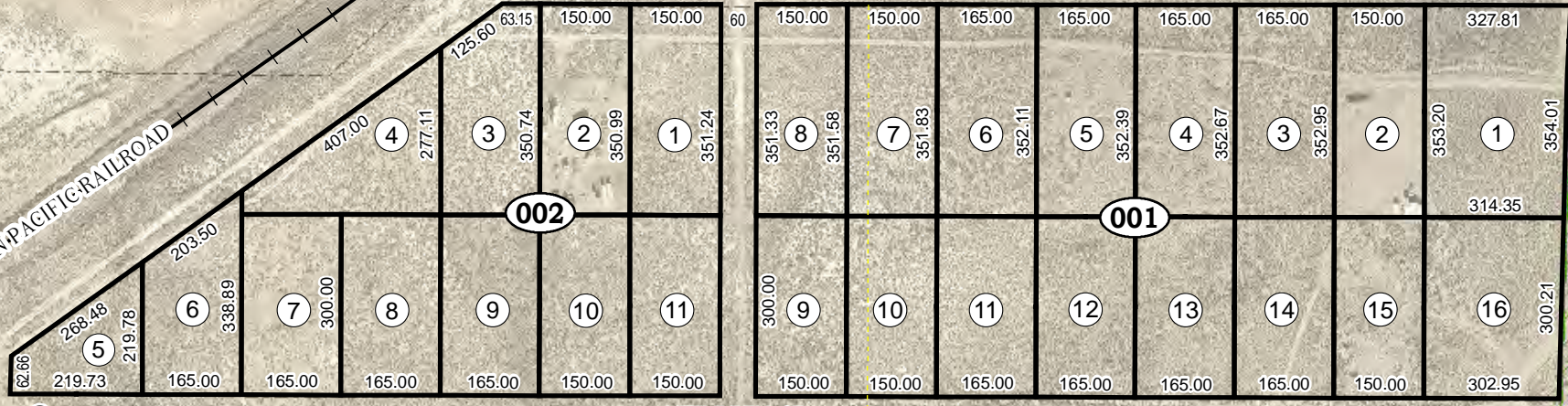
Bk 005
Pg 510

Bk 005
Pg 51B

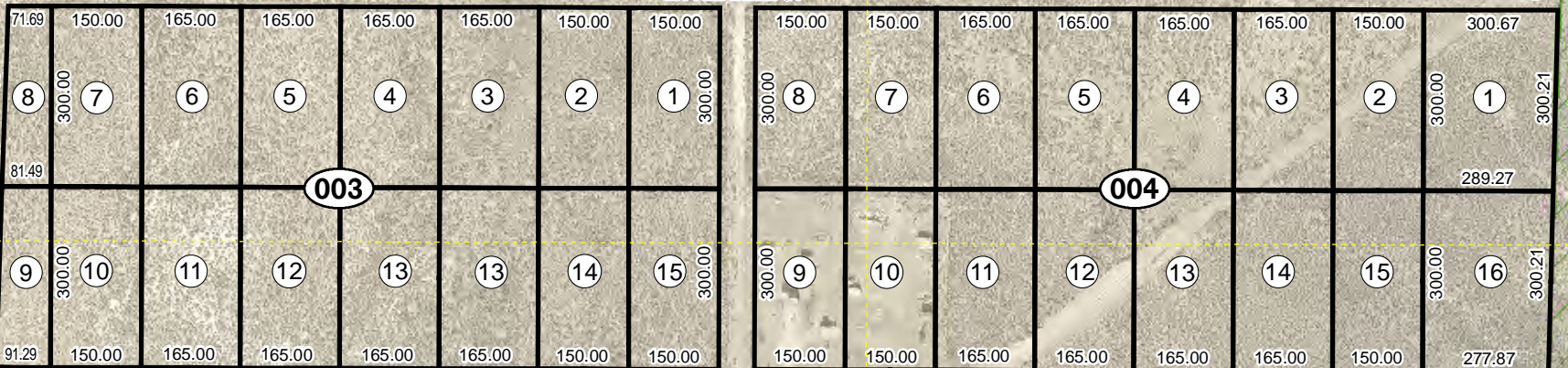
Bk 006
Pg 090

WESTERN PACIFIC RAILROAD

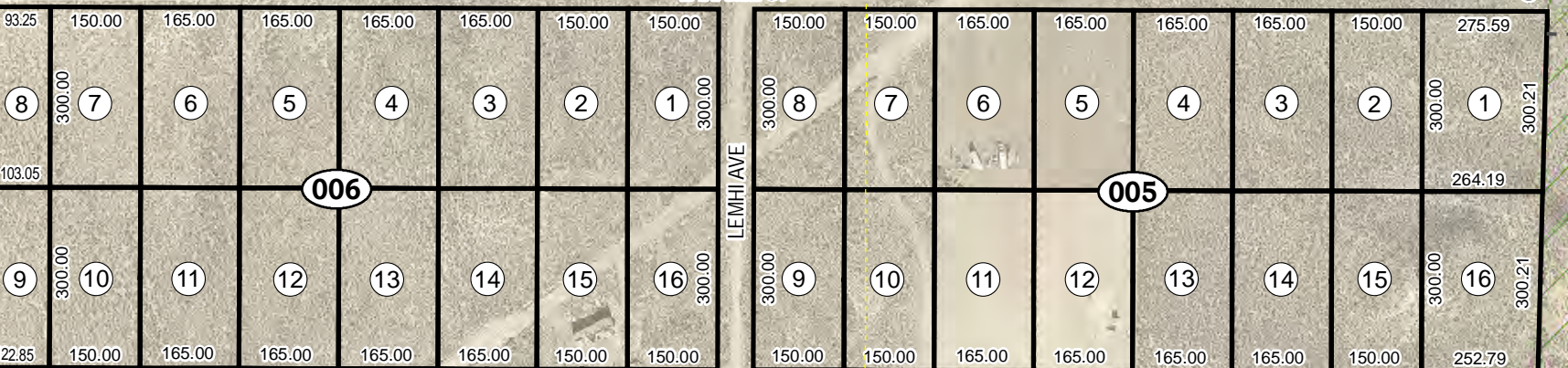
MEDICINE BOW ST



LITTLE BELL ST

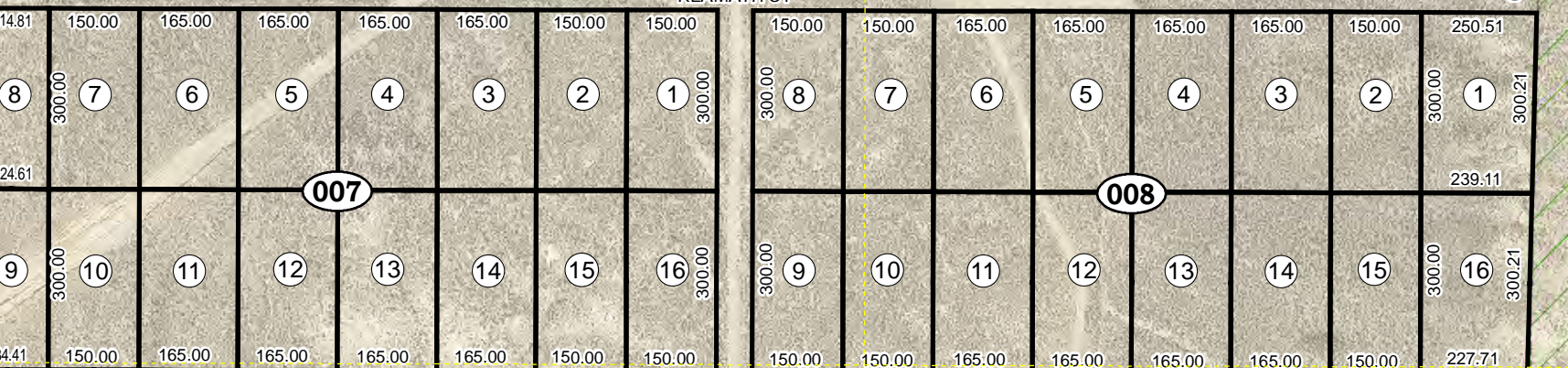


LARAMIE ST



LEMHI AVE

KLAMATH ST



GRAVELLY ST

MEADOW VALLEY RANCHOS UNIT No. 10
Page 2

115°50'40"W

115°50'20"W

40°46'45"N

40°46'45"N

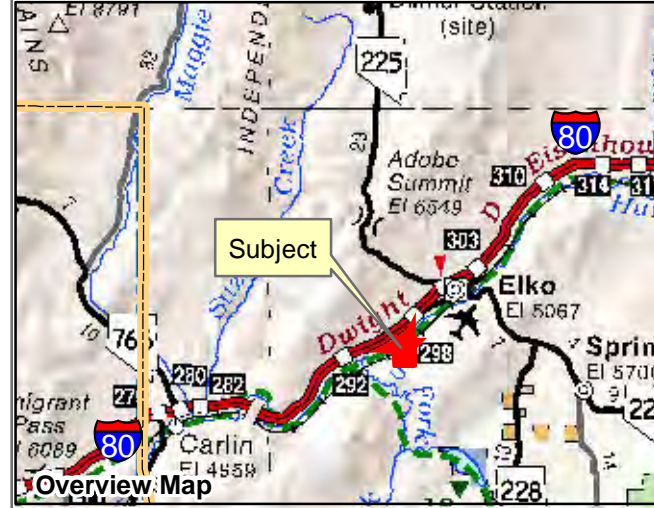
Bk 005
Pg 500

Bk 006
Pg 080

40°46'30"N

40°46'30"N

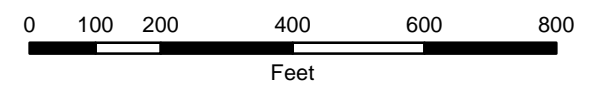
065-001
MEADOW VALLEY RANCHOS
UNIT No. 10
Page 1 of 2
Portion of
Section 1 Township 33N Range 54E
of the Mount Diablo Meridian, Nevada



Legend

- Subject Parcel
- Parcel
- Public Land

Latitude & Longitude are Approximate



Reference Documents:
Subdivision Plat# 26831

This map does NOT represent a survey. It is compiled from official records, including surveys and deeds. Recorded documents should be used for detailed legal information. Unless approved by Elko County Assessor, other uses are forbidden.

FOR ASSESSMENT USE ONLY

Background image - 2014 NAIP flyover downloaded from the W. M. Keck Earth Sciences & Mining Research Information Center.
 Product of GIS
 Last Update 03/22/2017 JLS