

115°50'40"W

115°50'20"W

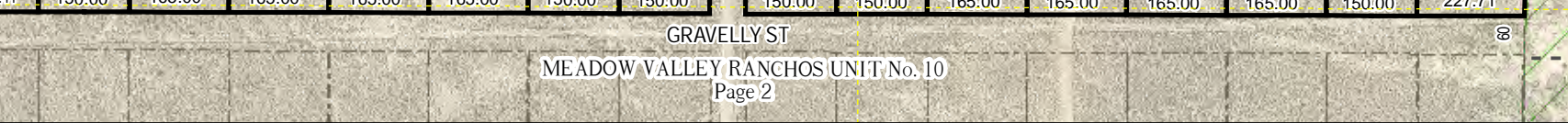
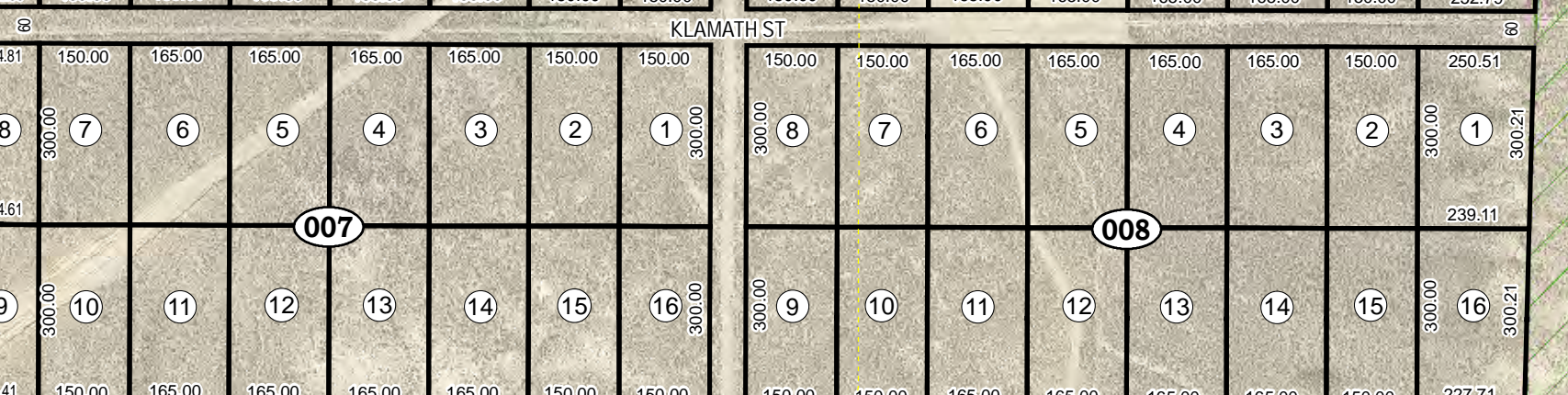
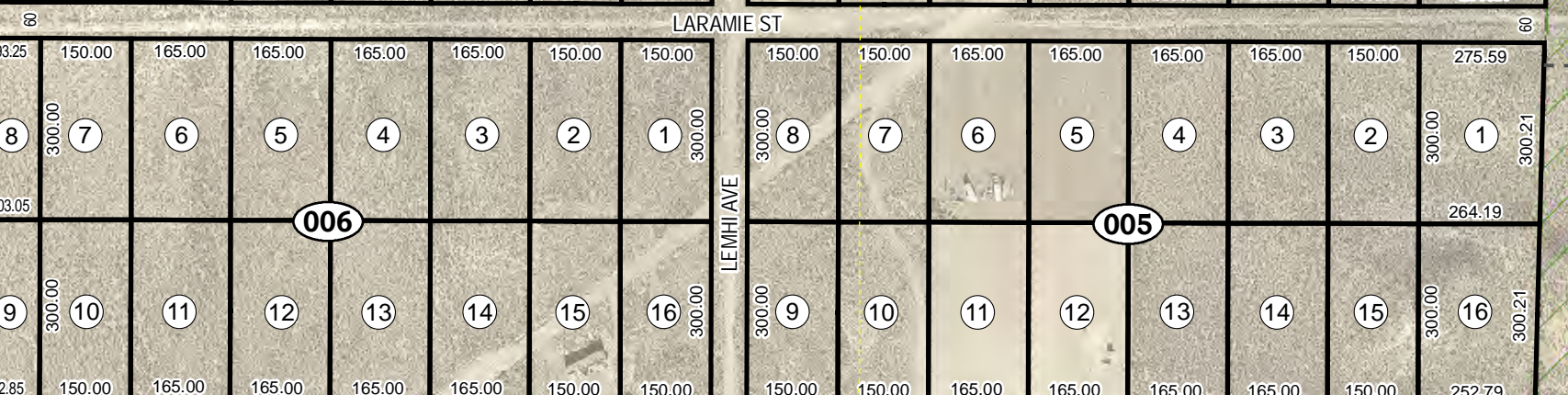
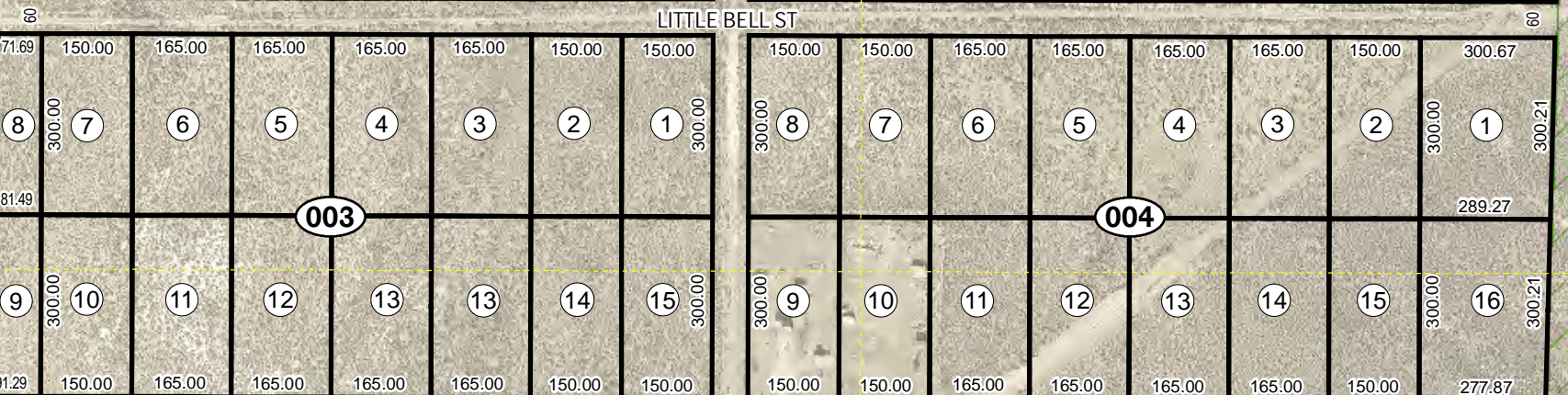
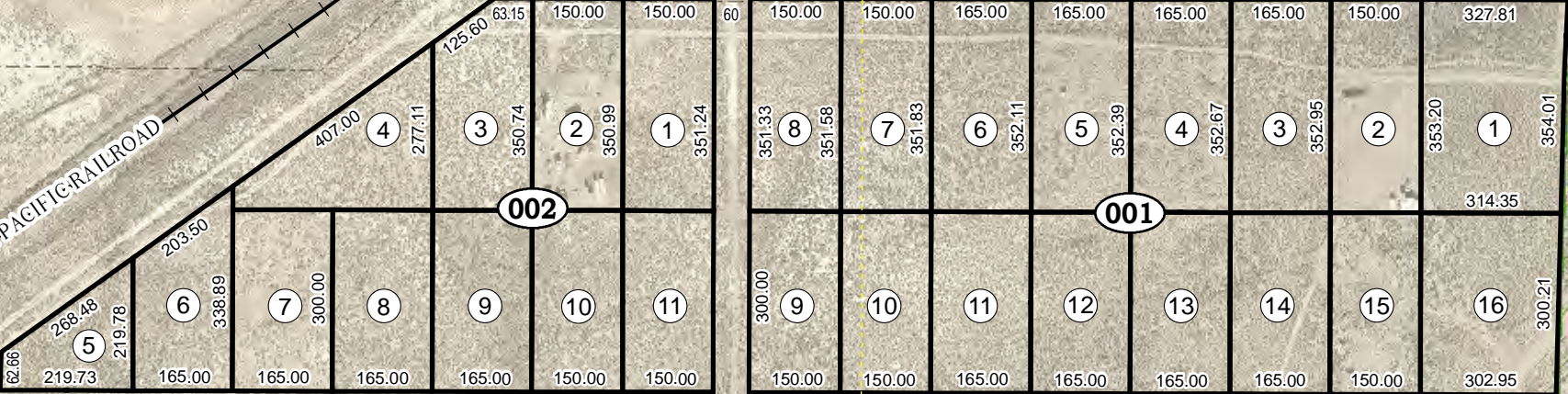
Bk 005
Pg 510

Bk 005
Pg 51B

Bk 006
Pg 090

WESTERN PACIFIC RAILROAD

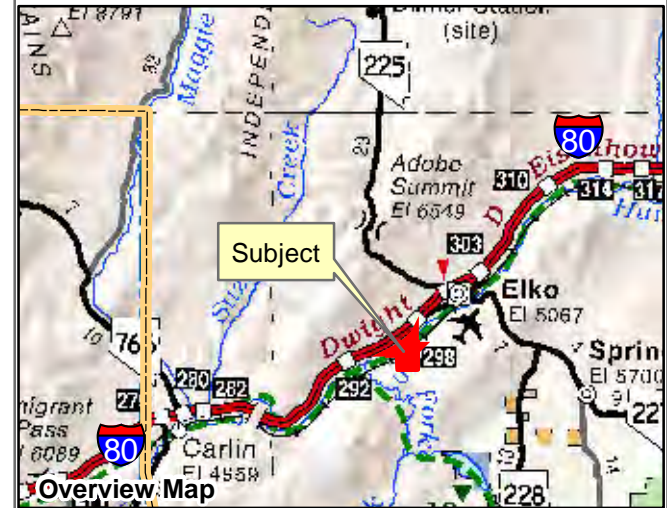
MEDICINE BOW ST



115°50'40"W

115°50'20"W

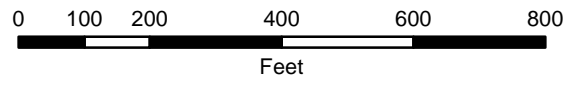
065-001
MEADOW VALLEY RANCHOS
UNIT No. 10
Page 1 of 2
Portion of
Section 1 Township 33N Range 54E
of the Mount Diablo Meridian, Nevada



Legend

- Subject Parcel
- Parcel
- Public Land

Latitude & Longitude are Approximate

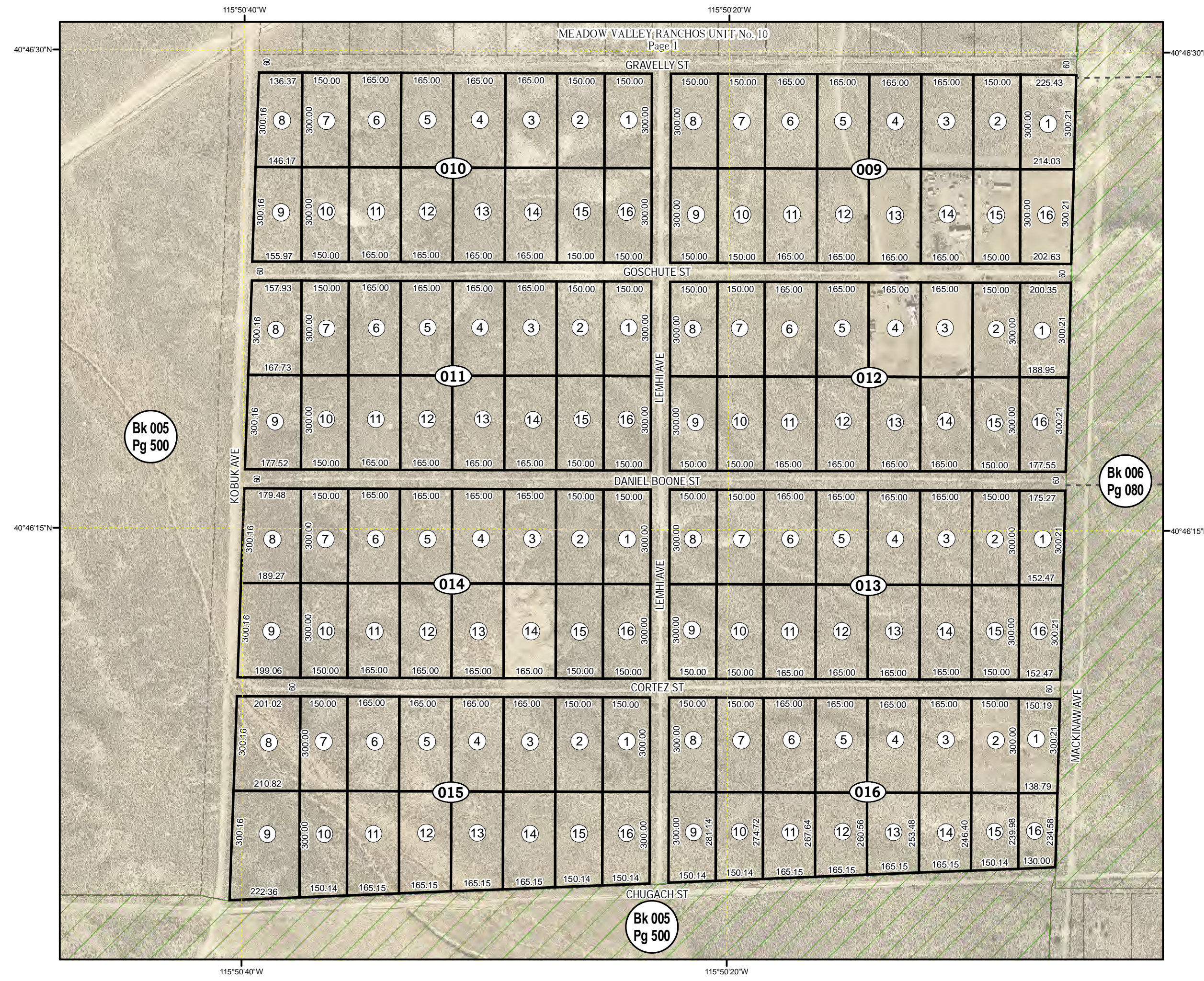


Reference Documents:
Subdivision Plat# 26831

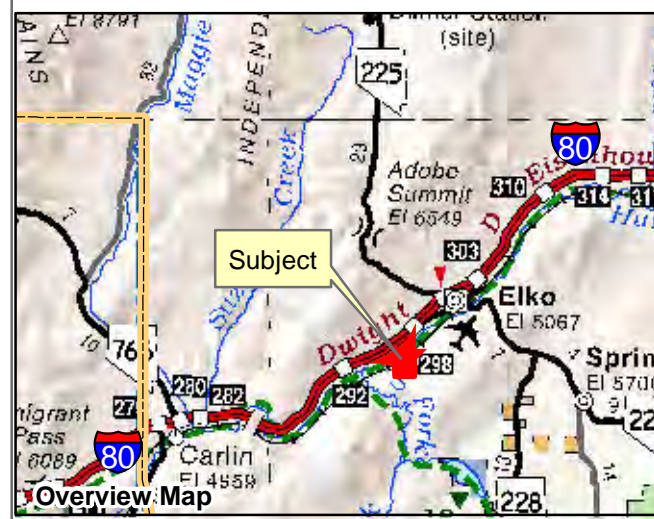
This map does NOT represent a survey.
 It is compiled from official records, including
 surveys and deeds. Recorded documents
 should be used for detailed legal information.
 Unless approved by Elko County Assessor,
 other uses are forbidden.

FOR ASSESSMENT USE ONLY

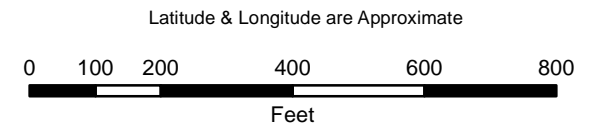
Background image - 2014 NAIP flyover downloaded
 from the W. M. Keck Earth Sciences & Mining Research
 Information Center.
 Product of GIS
 Last Update 03/22/2017 JLS



065-002
MEADOW VALLEY RANCHOS
UNIT No. 10
Page 2 of 2
Portion of
Section 1 Township 33N Range 54E
of the Mount Diablo Meridian, Nevada



- Legend**
- Subject Parcel
 - Parcel
 - Public Land



Reference Documents:
 Subdivision Plat# 26831

This map does NOT represent a survey. It is compiled from official records, including surveys and deeds. Recorded documents should be used for detailed legal information. Unless approved by Elko County Assessor, other uses are forbidden.

FOR ASSESSMENT USE ONLY

Background image - 2014 NAIP flyover downloaded from the W. M. Keck Earth Sciences & Mining Research Information Center.
 Product of GIS
 Last Update 03/21/2017 JLS