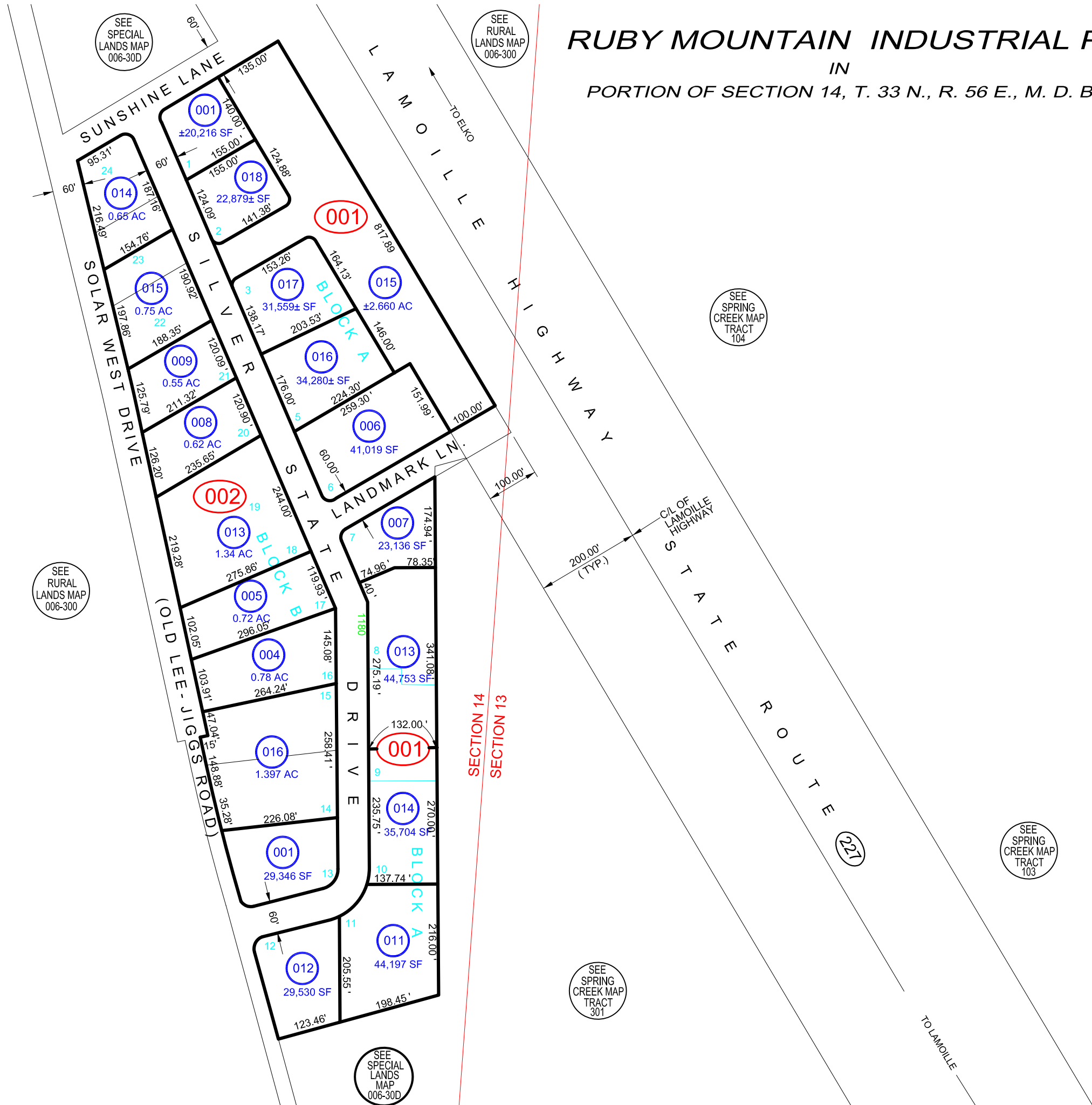


# RUBY MOUNTAIN INDUSTRIAL PARK

IN  
PORTION OF SECTION 14, T. 33 N., R. 56 E., M. D. B. & M.

061-000



SCALE: 1" = 200'

Reference Documents:  
Parcel Map #549494, 765184  
ROS/BLA #609562

**ELKO COUNTY, NEVADA**  
**FOR ASSESSMENT USE ONLY**

*This map does NOT represent a survey. It is compiled from official records, including surveys and deeds. Recorded documents should be used for detailed legal information. Unless approved by Elko County Assessor, other uses are forbidden.*

Revised 02/12/2020 JLS