

SPRING CREEK TRACT 304

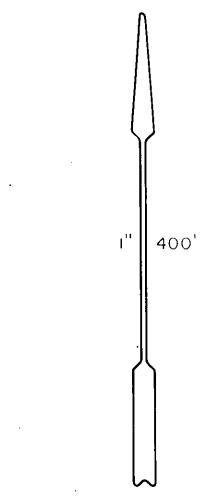
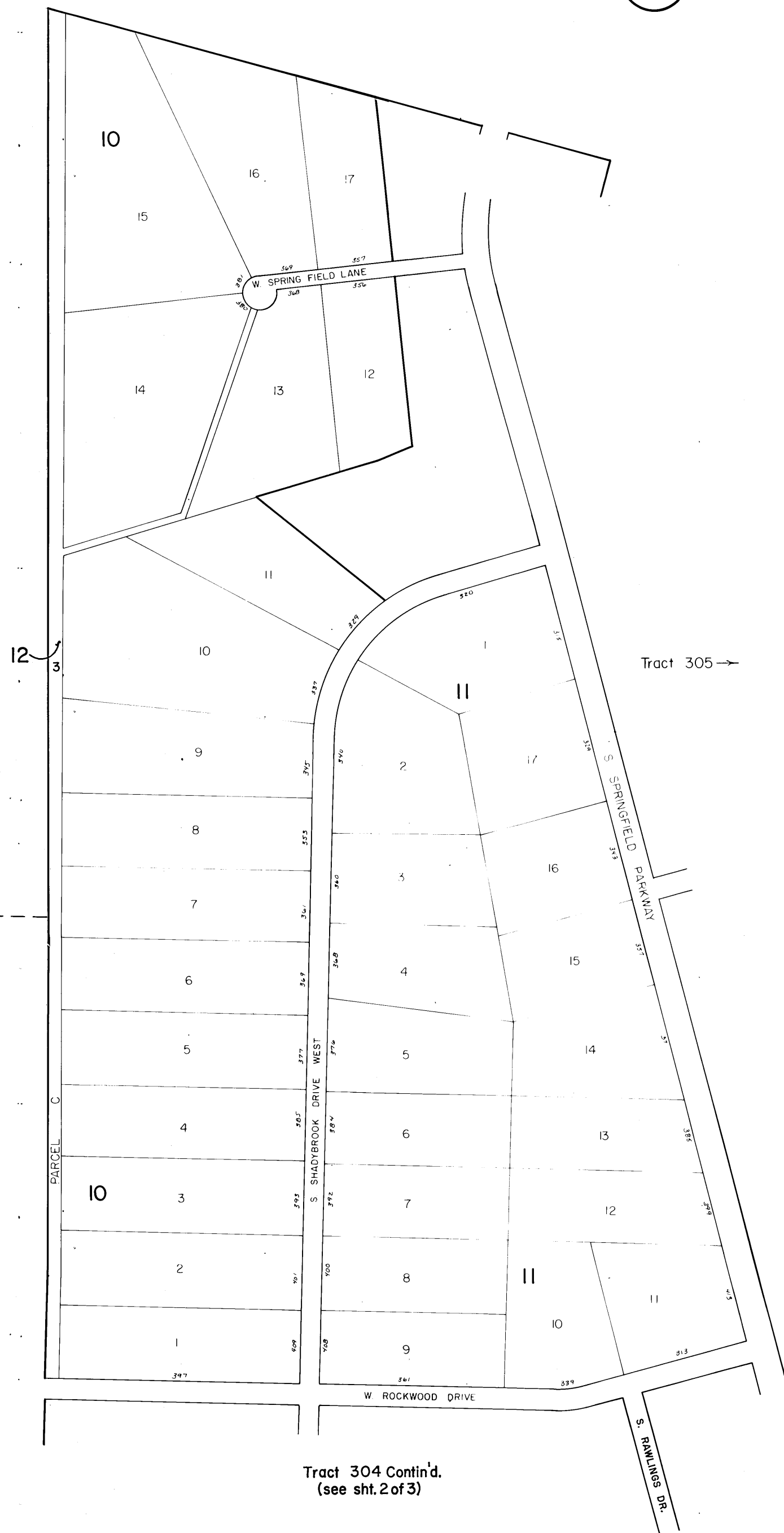
48-000

6-30C

6-30C

6-30

UNSUBDIVIDED (U.S.A.)



Sec. 15, 22 T. 33N., R. 56E.

NOTE:

Numbers along roadway frontages are address numbers.

FOR ASSESSMENT USE ONLY. DOES NOT REPRESENT A SURVEY. NO LIABILITY FOR ACCURACY IS ASSUMED. OTHER USES FORBIDDEN UNLESS APPROVED BY ELKO COUNTY ASSESSOR.

ELKO COUNTY

SHT. 1 OF 3

Jan 21/02 J.C.C.
Apr 12/02 K.L.K.