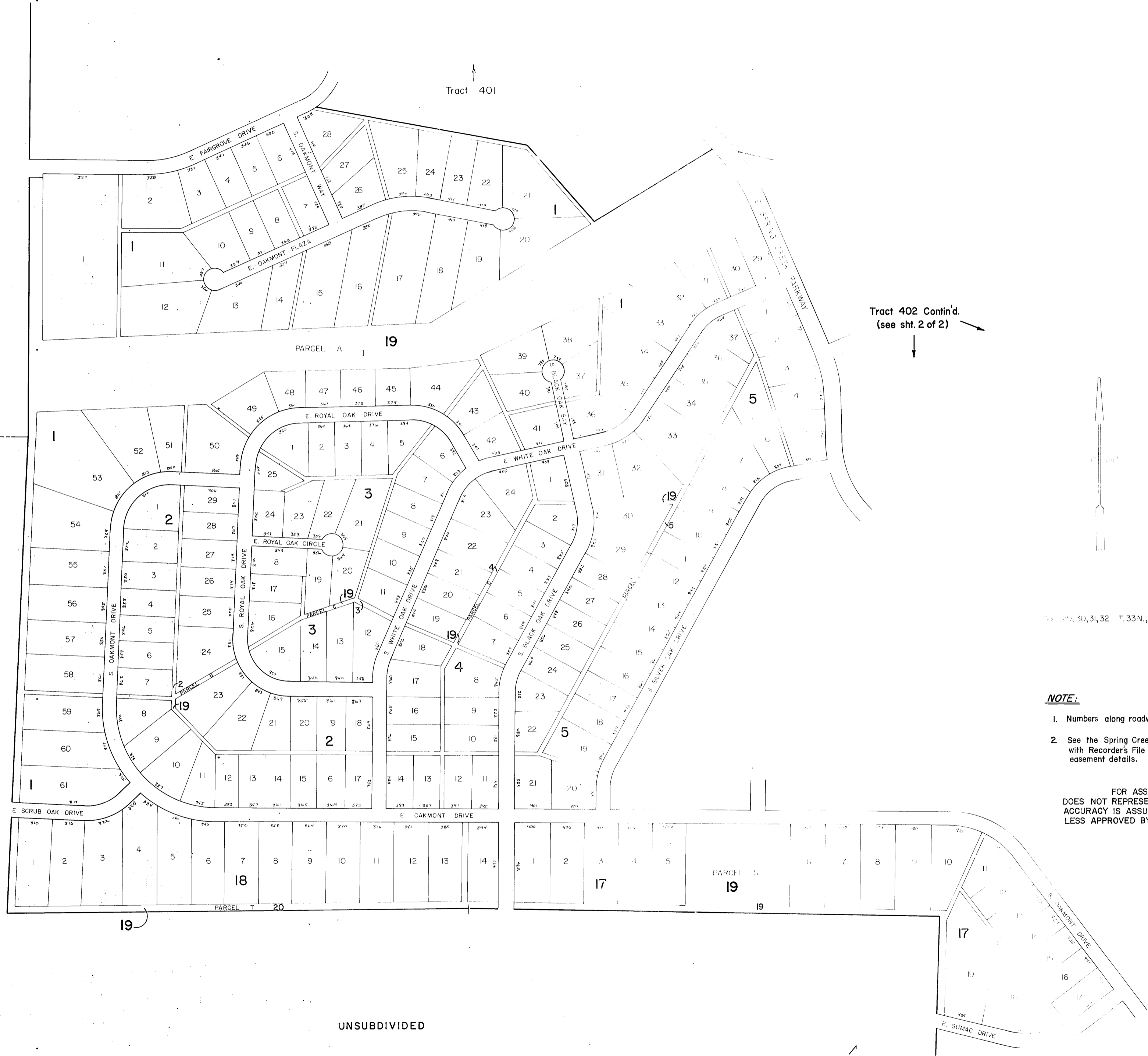


# SPRING CREEK TRACT 402

LIPPARELLI ESTATES

UNSUBDIVIDED



Tract 402 Contin'd.  
(see sht. 2 of 2)

Sec. 29, 30, 31, 32 T. 33N., R. 57E.

**NOTE:**

1. Numbers along roadway frontages are address numbers.
2. See the Spring Creek Corp., Tract 402 subdivision map with Recorder's File No 68748, for property line and easement details.

FOR ASSESSMENT USE ONLY.  
DOES NOT REPRESENT A SURVEY, NO LIABILITY FOR  
ACCURACY IS ASSUMED. OTHER USES FORBIDDEN UN-  
LESS APPROVED BY ELKO COUNTY ASSESSOR.

U.S.A. →