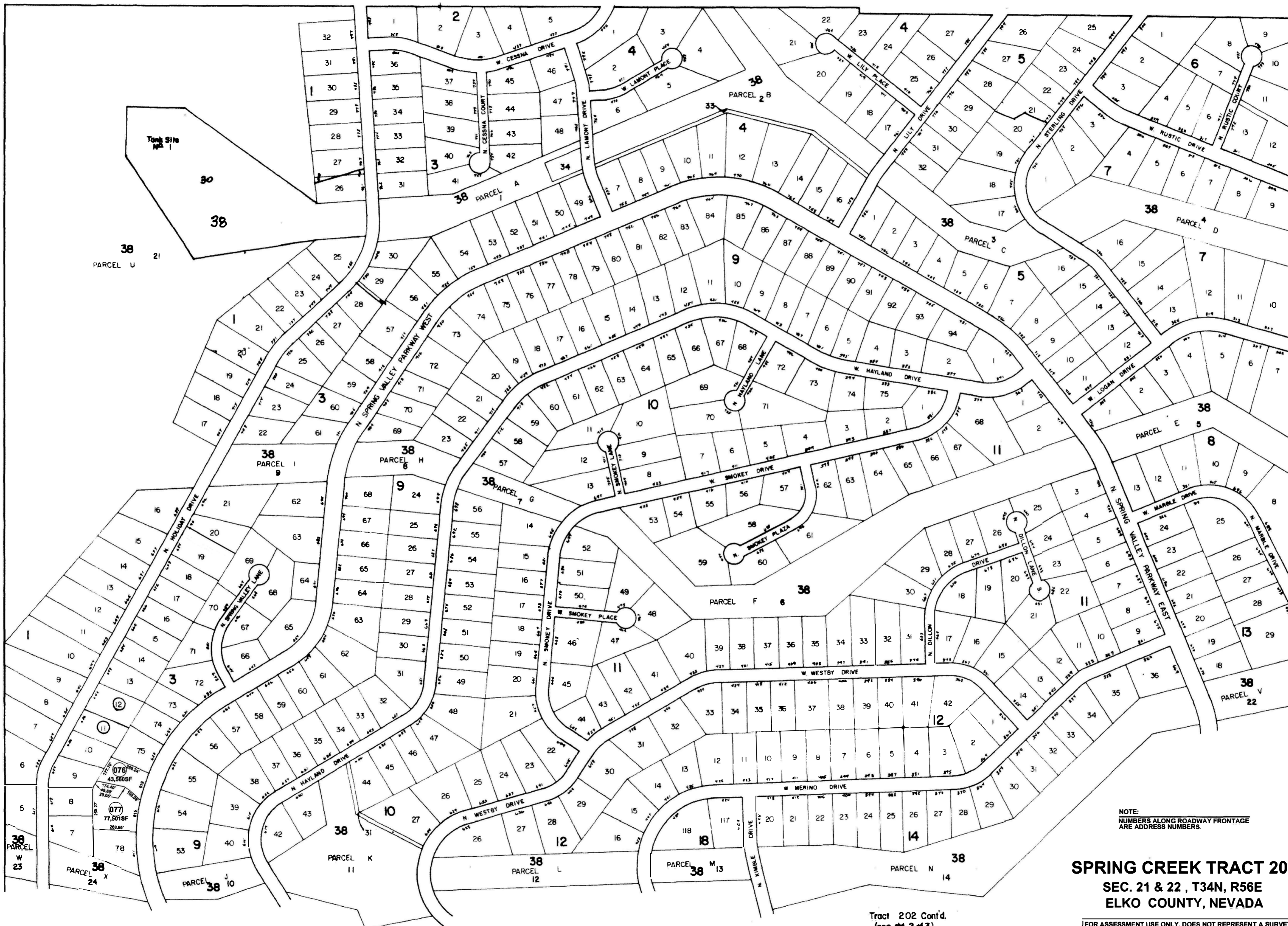


UNSUBDIVIDED



UNSUBDIVIDED

UNSUBDIVIDED

1" = 400'

NOTE:
NUMBERS ALONG ROADWAY FRONTAGE
ARE ADDRESS NUMBERS.

SPRING CREEK TRACT 202
SEC. 21 & 22, T34N, R56E
ELKO COUNTY, NEVADA

Tract 202 Cont'd.
(see sh. 2 of 3)

Tract 202 Cont'd.
(see sh. 1 of 3)

FOR ASSESSMENT USE ONLY. DOES NOT REPRESENT A SURVEY.
NO LIABILITY FOR ACCURACY IS ASSURED. OTHER USES
FORBIDDEN, UNLESS APPROVED BY ELKO COUNTY ASSESSOR.