

PLEASANT VALLEY SUBDIVISION

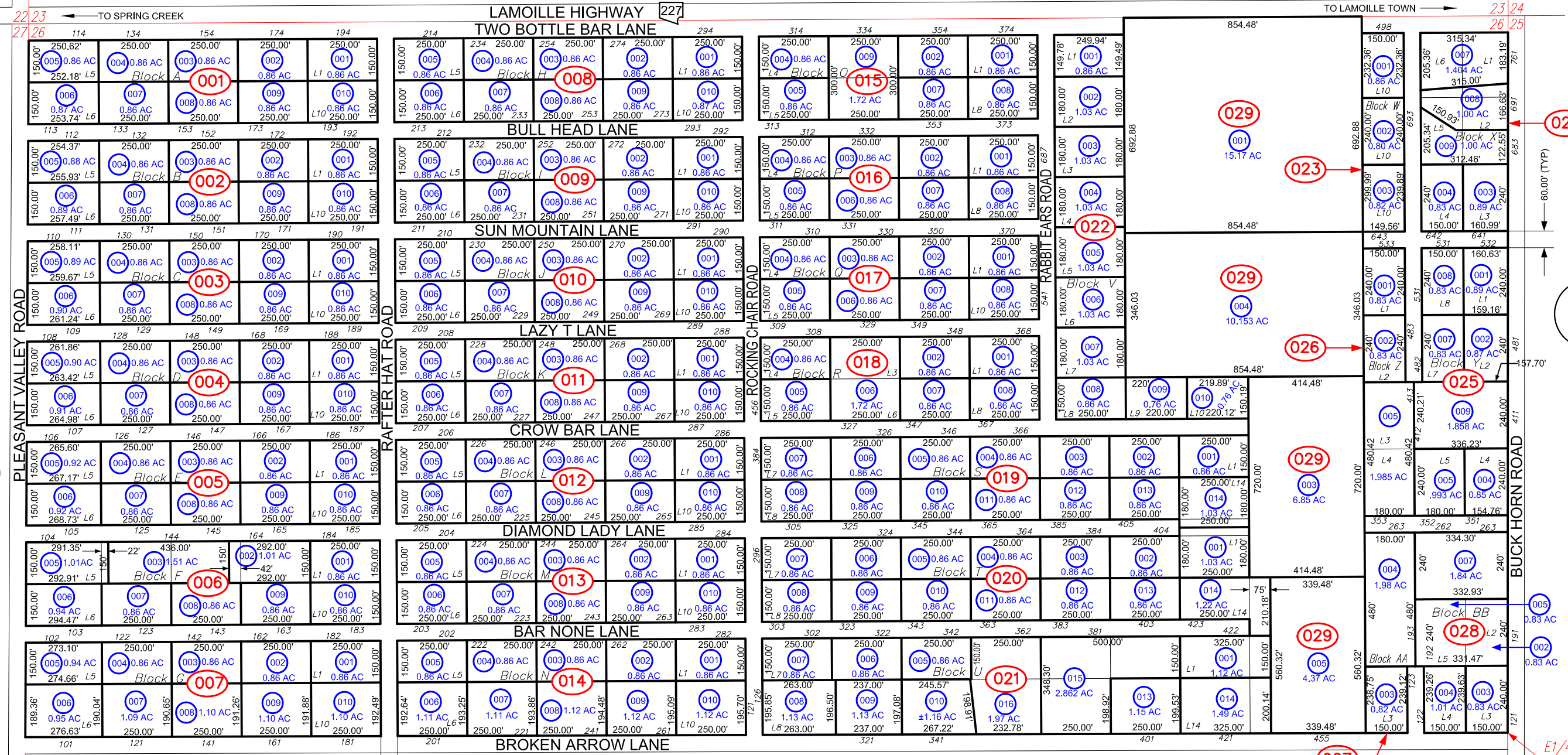
IN

N1/2 OF SECTION 26, T. 33 N., R. 57 E., M.D.B. & M.

023-000

SEE SPECIAL LANDS MAP 006-52D

SEE SPECIAL LANDS MAP 006-52D



SEE SPRING CREEK SUBDIVISION MAP 043-000

SEE RURAL MAP 006-520

GENERAL NOTE :

The assessor's parcel number (APN) is a nine-digit identifier consisting of three elements:
 Example: 023-021-008
 - The first three digits, 023, represent the assessor's map book #.
 - The second three digits, 021, represent the page/block #.
 - The last three digits, 008, represent the parcel itself.

SEE RURAL MAP 006-520

Reference Documents:
 Parcel Map# 572698, 678603, 741758, 742596
 ROS# 570124
 ROS/BLA# 575422, 692544, 703977, 739797
 Map of Rev.# 667211, 703583

ELKO COUNTY, NEVADA

FOR ASSESSMENT USE ONLY

This map does NOT represent a survey. It is compiled from official records, including surveys and deeds. Recorded documents should be used for detailed legal information. Unless approved by Elko County Assessor, other uses are forbidden.

Revised 06/27/2019 JLS