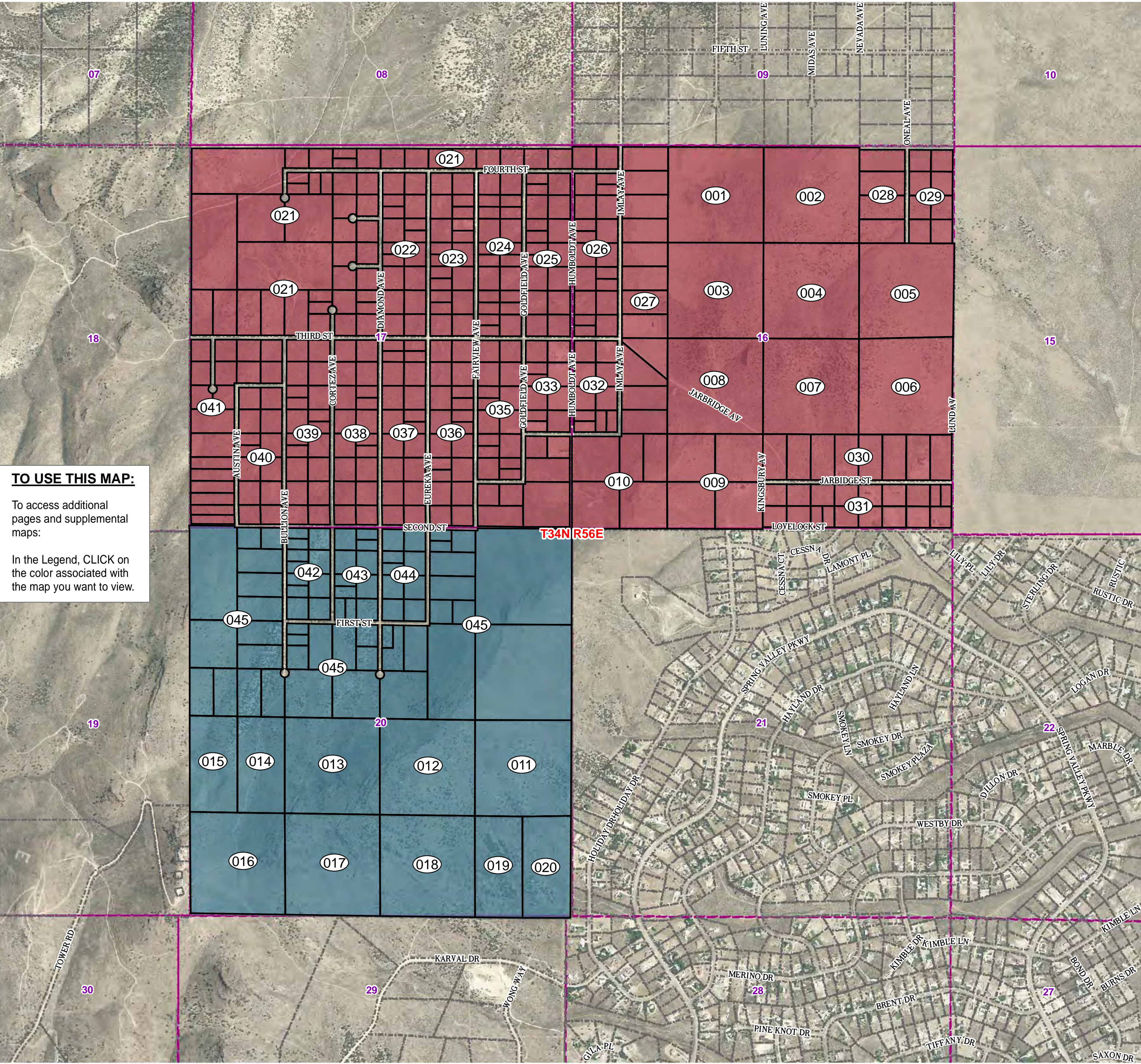
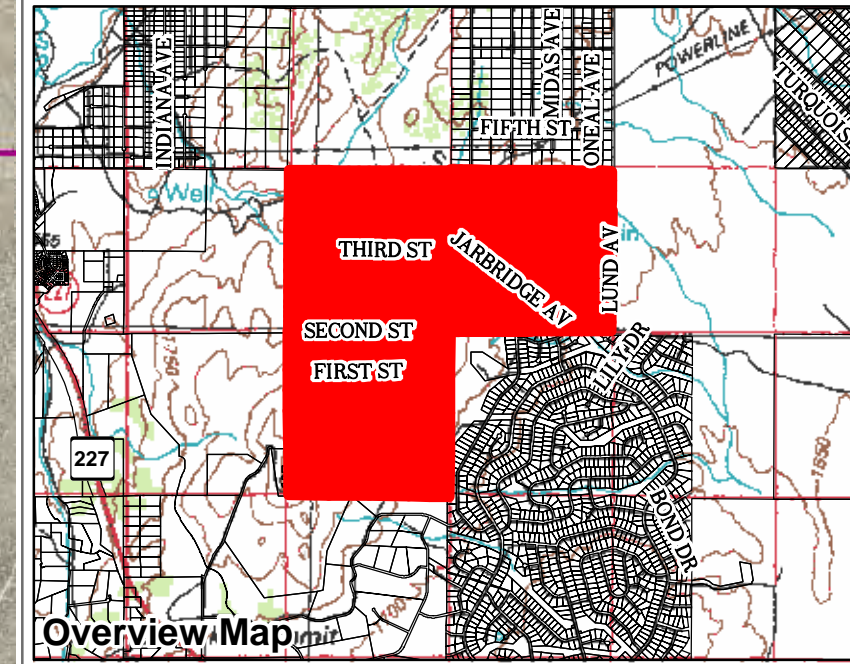


Last Chance Ranch
Unit No. 1



TO USE THIS MAP:
To access additional pages and supplemental maps:
In the Legend, CLICK on the color associated with the map you want to view.

Legend

- Township/Range
- Section

Plat 013-000

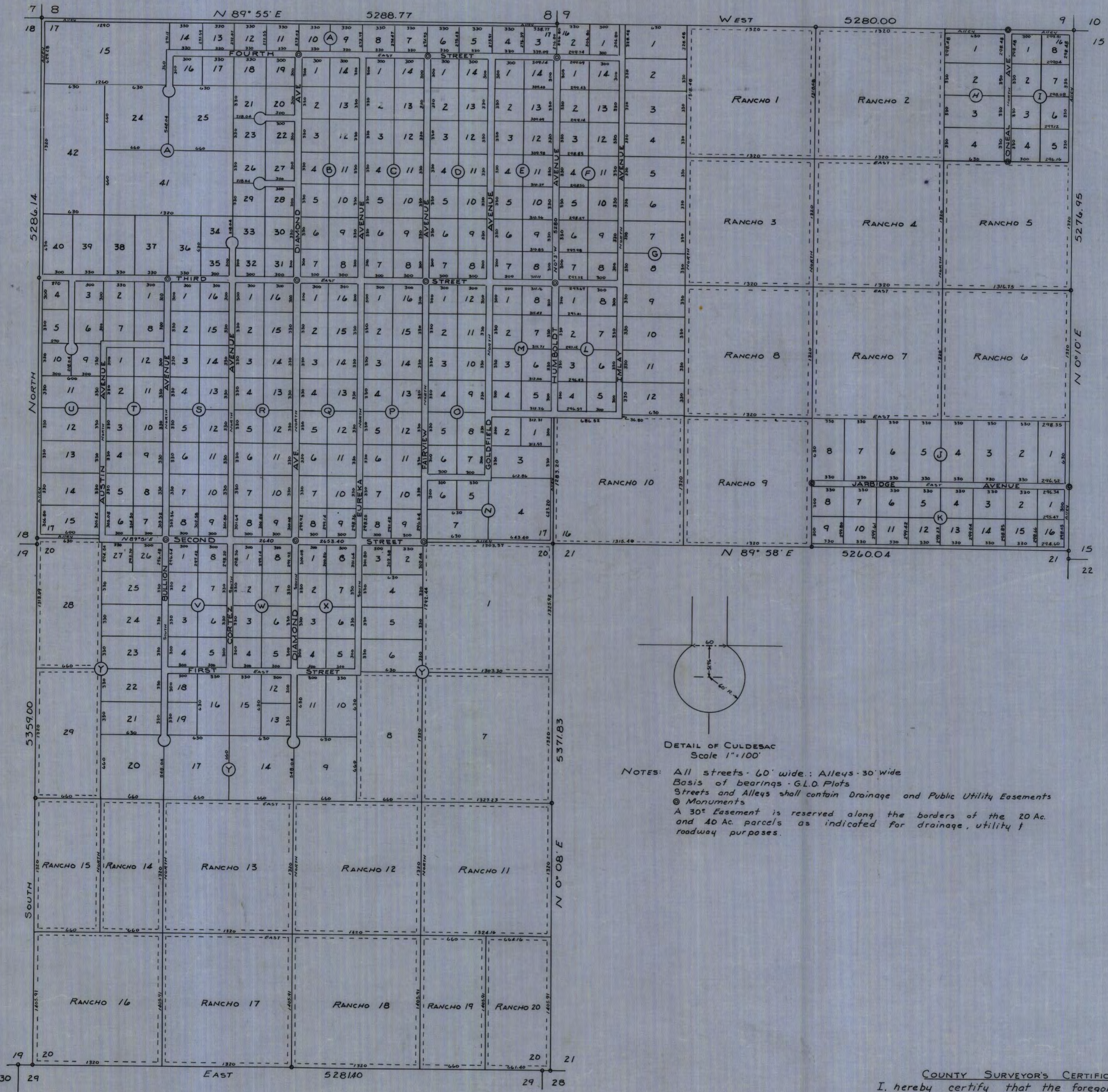
- Page 1
- Page 2

0 500 1,000 2,000 3,000
Feet

N

This map does NOT represent a survey. It is compiled from official records, including surveys and deeds. Recorded documents should be used for detailed legal information. Unless approved by Elko County Assessor, other uses are forbidden.

FOR ASSESSMENT USE ONLY



**LAST CHANCE RANCH
Unit No. 1**

OWNERS CERTIFICATE:

Know all men by these presents, that the undersigned, Last Chance Ranch, Inc., being the owners of sections 16, 17 & 20, T 34 N, R 56 E, M.D.B. & M., that we hereby consent to the preparation and filing of this map, that we do hereby offer without reservation, for street and public utility purposes all of the areas delineated for such purposes on this map. In witness whereof we have hereto set our hands this 5th day of November, 1960.

Ben Mednick Richard Mednick
 PRESIDENT SECRETARY

STATE OF CALIFORNIA } ss.
 COUNTY OF LOS ANGELES }
 On this 5th day of November 1960 before me the undersigned personally appeared Ben Mednick and Richard Mednick known to me to be the officers of the corporation that executed the foregoing and acknowledged to me that the signatures were made by the officers of said corporation and that they executed the same freely and voluntarily for the uses and purposes therein mentioned.

My Commission Expires: 9-3-63 Dani Salomon
 NOTARY PUBLIC

SURVEYORS CERTIFICATE:

I, Mark Chilton, do hereby certify that this plat is a true and accurate map of the land surveyed under my direction, that the blocks, lots & streets have been definitely established and perpetuated in strict accordance with the law and as shown hereon, and that said blocks, lots and streets are situated wholly within Sections 16, 17 & 20, T 34 N, R 56 E, M.D.B. & M.

Mark Chilton
 R.E. No. 1404

APPROVAL:

At a regular meeting of the Board of County Commissioners of Elko County, State of Nevada held on the 9th day of November 1960, the above map was duly and regularly approved, and the offer of dedication was rejected at this time to remain open as a pending offer of dedication pursuant to N.R.S. 278.390

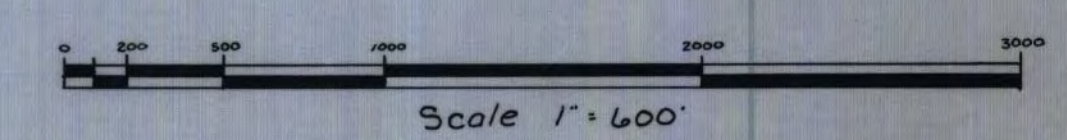
ATTEST: L. K. Lane George F. Colby
 CLERK CHAIRMAN OF THE BOARD OF COUNTY COMMISSIONERS

APPROVAL:

At a regular meeting of the Board of Supervisors of the City of Elko, County of Elko, State of Nevada, held on the 15th day of November 1960, the above map was duly and regularly approved as a Tentative Map pursuant to N.R.S. 278.340

ATTEST: Alis Elyer Frank J. Williams
 CLERK MAYOR

File No. 2351 Filed at the request of: Kenneth L. Mann
 Date Nov. 16, 1960 COUNTY RECORDER, ELKO COUNTY, NEVADA



COUNTY SURVEYOR'S CERTIFICATE
 I, hereby certify that the foregoing map was prepared by the Deputy County Surveyor of Elko County, Nevada; that I have examined the foregoing final map and the subdivision as shown thereon is substantially the same as the Tentative Map, with approved alterations, that there were no local ordinances applicable at the time of approval, that I am satisfied that the map is technically correct and complies with Chapter 278 N.R.S.

W. S. Settelmeier
 COUNTY SURVEYOR - ELKO COUNTY, NEVADA
 Nov. 16, 1960
 DATE

LAST CHANCE RANCH, INC.
UNIT No. 1 SUBDIVISION
SECTIONS 16, 17, & 20 - T 34 N, R 56 E
M.D.B. & M.

OFFICE OF: SETTELMEYER & CHILTON, ELKO, NEVADA
 NOVEMBER 1960

SEE R/S BOUNDARY LINE ADJ
 #419880 (1994)
 RE: LOTS 9 & 10 BLK G