

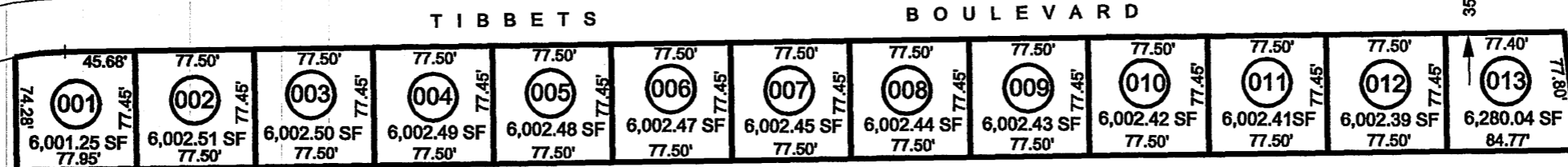
VILLAGE I, PHASE I SUBDIVISION

010-748

SEE SHEET 010-740

SEE SHEET 010-740

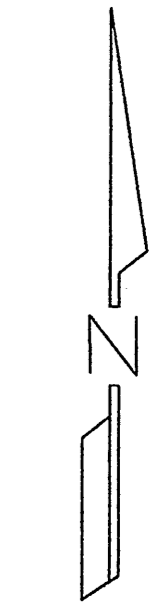
SEE SHEET 010-741
Pg. 2



S00°57'42"E
1320.77'

B. L. M.

SEE SHEET 010-740



SCALE: 1" = 100'

15	17
19	20

CITY OF WEST WENDOVER
 PORTION OF SECTION 17, T. 33 N., R. 70 E., M. D. B. & M.
 ELKO COUNTY, NEVADA

FOR ASSESSMENT USE ONLY
 DOES NOT REPRESENT A SURVEY
 NO LIABILITY FOR ACCURACY IS ASSURED
 UNLESS APPROVED BY ELKO COUNTY ASSESSOR,
 OTHER USES ARE FORBIDDEN
 REVISED 05/1999 MAC