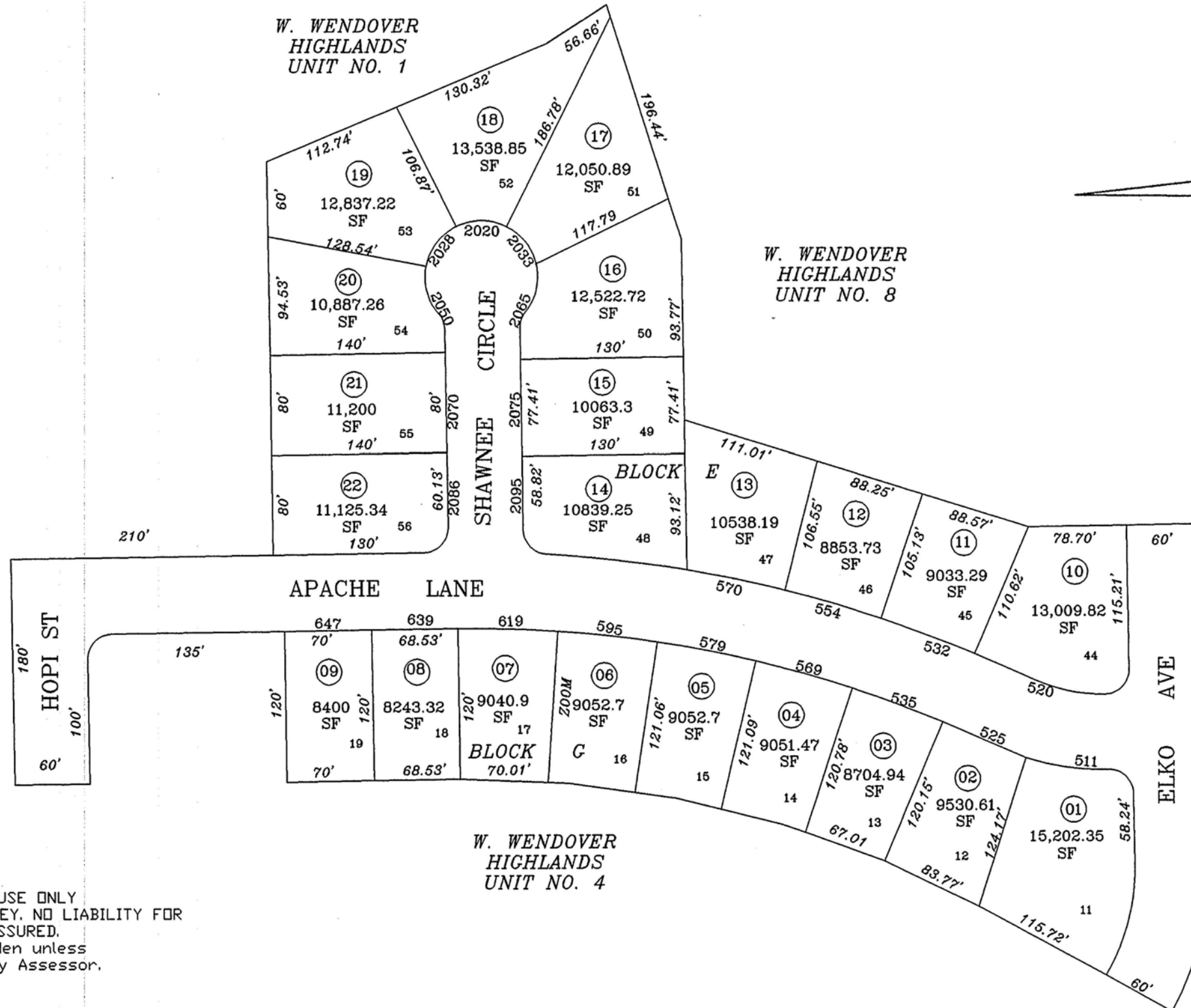


WEST WENDOVER HIGHLANDS UNIT NO. 9
 Port of Sec. 17, T. 33 N., R. 70 E., M.D.B. & M.

10-743



1"=100'

E.C.S.D.

NOTE:
 Source ref. is the official subdiv. plat with File No. 307773
 Last Revised 5/98LS

FOR ASSESSOR'S USE ONLY
 DOES NOT REPRESENT A SURVEY. NO LIABILITY FOR ACCURACY IS ASSURED.
 Other uses forbidden unless approved by County Assessor.

Elko