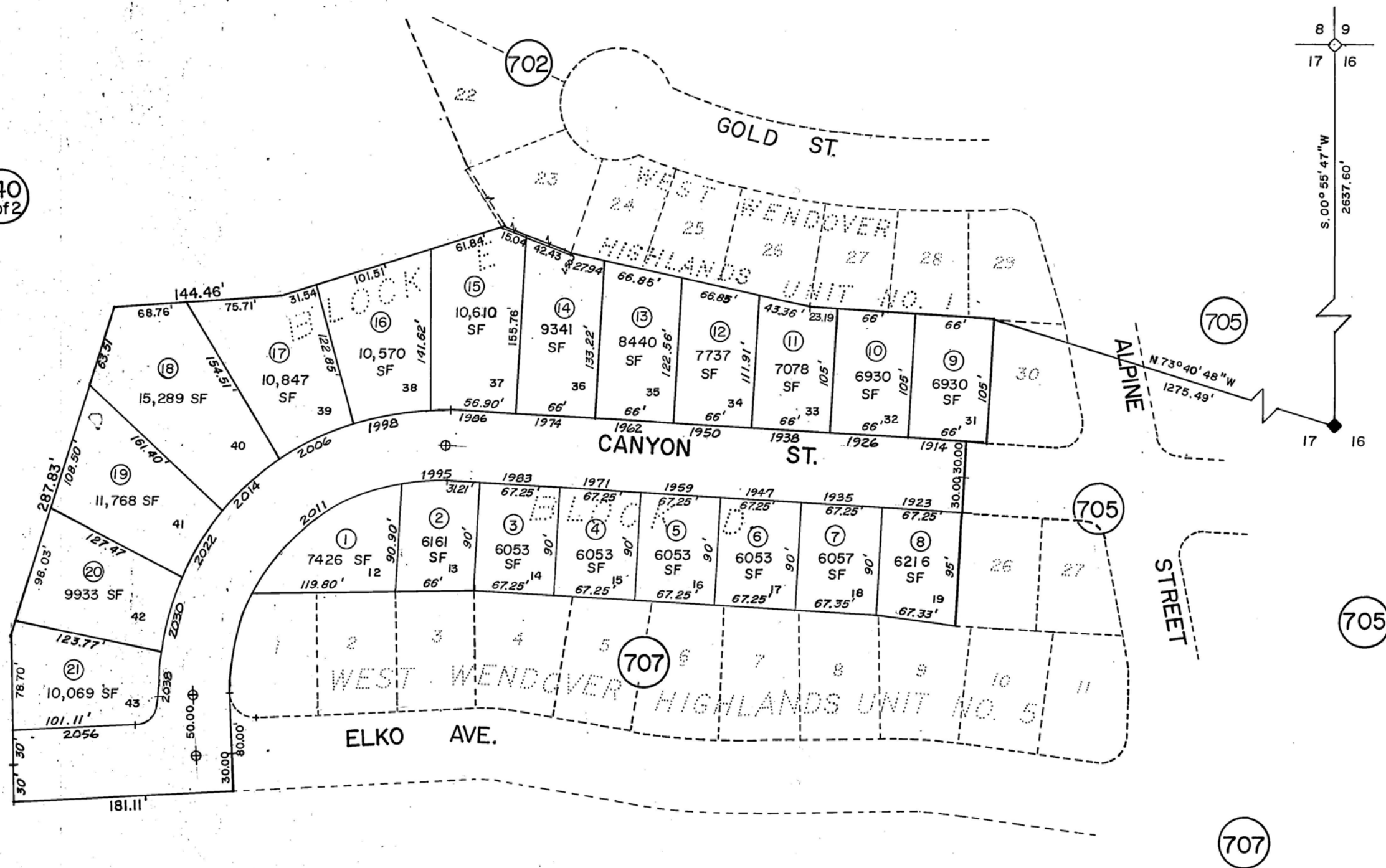


740  
2 of 2



ELKO COUNTY SCHOOL DISTRICT

ASSESSMENT USE ONLY. DOES NOT REPRESENT A SURVEY. NO LIABILITY FOR ACCURACY IS ASSURED.

740  
2 of 2

Located in Sec. 17, T.33N., R. 70E., M.D.B.&M.

REF. NOTE: See Official Subdivision Plat with File No 272270

REV	Jan, 4, '90	K.K.
-----	-------------	------