

# VILLAGE ON THE GREEN CONDOMINIUMS

PLANNED UNIT DEVELOPMENT  
A COMMON-INTEREST COMMUNITY  
IN

POR. OF SEC. 17, T. 33 N., R. 70 E., M.D.B. & M.  
CITY OF WEST WENDOVER

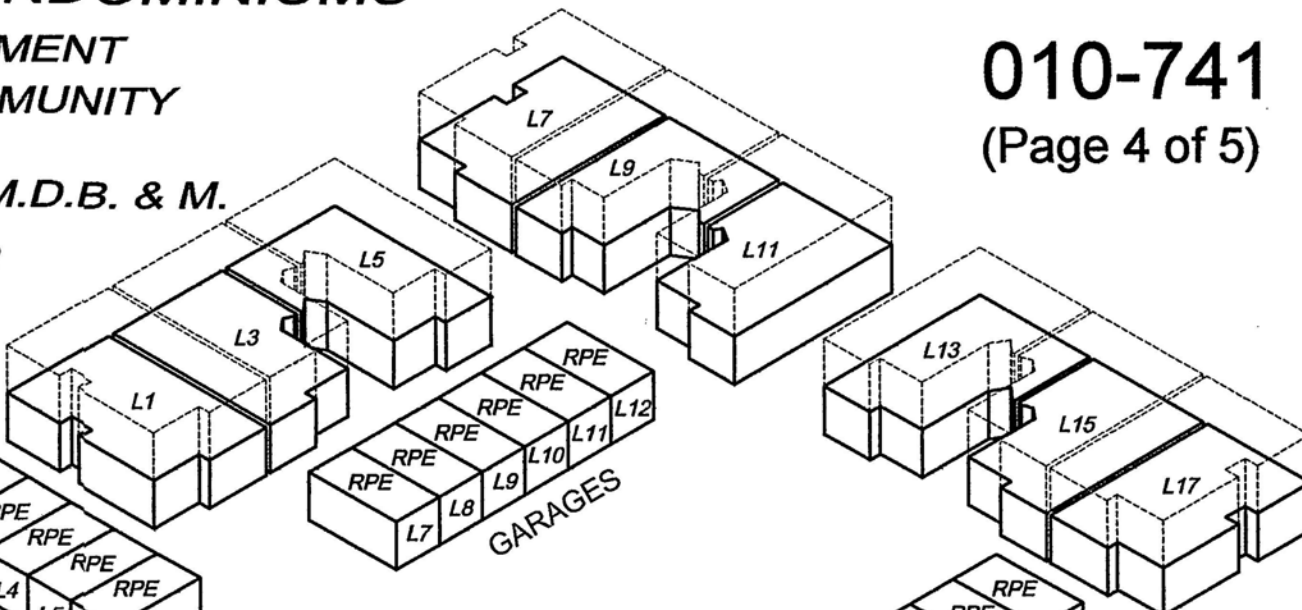
010-741  
(Page 4 of 5)

See  
W Wendover  
Map 010-740  
(Pg. 2 of 2)

TOANA VISTA  
GOLF COURSE

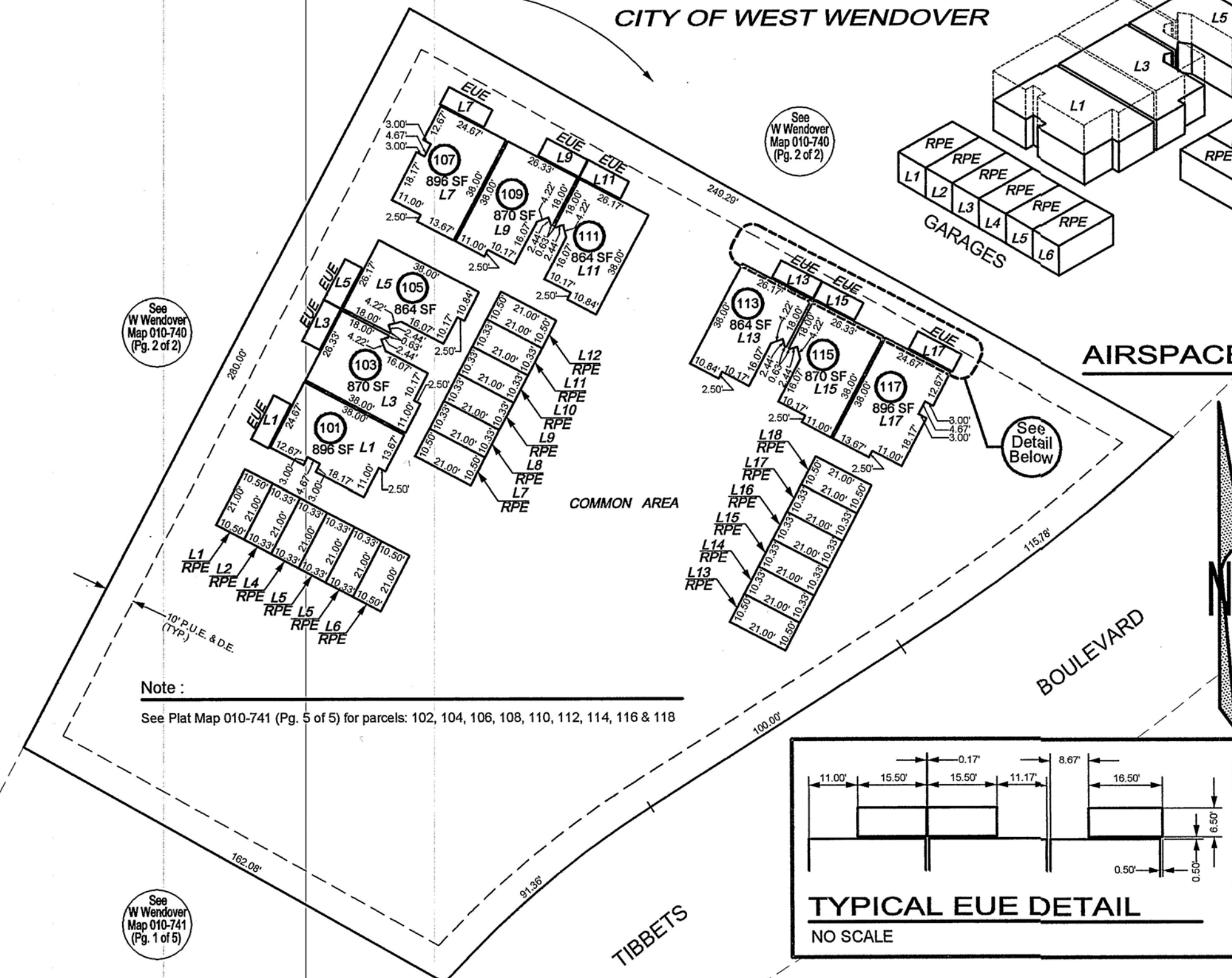
See  
W Wendover  
Map 010-740  
(Pg. 2 of 2)

See  
W Wendover  
Map 010-740  
(Pg. 2 of 2)



**AIRSPACE ISOMETRIC**

NO SCALE



Note :

See Plat Map 010-741 (Pg. 5 of 5) for parcels: 102, 104, 106, 108, 110, 112, 114, 116 & 118

**General Notes :**

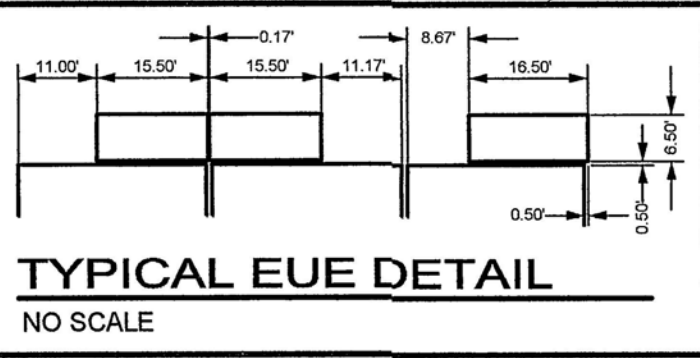
- Total square footage of each parcel (lot,) includes the areas for the R.P.E. (garages,) E.U.E. (balconies,) in addition to the living areas.
- All parcel are airspace condominium units.
- The boundary lines for each parcel are defined as :
  - The interior surfaces of its perimeter walls
  - Bearing walls
  - Floors
  - Ceiling
  - Windows and doors
  - The encompassed airspace
- Basis of bearings:  
The north line of the NE quarter of Sec. 17, T. 33 N., R. 70 E., M.D.B. & M.  
As determined from ties to found monuments taken as N. 89 deg. 04 sec. 50 min. E.

**References :**

- See recorded file # 216394 (6/25/86)
- See recorded file # 478792 (1/15/02)
- This area previously shown on Plat Map 010-741 (Page 1 of 5)

**Abbreviations :**

- E.U.E. Exclusive Use Easement (for referenced lot number)
- D.E. Drainage Easement
- R.P.E. Restricted Parking Easement (for referenced lot number)
- L Lot



**TYPICAL EUE DETAIL**

NO SCALE

**FIRST FLOOR UNITS**

SCALE : 1" = 40'

See  
W Wendover  
Map 010-741  
(Pg. 1 of 5)

**ELKO COUNTY, NEVADA**  
**FOR ASSESSMENT USE ONLY**

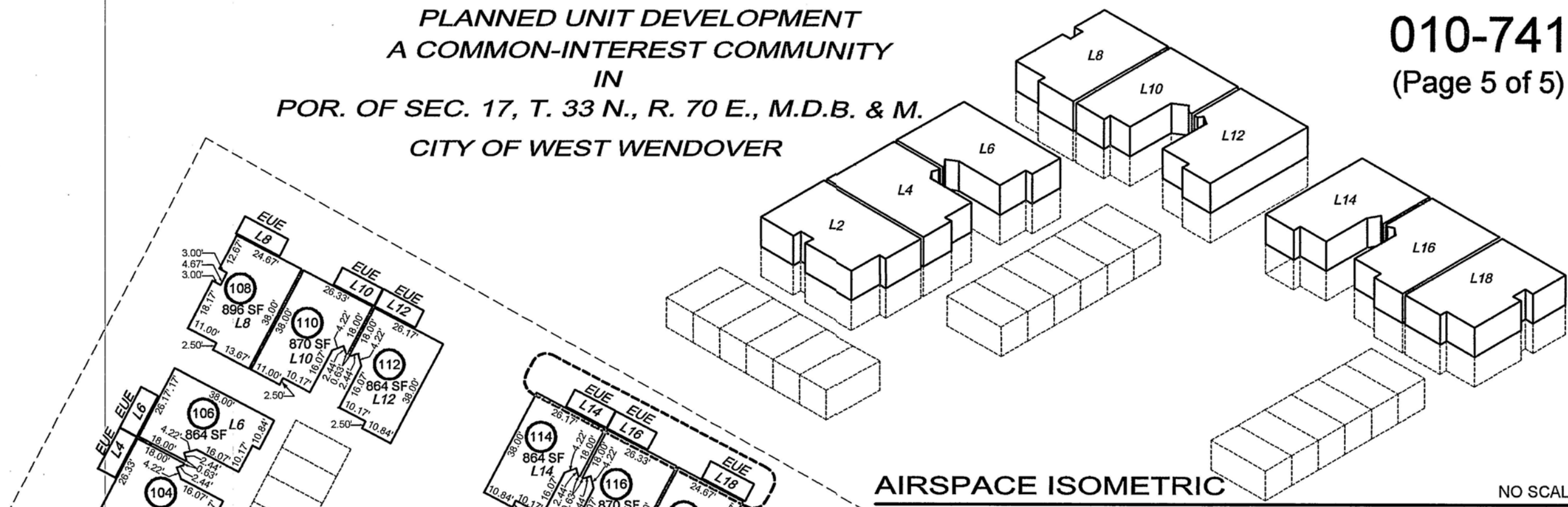
*This map does NOT represent a survey. It is compiled from official records, including surveys and deeds. Recorded documents should be used for detailed legal information. Unless approved by Elko County Assessor, other uses are forbidden.*

# VILLAGE ON THE GREEN CONDOMINIUMS

PLANNED UNIT DEVELOPMENT  
A COMMON-INTEREST COMMUNITY  
IN

POR. OF SEC. 17, T. 33 N., R. 70 E., M.D.B. & M.  
CITY OF WEST WENDOVER

010-741  
(Page 5 of 5)



**AIRSPACE ISOMETRIC**

NO SCALE

**Note :**

See Plat Map 010-741 (Pg. 4 of 5) for parcels: 101, 103, 105, 107, 109, 111, 113, 115 & 117

**General Notes :**

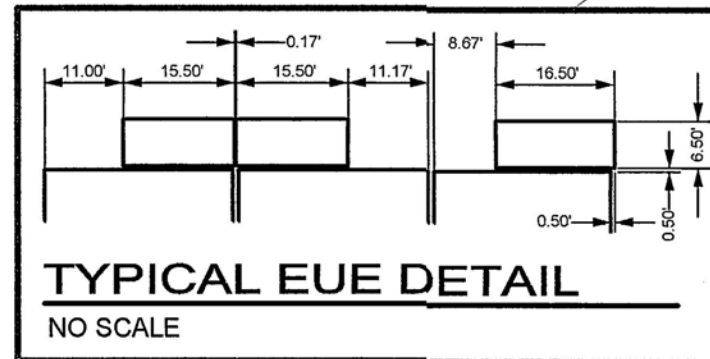
- Total square footage of each parcel (lot,) includes the areas for the R.P.E. (garages,) E.U.E. (balconies,) in addition to the living areas.
- All parcel are airspace condominium units.
- The boundary lines for each parcel are defined as :
  - The interior surfaces of its perimeter walls
  - Bearing walls
  - Floors
  - Ceiling
  - Windows and doors
  - The encompassed airspace
- Basis of bearings:  
The north line of the NE quarter of Sec. 17, T. 33 N., R. 70 E., M.D.B. & M.  
As determined from ties to found monuments taken as N. 89 deg. 04 sec. 50 min. E.

**References :**

- See recorded file # 216394 (6/25/86)
- See recorded file # 478792 (1/15/02)
- This area previously shown on Plat Map 010-741 (Page 1 of 5)

**Abbreviations :**

- E.U.E. Exclusive use easement (for referenced lot number)
- D.E. Drainage easement
- R.P.E. Restricted parking easement (for referenced lot number)
- L Lot



**TYPICAL EUE DETAIL**

NO SCALE

**SECOND FLOOR UNITS**

SCALE : 1" = 40'

**ELKO COUNTY, NEVADA**  
**FOR ASSESSMENT USE ONLY**

*This map does NOT represent a survey. It is compiled from official records, including surveys and deeds. Recorded documents should be used for detailed legal information. Unless approved by Elko County Assessor, other uses are forbidden.*

Revised 03/2003 mac