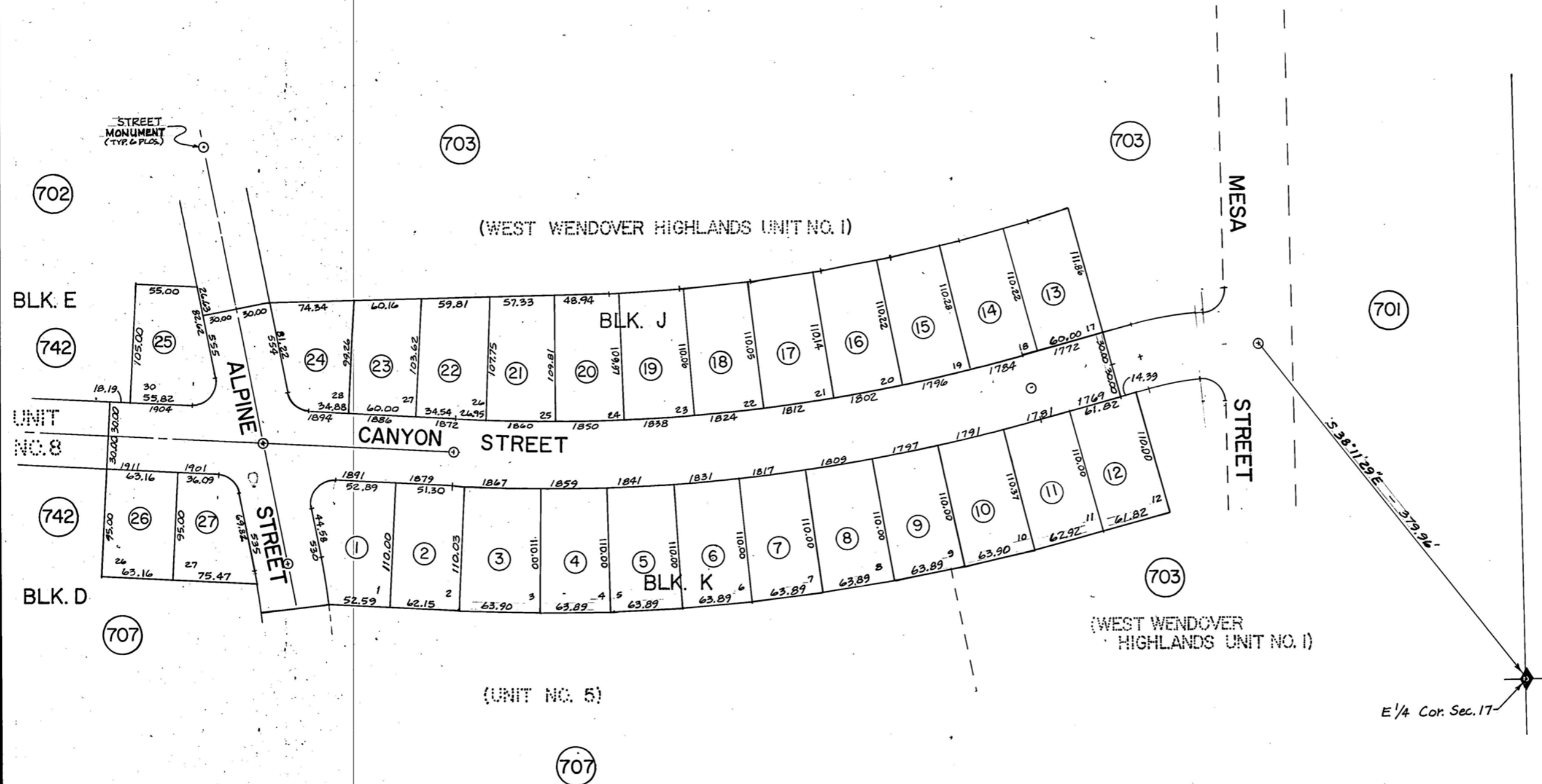


WEST WENDOVER HIGHLANDS
Unit No 3

10-705



ASSESSMENT USE ONLY. DOES NOT REPRESENT A SURVEY. NO LIABILITY FOR ACCURACY IS ASSURED.
Other uses forbidden unless approved by County Assessor.

NE 1/4 SEC. 17, TWP. 33 N., RG. 70 E.

REV. Apr. 7, 1977

REF. NOTE - See Official Sub. Plat with File No 219976

Oct. 10, 1977 - RFL