

114°45'0"W

114°44'30"W

40°16'0"N

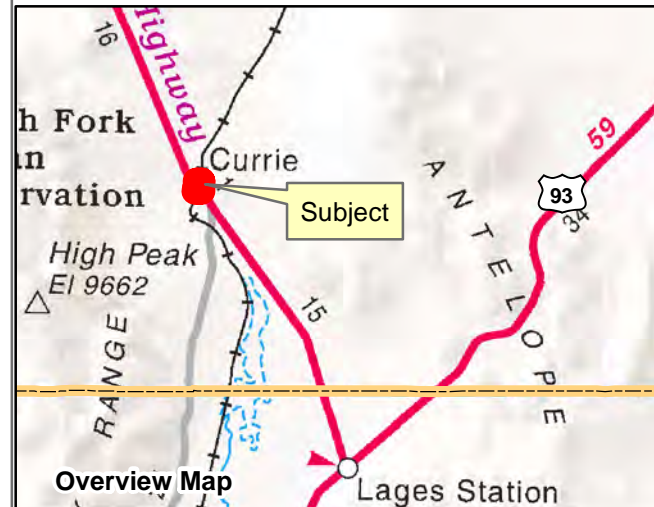
40°16'0"N

114°45'0"W

114°44'30"W

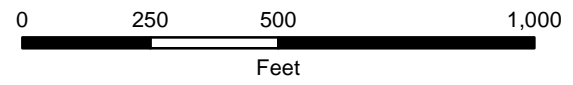
# 009-03B

SPECIAL LANDS  
Township 28N Range 64E  
S½ Section 27 & N½ Section 34  
of the Mount Diablo Meridian, Nevada



### Legend

- Subject Parcel
- Parcel
- Public Land
- Section
- Road

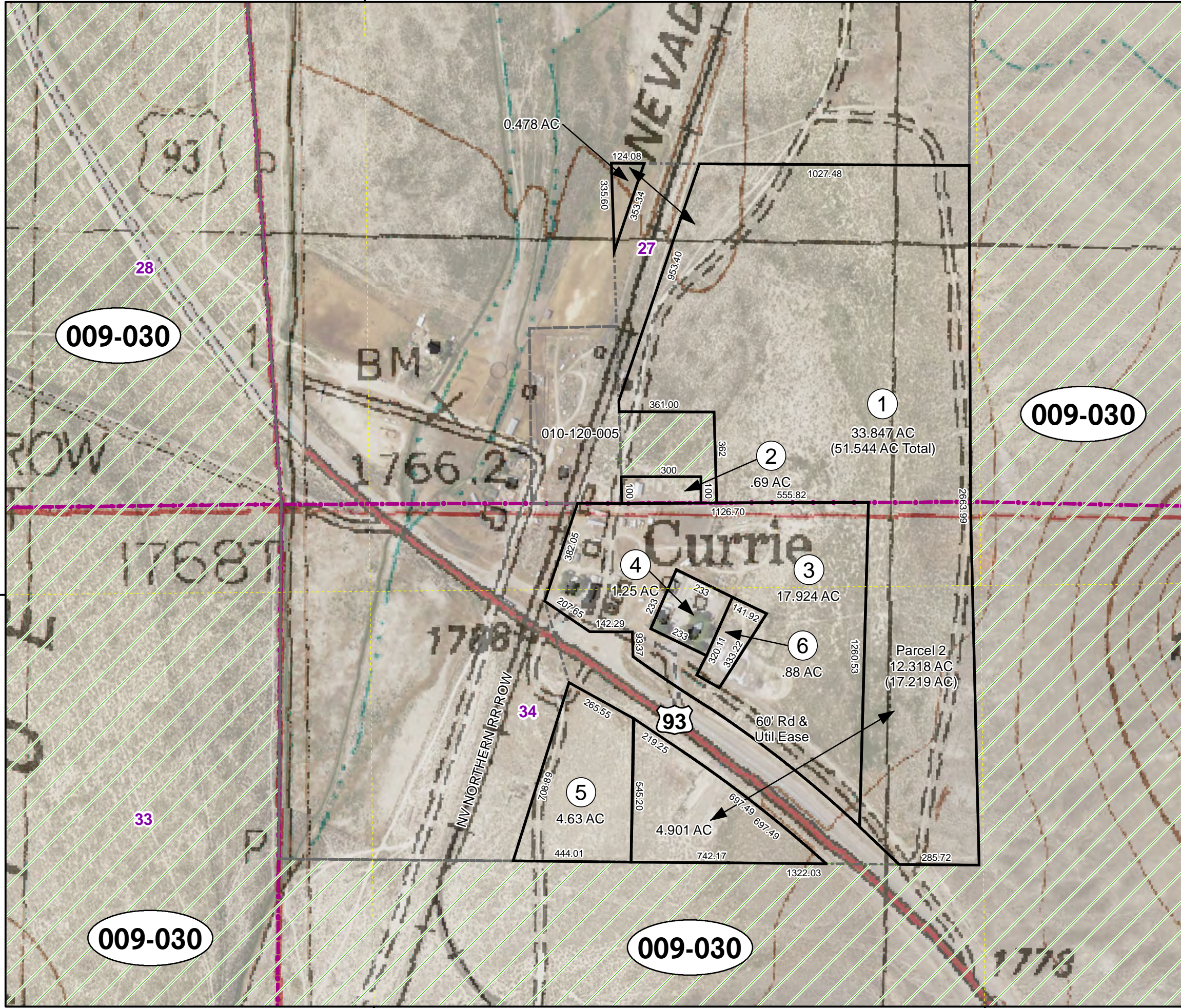


Reference Documents:  
Map # 67267, 777358

This map does NOT represent a survey. It is compiled from official records, including surveys and deeds. Recorded documents should be used for detailed legal information. Unless approved by Elko County Assessor, other uses are forbidden.

**FOR ASSESSMENT USE ONLY**

Background image - 2017 NAIP flyover downloaded from the W. M. Keck Earth Sciences & Mining Research Information Center.  
Product of GIS  
Last Update 11/20/2020 JLS



009-030

009-030

009-030

009-030

0.478 AC

1027.48

33.847 AC  
(51.544 AC Total)

2

.69 AC  
555.82

3

17.924 AC

6

.88 AC

Parcel 2  
12.318 AC  
(17.219 AC)

4

1.25 AC

5

4.63 AC

4.901 AC

009-030

28

27

34

33

93

BM

Currie

NORTHERN RR ROW

010-120-005

1766.2

17687

1768

1778

124.08  
333.60  
353.34

953.40

361.00

300

100

1126.70

382.05

207.65

142.29

933.37

233

233

11.023

333.22

141.92

1260.53

265.55

219.25

708.82

545.20

444.01

742.17

1322.03

285.72

697.49 697.49

60' Rd & Util Ease