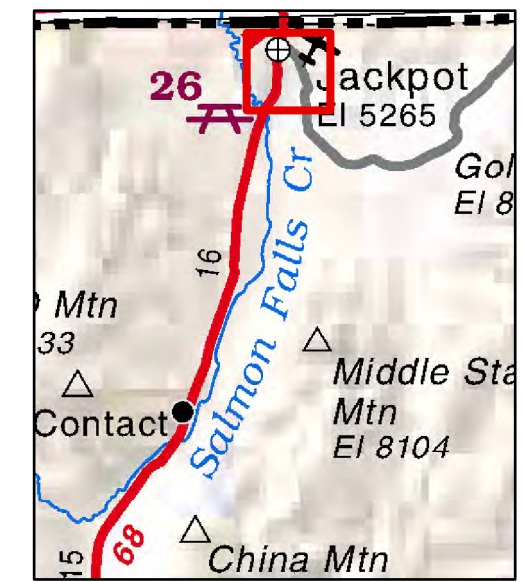


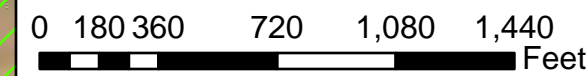
009-008 TOWN OF JACKPOT

Township 47N Range 64E Section 12
of the Mount Diablo Meridian, Nevada



Legend

- Subject Parcel
- Parcel
- Public Land
- Section



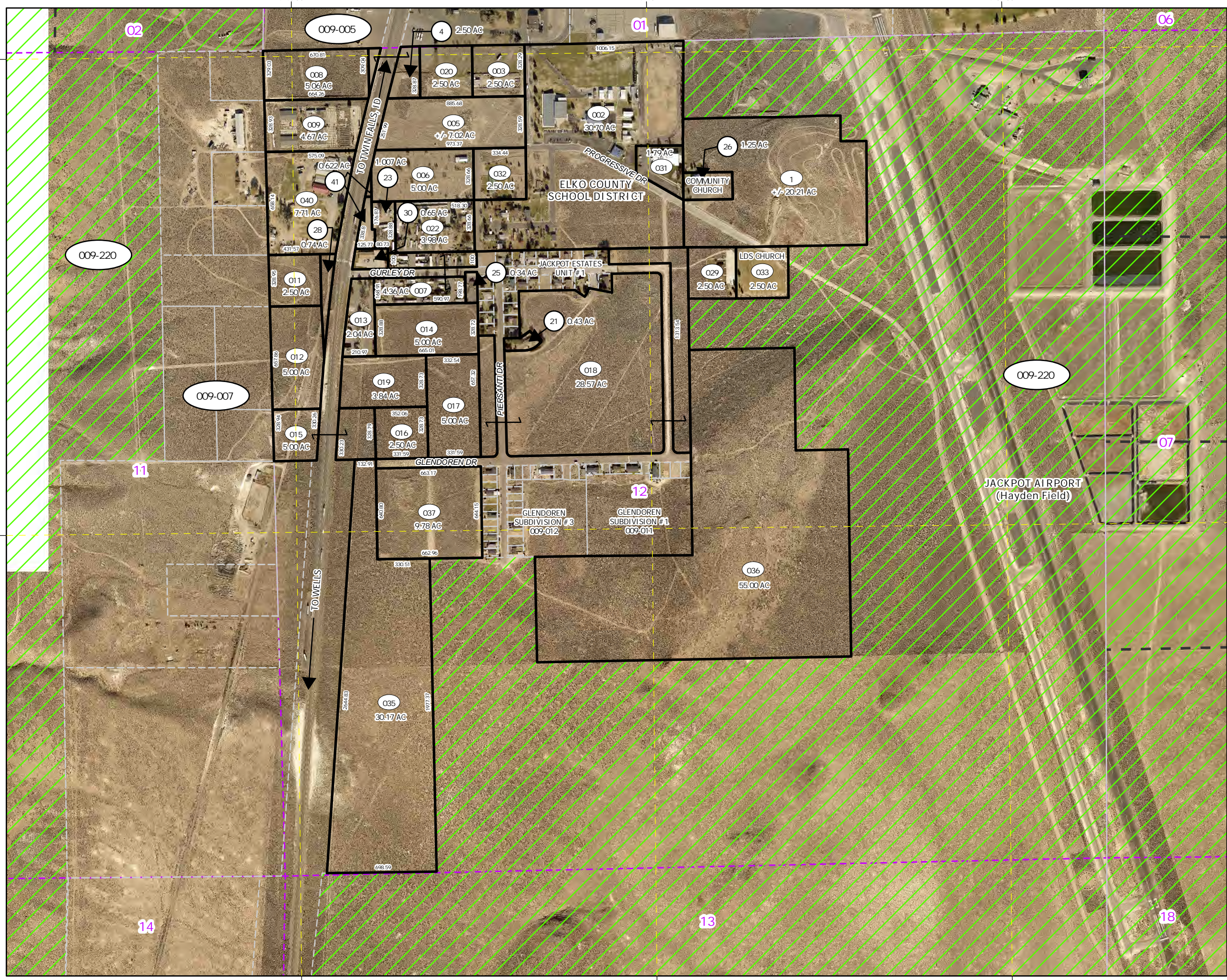
Reference Documents:
Map# 71474, 89998, 290007, 407844,
438222,
446604, 784558, 793322, 795674, 798511,
806116
Deed: Book 308 Page 664

This map does NOT represent a survey.
It is compiled from official records, including
surveys and deeds. Recorded documents
should be used for detailed legal information.
Unless approved by Elko County Assessor, other
uses are forbidden.

FOR ASSESSMENT USE ONLY

Background image - 2020 Pictometry flyover

Product of GIS
Last Update 2/2/2023 APM



41° 59' N
41° 58' 30" N

41° 59' N
41° 58' 30" N

114° 40' 30" W
114° 40' W
114° 39' 30" W
114° 40' 30" W
114° 40' W
114° 39' 30" W

02

01

06

11

12

07

14

13

18

009-220

009-007

009-220

009-005

4 2.50 AC

008 5.06 AC

009 4.67 AC

040 7.71 AC

011 2.50 AC

012 5.00 AC

015 5.00 AC

016 2.50 AC

019 3.84 AC

013 2.04 AC

014 5.00 AC

017 5.00 AC

018 28.57 AC

020 2.50 AC

022 3.98 AC

023 5.00 AC

024 4.36 AC

025 0.34 AC

026 1.25 AC

027 1.79 AC

028 0.74 AC

029 2.50 AC

030 0.65 AC

031 1.79 AC

032 2.50 AC

033 2.50 AC

034 0.34 AC

035 30.17 AC

036 55.00 AC

037 9.78 AC

038 7.02 AC

039 3.70 AC

040 1.007 AC

041 0.622 AC

042 0.74 AC

043 0.74 AC

044 0.74 AC

045 0.74 AC

046 0.74 AC

047 0.74 AC

048 0.74 AC

049 0.74 AC

050 0.74 AC

051 0.74 AC

052 0.74 AC

053 0.74 AC

054 0.74 AC

055 0.74 AC

056 0.74 AC

057 0.74 AC

058 0.74 AC

059 0.74 AC

060 0.74 AC

061 0.74 AC

062 0.74 AC

063 0.74 AC

064 0.74 AC

065 0.74 AC

066 0.74 AC

067 0.74 AC

068 0.74 AC

069 0.74 AC

070 0.74 AC

071 0.74 AC

072 0.74 AC

073 0.74 AC

074 0.74 AC

075 0.74 AC

076 0.74 AC

077 0.74 AC

078 0.74 AC

079 0.74 AC

080 0.74 AC

081 0.74 AC

082 0.74 AC

083 0.74 AC

084 0.74 AC

085 0.74 AC

086 0.74 AC

087 0.74 AC

088 0.74 AC

089 0.74 AC

090 0.74 AC

091 0.74 AC

092 0.74 AC

093 0.74 AC

094 0.74 AC

095 0.74 AC

096 0.74 AC

097 0.74 AC

098 0.74 AC

099 0.74 AC

100 0.74 AC

101 0.74 AC

102 0.74 AC

103 0.74 AC

104 0.74 AC

105 0.74 AC

106 0.74 AC

107 0.74 AC

108 0.74 AC

109 0.74 AC

110 0.74 AC

111 0.74 AC

112 0.74 AC

113 0.74 AC

114 0.74 AC

115 0.74 AC

116 0.74 AC

117 0.74 AC

118 0.74 AC

119 0.74 AC

120 0.74 AC

121 0.74 AC

122 0.74 AC

123 0.74 AC

124 0.74 AC

125 0.74 AC

126 0.74 AC

127 0.74 AC

128 0.74 AC

129 0.74 AC

130 0.74 AC

131 0.74 AC

132 0.74 AC

133 0.74 AC

134 0.74 AC

135 0.74 AC

136 0.74 AC

137 0.74 AC

138 0.74 AC

139 0.74 AC

140 0.74 AC

141 0.74 AC

142 0.74 AC

143 0.74 AC

144 0.74 AC

145 0.74 AC

146 0.74 AC

147 0.74 AC

148 0.74 AC

149 0.74 AC

150 0.74 AC

151 0.74 AC

152 0.74 AC

153 0.74 AC

154 0.74 AC

155 0.74 AC

156 0.74 AC

157 0.74 AC

158 0.74 AC

159 0.74 AC

160 0.74 AC

161 0.74 AC

162 0.74 AC

163 0.74 AC

164 0.74 AC

165 0.74 AC

166 0.74 AC

167 0.74 AC

168 0.74 AC

169 0.74 AC

170 0.74 AC

171 0.74 AC

172 0.74 AC

173 0.74 AC

174 0.74 AC

175 0.74 AC