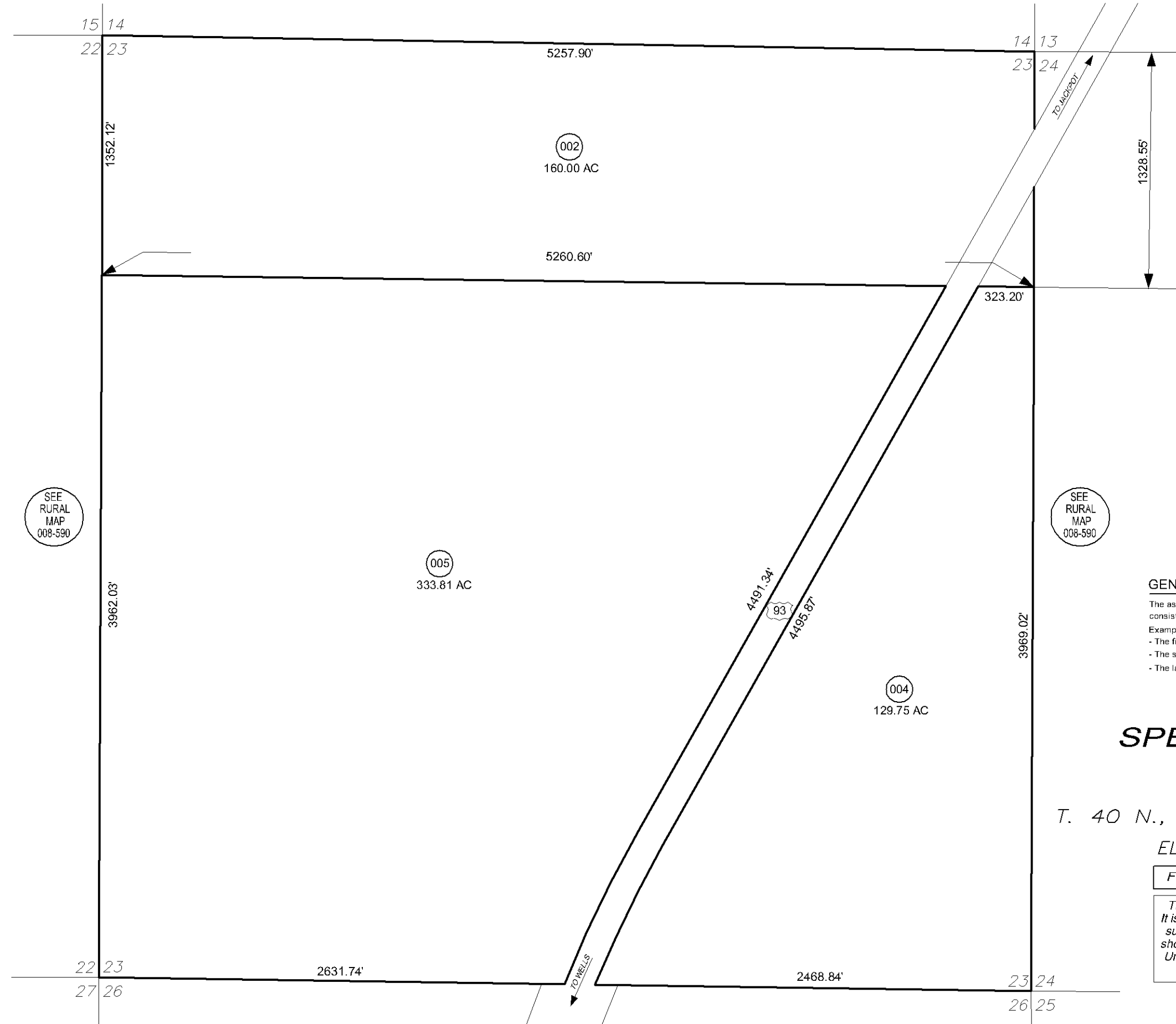


008-59B



SEE RURAL MAP 008-590

SEE RURAL MAP 008-590



SCALE : 1" = 600'

GENERAL NOTE :

The assessor's parcel number (APN) is a nine-digit identifier consisting of three elements:

Example: 008-59B-001

- The first three digits, 008, represent the assessor's map book #.
- The second three digits, 59B, represent the page/block #.
- The last three digits, 001, represent the parcel itself.

SPECIAL LANDS
 IN
 SECTION 23,
 T. 40 N., R. 63 E., M.D.B. & M.
 ELKO COUNTY, NEVADA

FOR ASSESSMENT USE ONLY

This map does NOT represent a survey. It is compiled from official records, including surveys and deeds. Recorded documents should be used for detailed legal information. Unless approved by Elko County Assessor, other uses are forbidden.

Revised 04/2005 EM