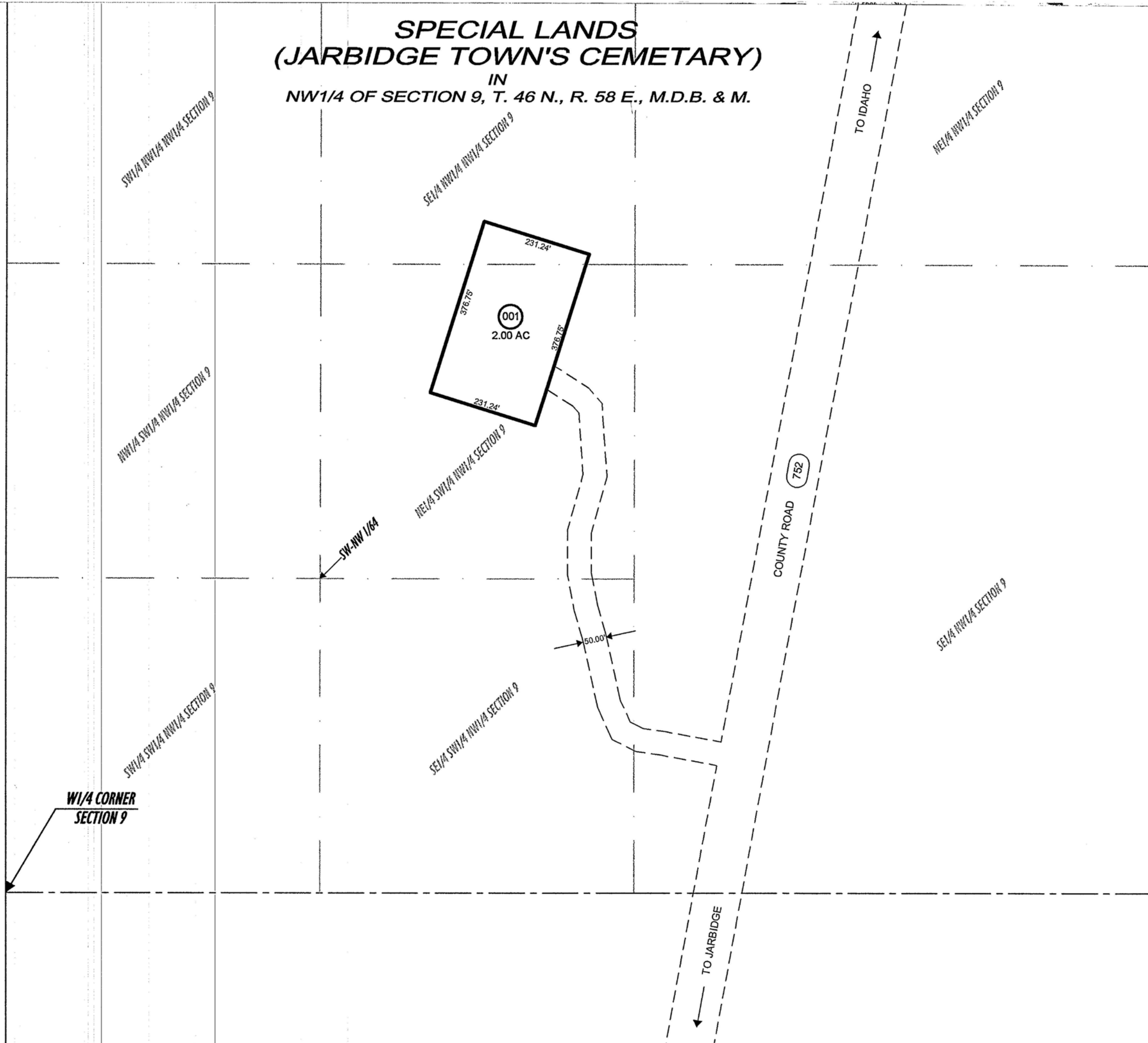


RECORDER BY NUMBER 075AR

**SPECIAL LANDS
(JARBIDGE TOWN'S CEMETARY)**
IN
NW1/4 OF SECTION 9, T. 46 N., R. 58 E., M.D.B. & M.

007-21A



ELKO COUNTY, NEVADA
FOR ASSESSMENT USE ONLY

This map does NOT represent a survey. It is compiled from official records, including surveys and deeds. Recorded documents should be used for detailed legal information. Unless approved by Elko County Assessor, other uses are forbidden.

Revised 11/2001 mac