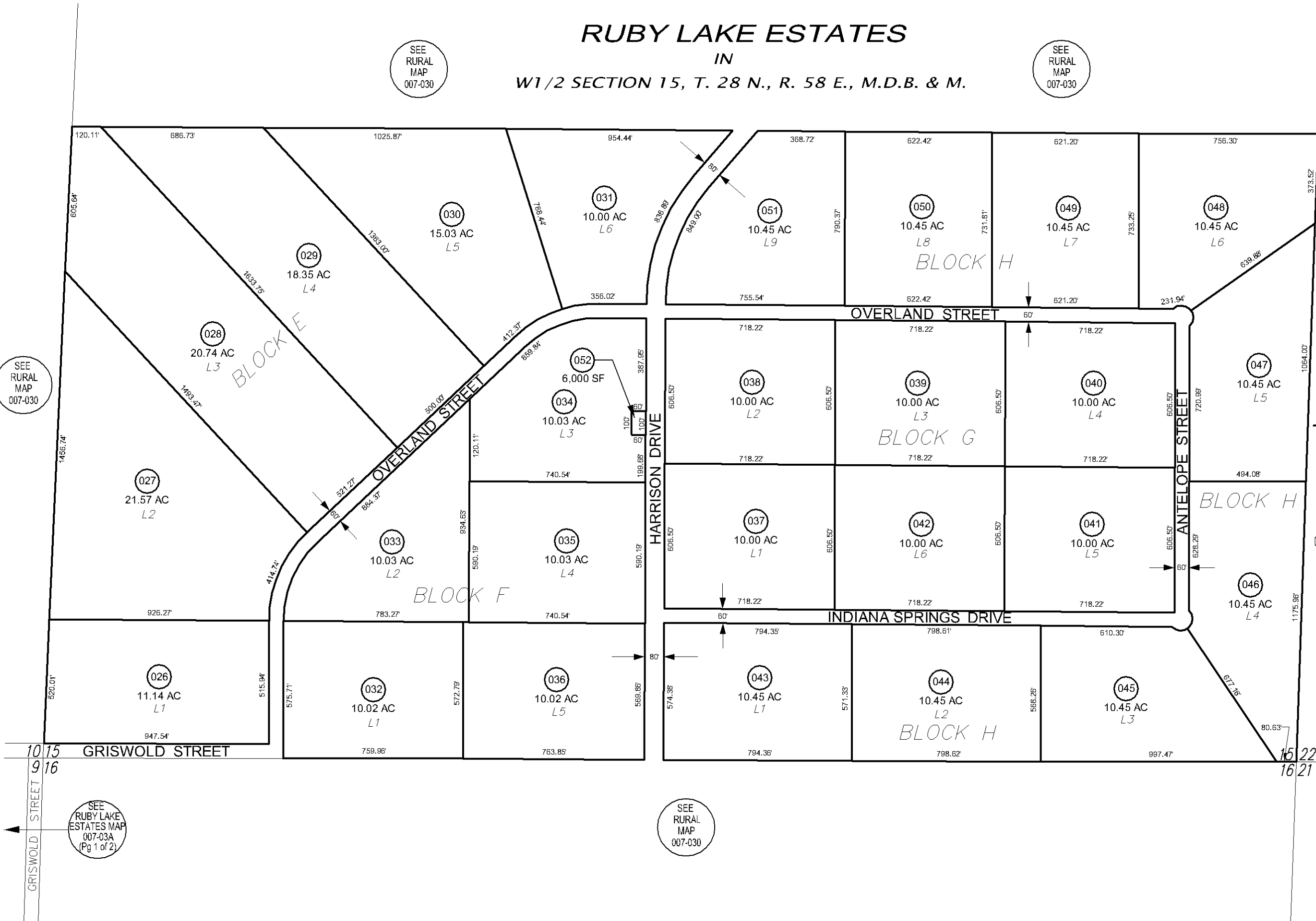
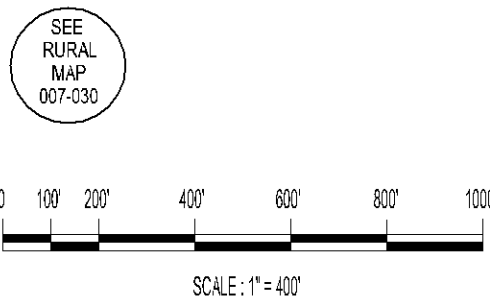


**RUBY LAKE ESTATES**  
 IN  
 W1/2 SECTION 15, T. 28 N., R. 58 E., M.D.B. & M.

**007-03A**  
 (Pg 2 of 2)



1/4  
CORNER



**GENERAL NOTE :**  
 The assessor's parcel number (APN) is a nine-digit identifier consisting of three elements:  
 Example: 007-03A-046  
 - The first three digits, 007, represent the assessor's map book #.  
 - The second three digits, 03A, represent the page/block #.  
 - The last three digits, 046, represent the parcel itself.

**ELKO COUNTY, NEVADA**

**FOR ASSESSMENT USE ONLY**

*This map does NOT represent a survey. It is compiled from official records, including surveys and deeds. Recorded documents should be used for detailed legal information. Unless approved by Elko County Assessor, other uses are forbidden.*

Revised 04/2005 EM