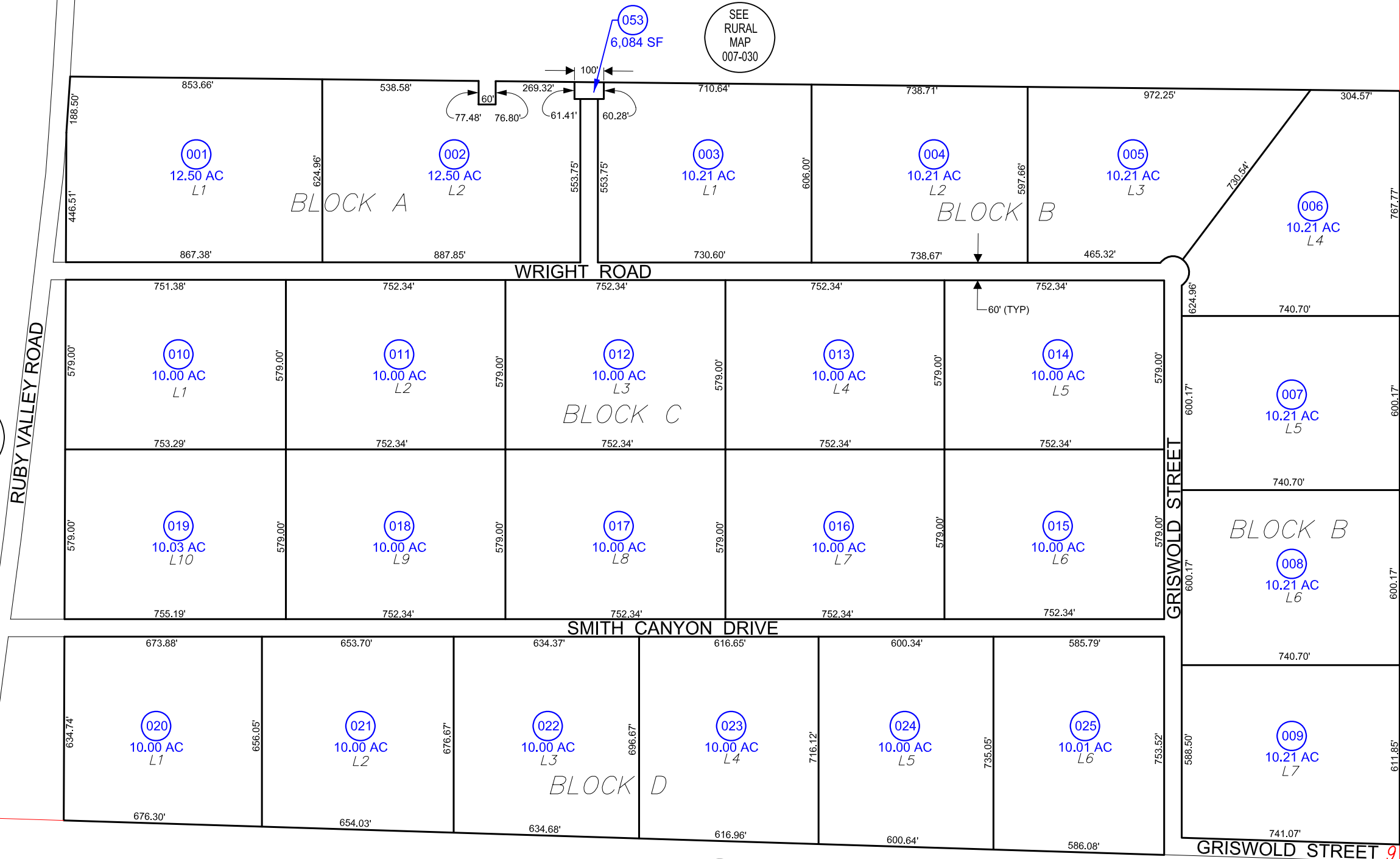


# RUBY LAKE ESTATES

IN

S1/2 OF SECTION 9, & W1/2 SECTION 15, T. 28 N., R. 58 E., M.D.B. & M.

007-03A  
(Pg 1 of 2)



SEE RURAL MAP 007-030

E1/4 CORNER



SCALE: 1" = 400'

SEE RURAL MAP 007-030

### GENERAL NOTE :

The assessor's parcel number (APN) is a nine-digit identifier consisting of three elements:  
Example: 007-03A-008  
- The first three digits, 007, represent the assessor's map book #.  
- The second three digits, 03A, represent the page/block #.  
- The last three digits, 008, represent the parcel itself.

### ELKO COUNTY, NEVADA

#### FOR ASSESSMENT USE ONLY

This map does NOT represent a survey. It is compiled from official records, including surveys and deeds. Recorded documents should be used for detailed legal information. Unless approved by Elko County Assessor, other uses are forbidden.

Revised 10/2006 JLS

SEE RURAL MAP 007-030

SEE RURAL MAP 007-030

SEE RUBY LAKE ESTATES MAP 007-03A (Pg 2 of 2)

910  
1615