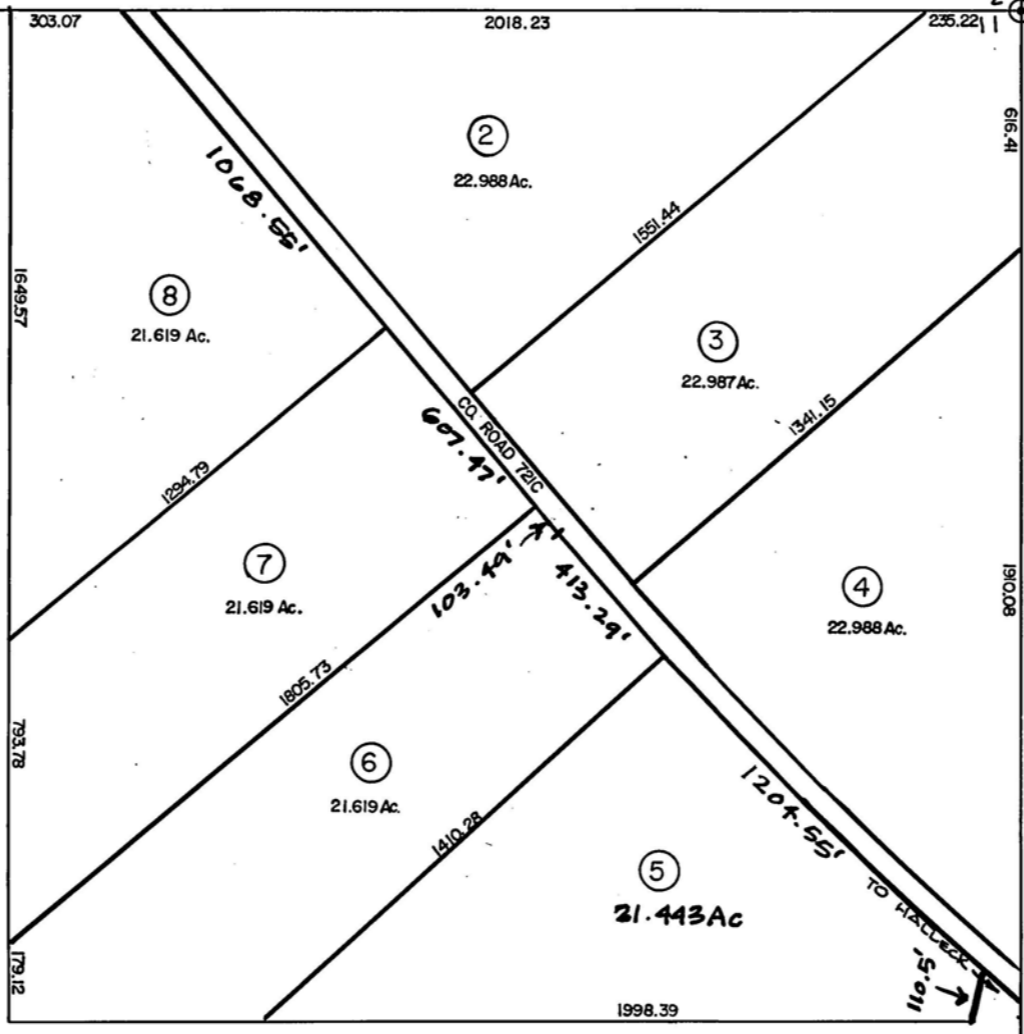


SPECIAL LANDS

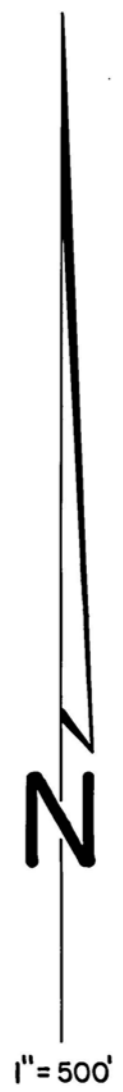
6-54E

3 2
10 11

2 1
12 12



SEE
RURAL
MAPS



10 11
15 14

11 12
14 13

S.P.R.R.

W.P.R.R.



SEC. 11; TWP. 35N; RG. 57E

Revised 1/2001 mac

ST 25/15 P&S 10/2007