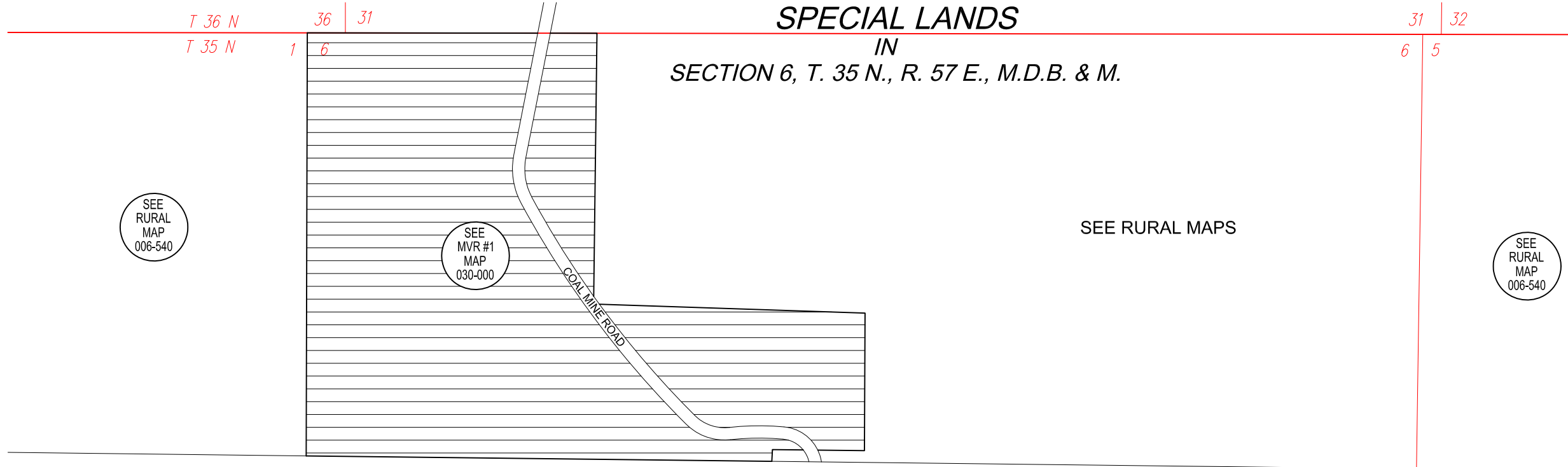
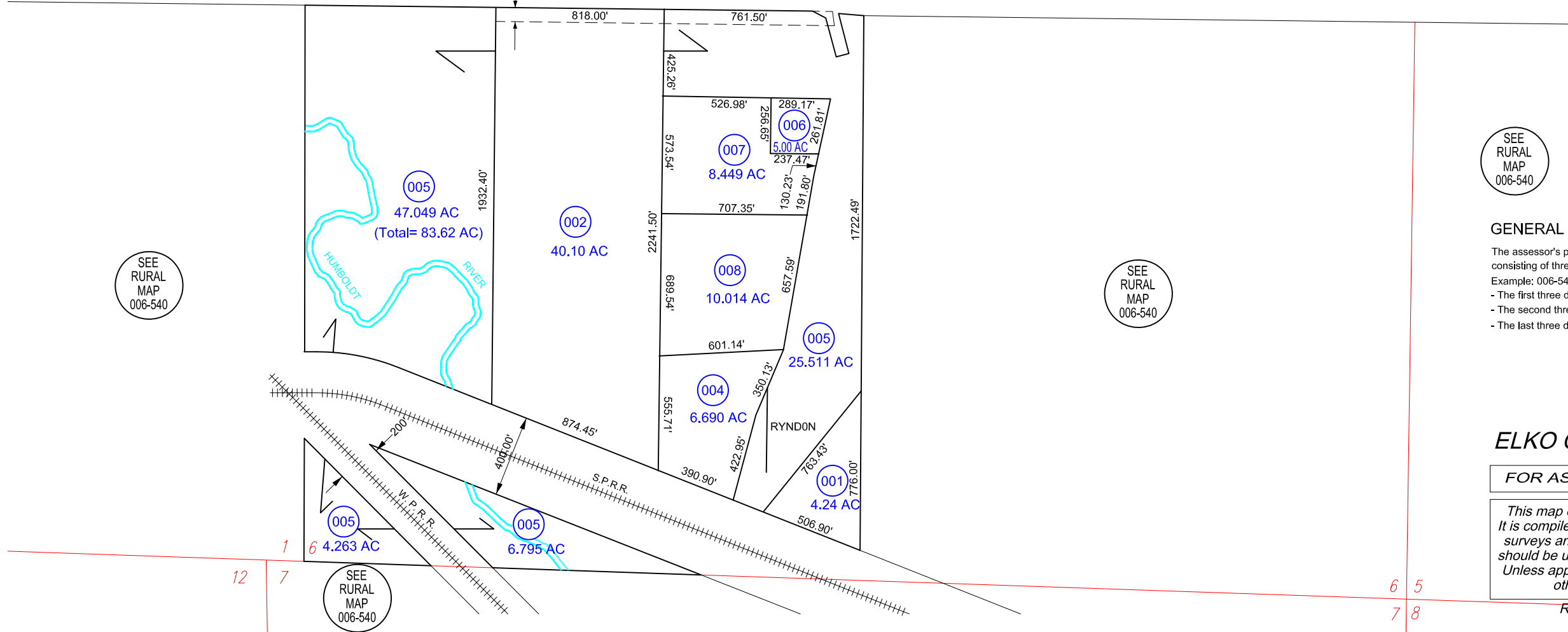


SPECIAL LANDS
IN
SECTION 6, T. 35 N., R. 57 E., M.D.B. & M.

006-54D



SCALE : 1" = 600'



Reference Documents:
 ROS # 564455
 ROS/BLA # 679690

SEE RURAL MAP 006-540

GENERAL NOTE :

The assessor's parcel number (APN) is a nine-digit identifier consisting of three elements:
 Example: 006-54D-005
 - The first three digits, 006, represent the assessor's map book #.
 - The second three digits, 54D, represent the page/block #.
 - The last three digits, 005, represent the parcel itself.

ELKO COUNTY, NEVADA

FOR ASSESSMENT USE ONLY

This map does NOT represent a survey. It is compiled from official records, including surveys and deeds. Recorded documents should be used for detailed legal information. Unless approved by Elko County Assessor, other uses are forbidden.

Revised 10/23/2013 JLS