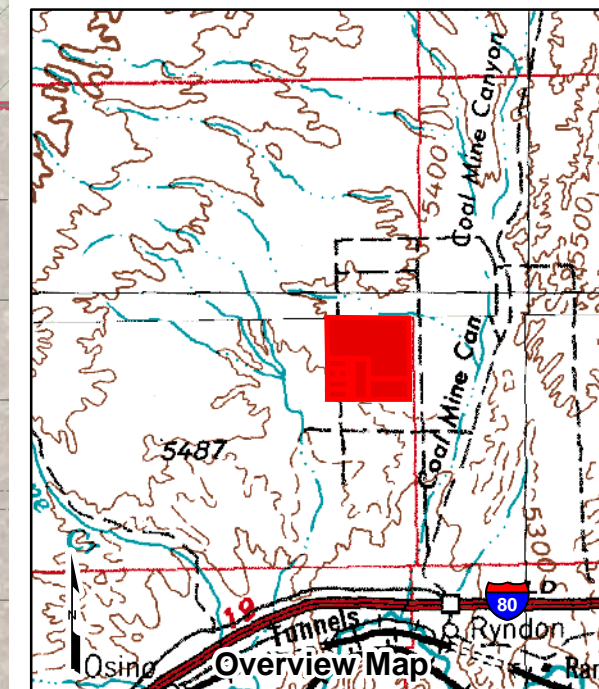






006-33E

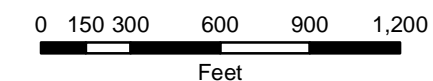
Section 24
T36N R56E



Legend

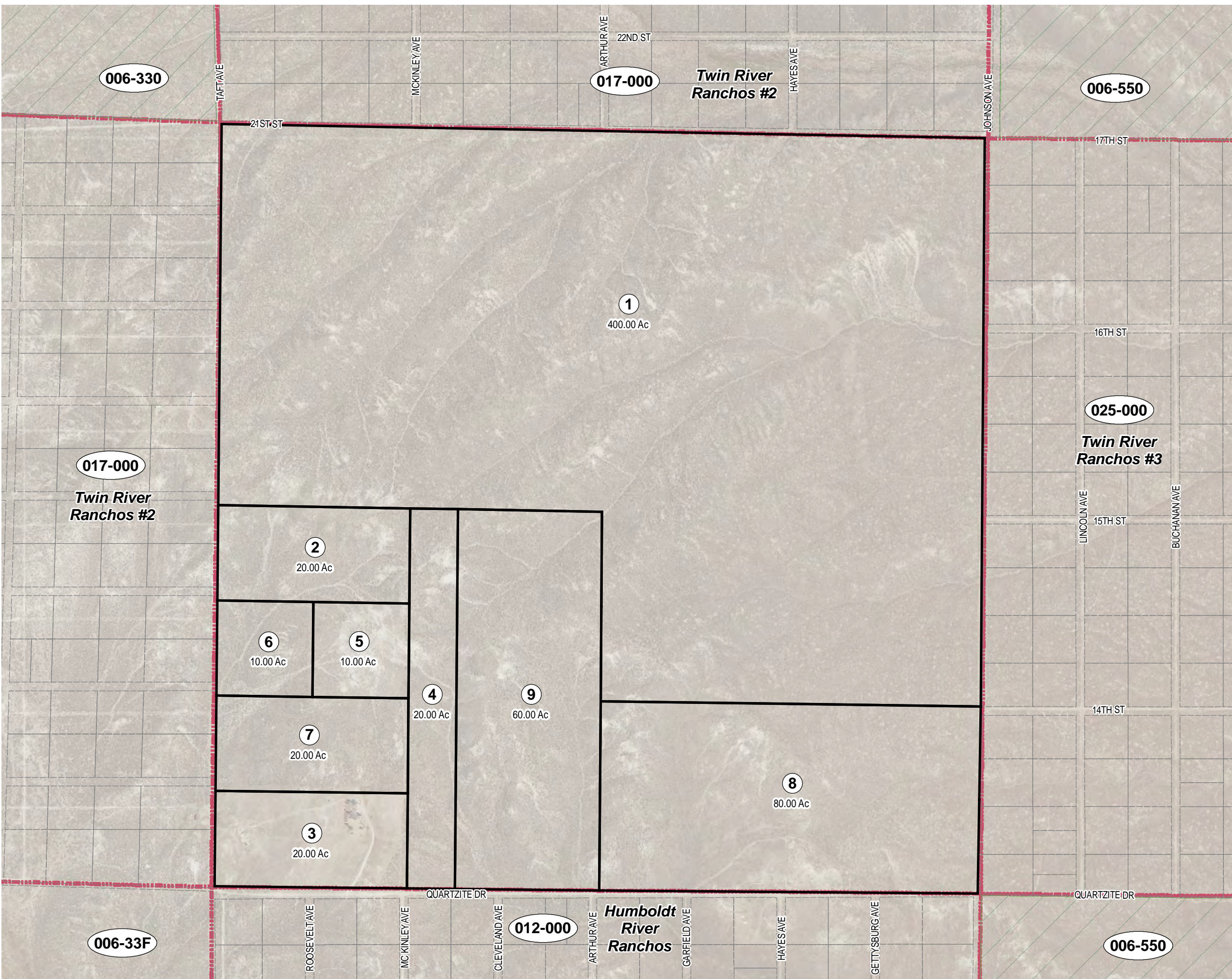
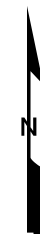
-  Subject Parcel
-  Parcel
-  Public Land
-  Section Line

Reference Documents:
Map



For assessment use only, does not represent a survey, no liability for accuracy is assured. Other uses forbidden unless approved by Elko County Assessor.

Raster Image - 2017 NAIP Flyover
Last Update: 09/25/2018



006-330

017-000

Twin River Ranchos #2

006-550

1
400.00 Ac

025-000

Twin River Ranchos #3

017-000

Twin River Ranchos #2

2
20.00 Ac

6
10.00 Ac

5
10.00 Ac

4
20.00 Ac

9
60.00 Ac

7
20.00 Ac

8
80.00 Ac

3
20.00 Ac

012-000

Humboldt River Ranchos

006-550

006-33F