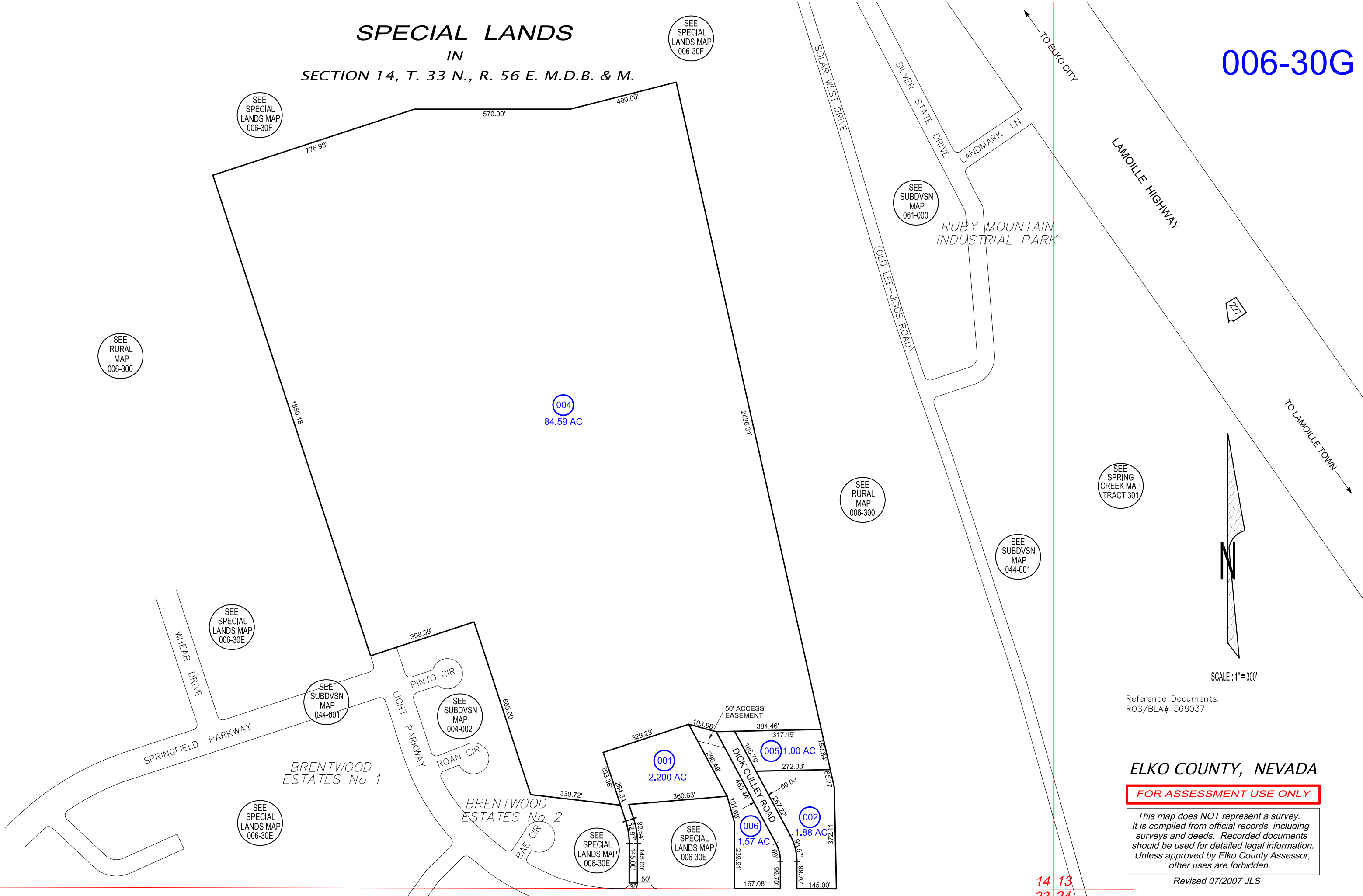


SPECIAL LANDS
 IN
 SECTION 14, T. 33 N., R. 56 E. M.D.B. & M.

006-30G



SCALE: 1" = 300'

Reference Documents:
 ROS/BLA# 568037

ELKO COUNTY, NEVADA

FOR ASSESSMENT USE ONLY

This map does NOT represent a survey. It is compiled from official records, including surveys and deeds. Recorded documents should be used for detailed legal information. Unless approved by Elko County Assessor, other uses are forbidden.

Revised 07/2007 JLS

14 13
 23 24