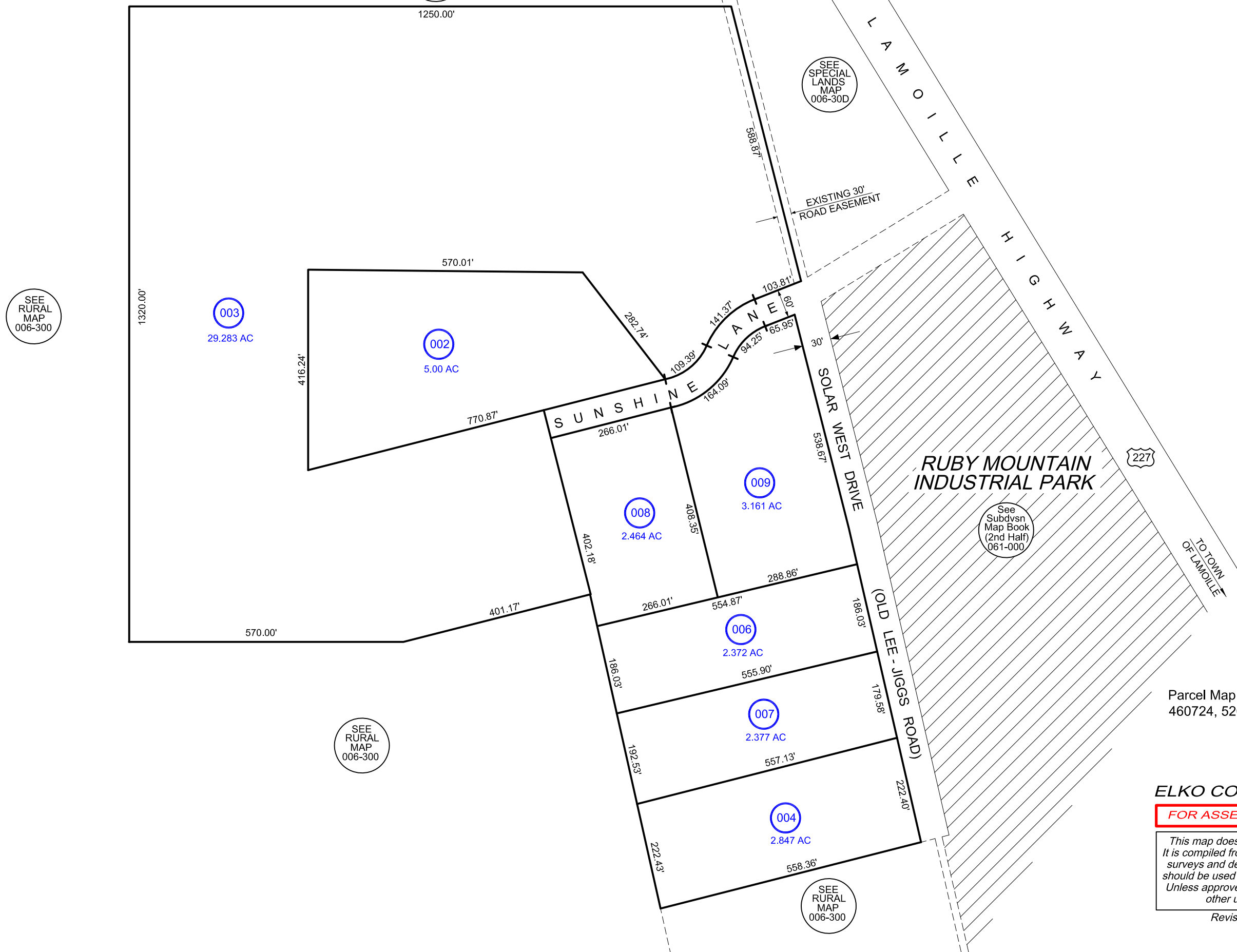


SPECIAL LANDS

PORTION OF SECTION 14, T.33 N., R.56 E. M. D. B. & M.

006-30F



Parcel Map #'s:
460724, 520483, 703007

ELKO COUNTY, NEVADA

FOR ASSESSMENT USE ONLY

This map does NOT represent a survey. It is compiled from official records, including surveys and deeds. Recorded documents should be used for detailed legal information. Unless approved by Elko County Assessor, other uses are forbidden.

Revised 09/28/2015 JLS