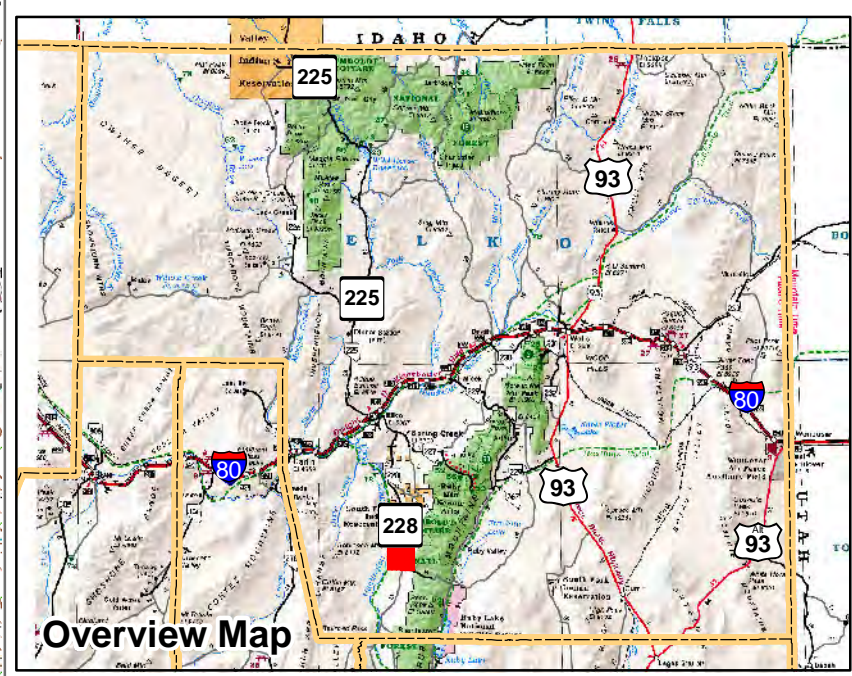


006-260
Township 29N Range 56E
of the Mount Diablo Meridian, Nevada



- Legend**
- Subject Parcel
 - Parcel
 - Public Land
 - Lot
 - Township/Range
 - Section
 - County Line



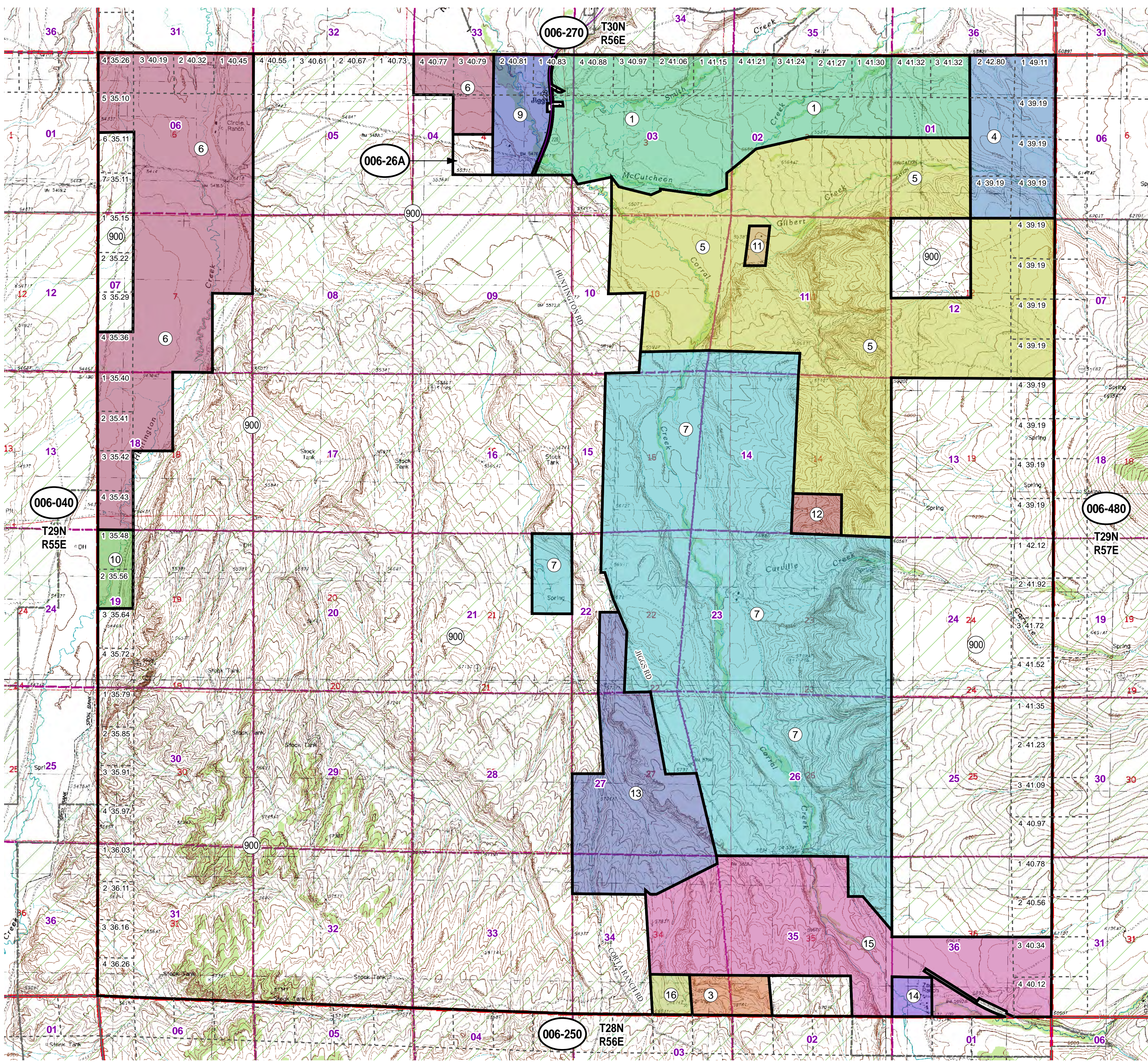
This map does NOT represent a survey. It is compiled from official records, including surveys and deeds. Recorded documents should be used for detailed legal information. Unless approved by Elko County Assessor, other uses are forbidden.

Reference Documents:

FOR ASSESSMENT USE ONLY

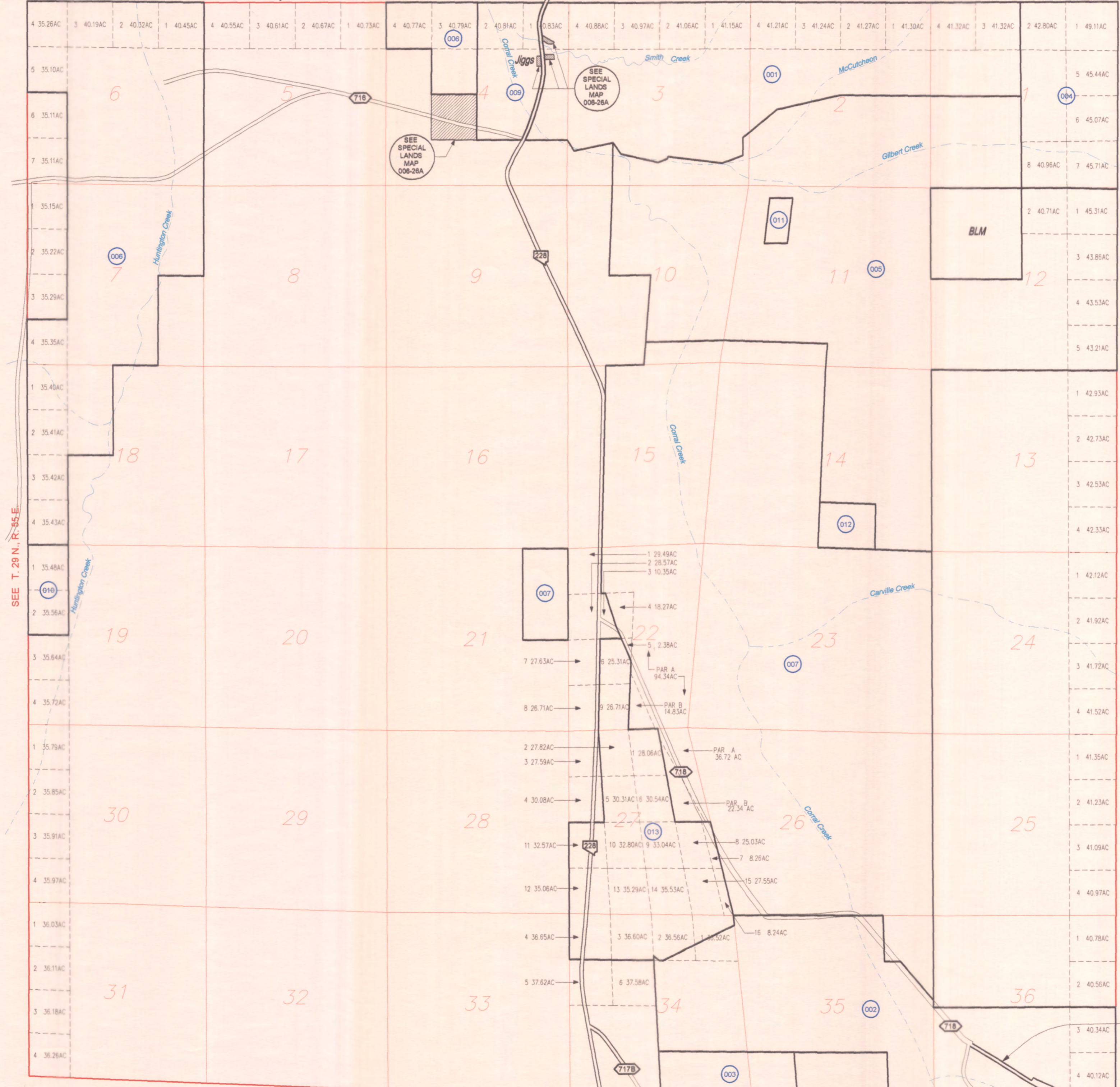
Background DRG was downloaded from the W. M. Keck Earth Sciences & Mining Research Information Center.

Product of GIS
 Last Update 06/19/2014 JLS



TOWNSHIP 29 NORTH, RANGE 56 EAST OF THE MOUNT DIABLO MERIDIAN, NEVADA

006-260



LEGEND

- STATE ROUTE
- COUNTY ROAD
- INTERSTATE HIGHWAY
- U.S. ROUTE
- RIVER
- TRACT LINE
- MINERAL SURVEY
- HOMESTEAD LINE
- RAILROAD
- CREEK
- GOVERNMENT LOT LINE
- PROPERTY LINE
- SECTION LINE
- MAIN ROAD
- SECONDARY ROAD
- LAND HOOK
- 1 00.00AC GOVERNMENT LOT # & ACREAGE
- 000 PARCEL NUMBER
- 1 SECTION NUMBER



ELKO COUNTY, NEVADA
FOR ASSESSMENT USE ONLY

This map does NOT represent a survey. It is compiled from official records, including surveys and deeds. Recorded documents should be used for detailed legal information. Unless approved by Elko County Assessor, other uses are forbidden.

Revised 03/2006 JLS

Latitude: 40° 19' N
 Longitude: 116° 36' W

SEE T. 29 N., R. 55 E.

SEE T. 29 N., R. 57 E.

SEE T. 28 N., R. 56 E.