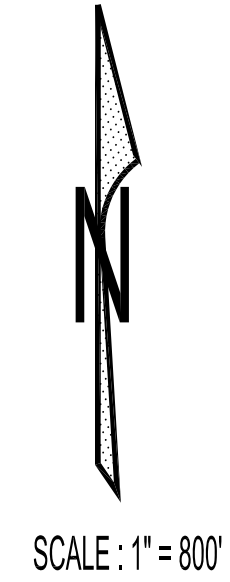
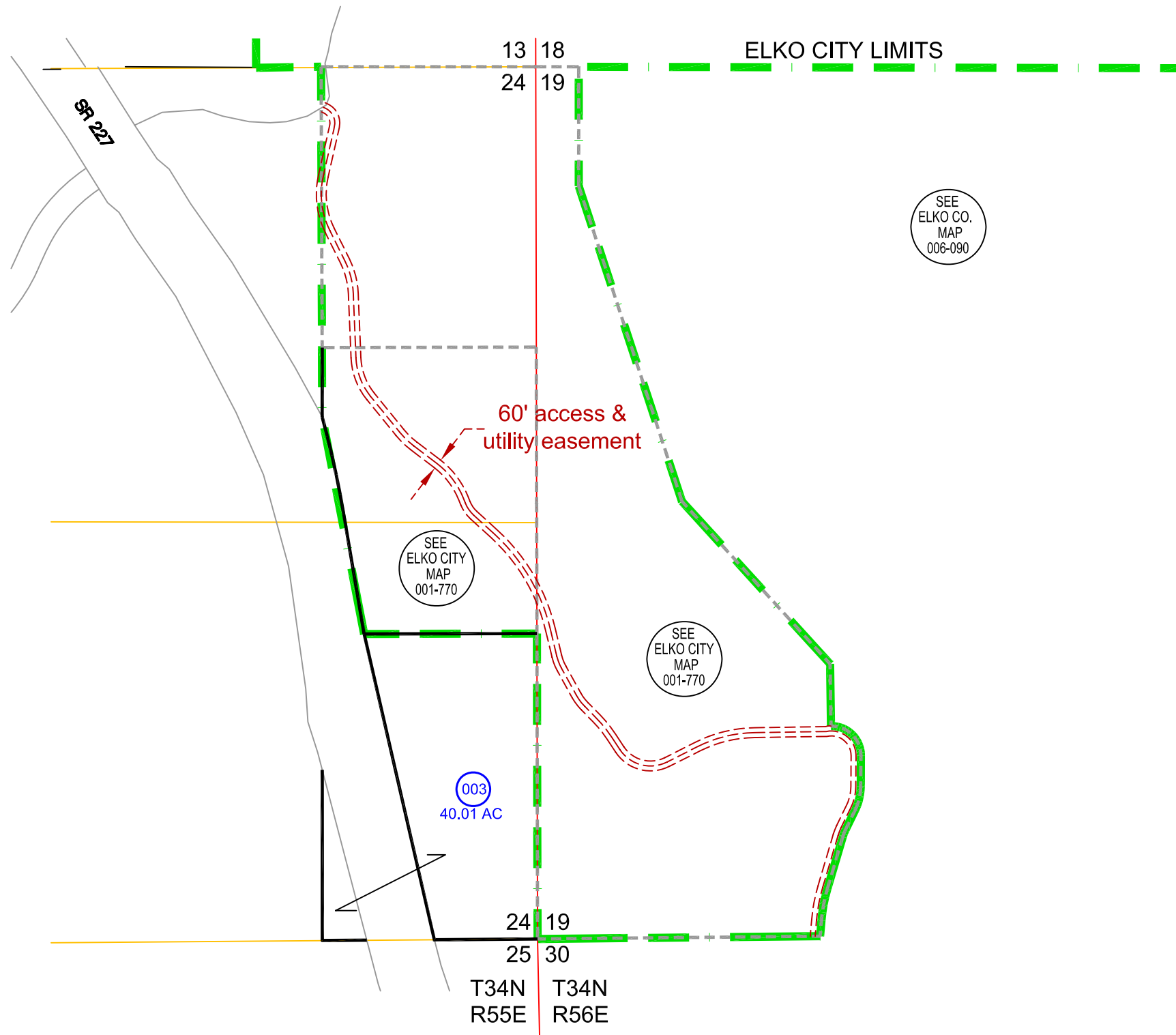


SPECIAL LANDS
IN
SECTION 24, T. 34 N., R. 55 E., M.D.B. & M.
SECTION 19, T. 34 N., R. 56 E., M.D.B. & M.



GENERAL NOTE :
The assessor's parcel number (APN) is a nine-digit identifier consisting of three elements:
Example: 001-560-001
- The first three digits, 001, represent the assessor's map book #.
- The second three digits, 560, represent the page/block #.
- The last three digits, 001, represent the parcel itself.

Reference Documents:
Annexation Map #548179

ELKO COUNTY, NEVADA

FOR ASSESSMENT USE ONLY

This map does NOT represent a survey. It is compiled from official records, including surveys and deeds. Recorded documents should be used for detailed legal information. Unless approved by Elko County Assessor, other uses are forbidden.