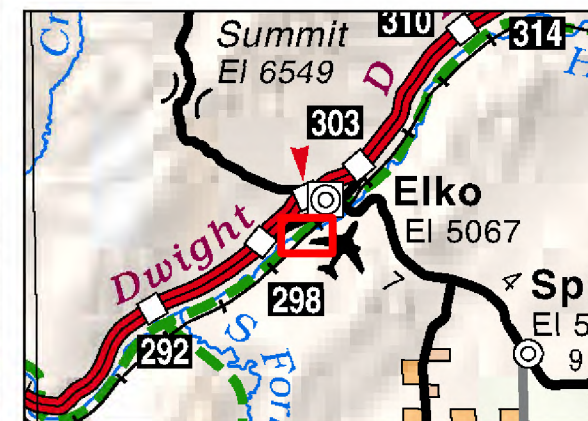


006-09U

Section 22 T34N R55E
of the Mount Diablo Meridian, Nevada



Legend

- Subject Parcel
- Parcel
- Road
- CityLimit
- Section



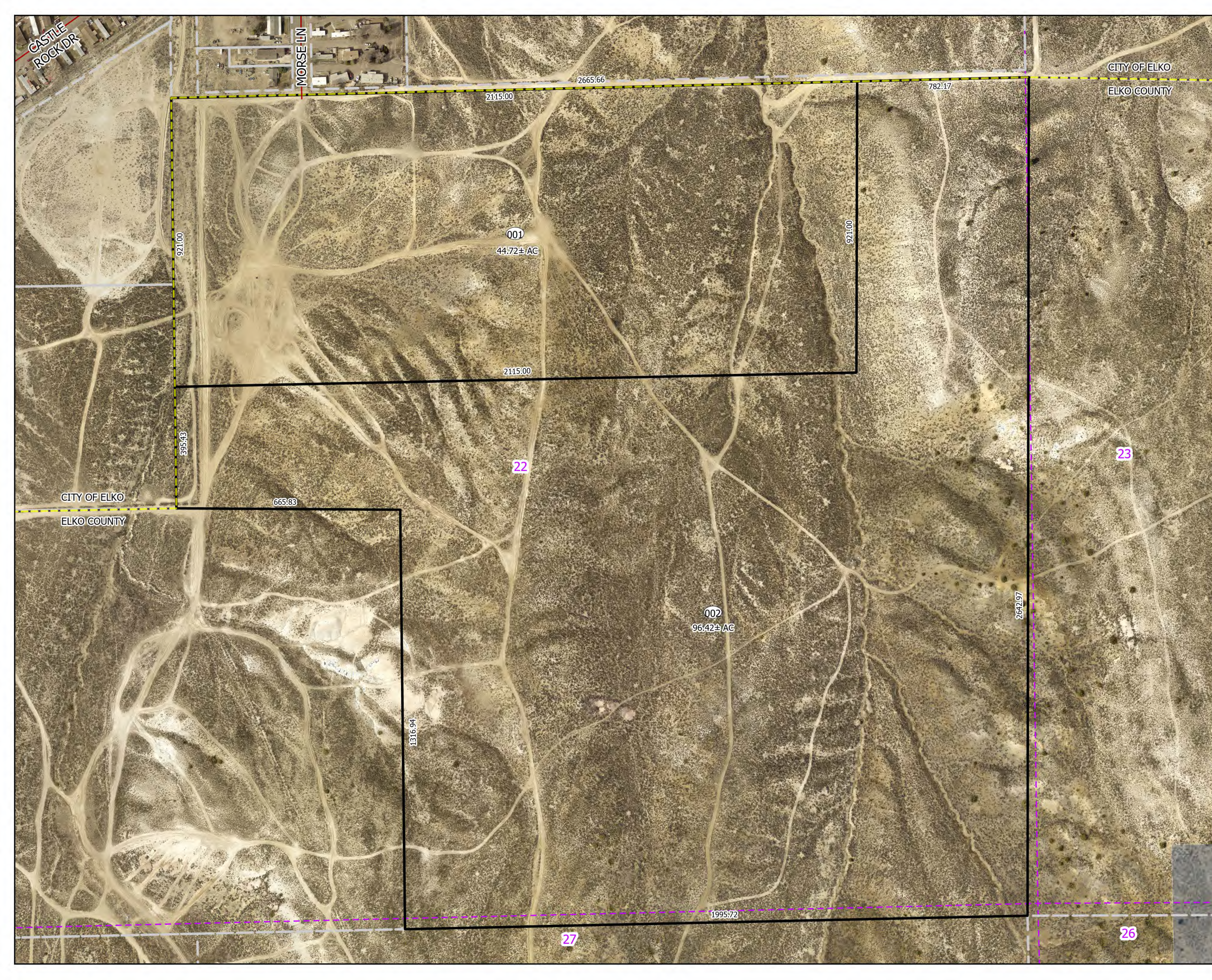
Reference Documents:
836820

This map does NOT represent a survey.
It is compiled from official records, including
surveys and deeds. Recorded documents
should be used for detailed legal information.
Unless approved by Elko County Assessor, other
uses are forbidden.

FOR ASSESSMENT USE ONLY

Background image - 2022 Pictometry
Flyover

Product of GIS
Last Update 5/28/2024 APM



CASTLE
ROCK DR
MORSE LN

CITY OF ELKO
ELKO COUNTY

CITY OF ELKO
ELKO COUNTY

001
44.72± AC

002
96.42± AC

22

23

27

26

921.00

395.43

665.83

1316.94

1995.72

2115.00

2665.66

782.17

921.00

2642.97