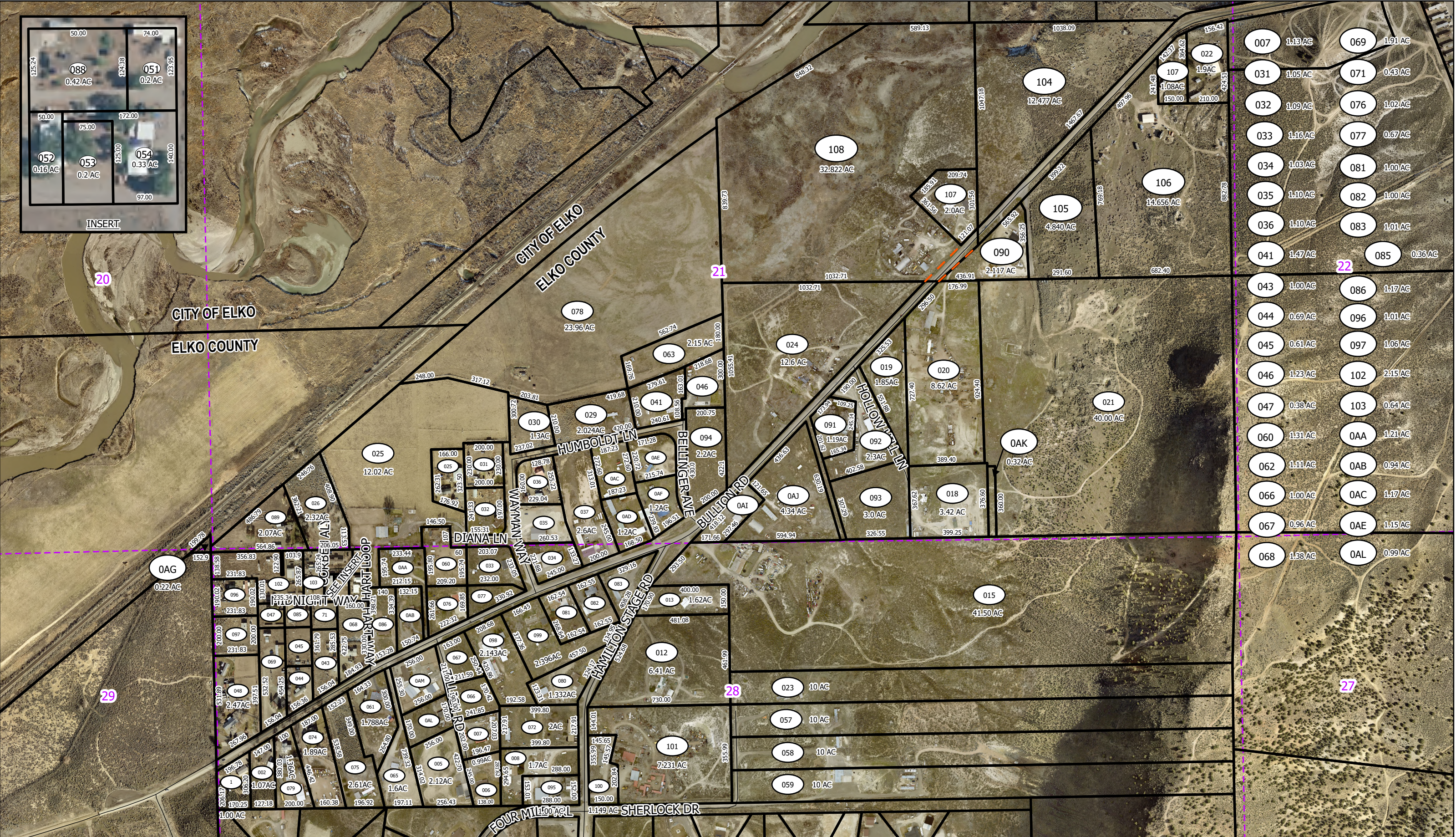


INSERT



007	1.13 AC	069	1.91 AC
031	1.05 AC	071	0.43 AC
032	1.09 AC	076	1.02 AC
033	1.16 AC	077	0.67 AC
034	1.03 AC	081	1.00 AC
035	1.10 AC	082	1.00 AC
036	1.10 AC	083	1.01 AC
041	1.47 AC	085	0.36 AC
043	1.00 AC	086	1.17 AC
044	0.69 AC	096	1.01 AC
045	0.61 AC	097	1.06 AC
046	1.23 AC	102	2.15 AC
047	0.38 AC	103	0.64 AC
060	1.31 AC	OAA	1.21 AC
062	1.11 AC	OAB	0.94 AC
066	1.00 AC	OAC	1.17 AC
067	0.96 AC	OAE	1.15 AC
068	1.38 AC	OAL	0.99 AC



**Legend**

- Parcel
- Road
- Public Land
- Township Range

This map does NOT represent a survey. It is compiled from official records, including surveys and deeds. Recorded documents should be used for detailed legal information. Unless approved by Elko County Assessor, other uses are forbidden.

**006-09H  
SPECIAL LANDS**

**FOR ASSESSMENT USE ONLY**

Reference Documents:  
 Parcel Map# 572072, 840106  
 ROS/BLA# 610848, 797515, 841410, 861069  
 Background image - 2022 NAIP Flyover Downloaded from USDA  
 Last Update 06/03/2026 ZAF

