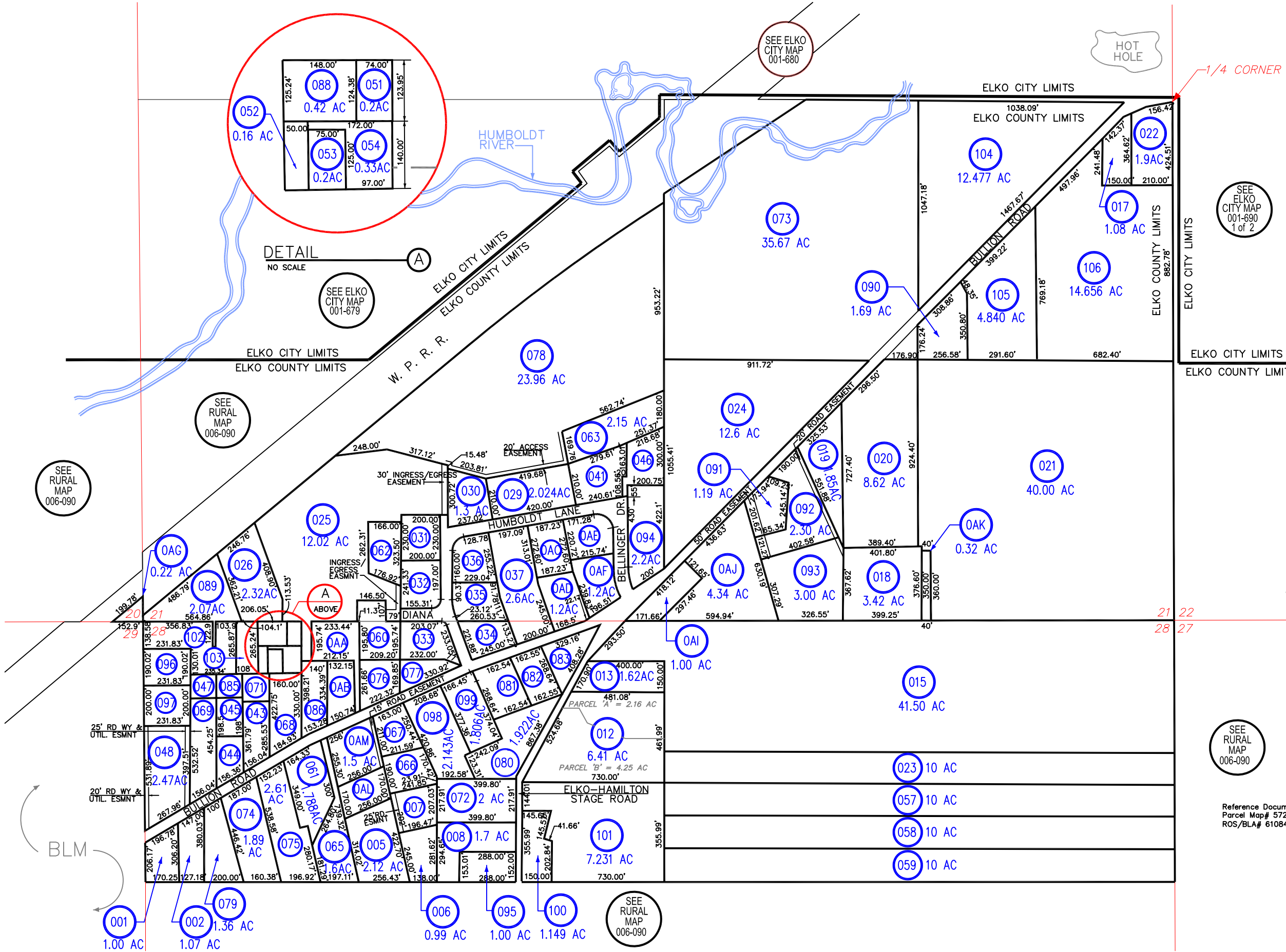


006-09H



007	1.13 AC	069	1.91 AC
031	1.05 AC	071	0.43 AC
032	1.09 AC	076	1.02 AC
033	1.16 AC	077	0.67 AC
034	1.03 AC	081	1.00 AC
035	1.10 AC	082	1.00 AC
036	1.10 AC	083	1.01 AC
041	1.47 AC	085	0.36 AC
043	1.00 AC	086	1.17 AC
044	0.69 AC	096	1.01 AC
045	0.61 AC	097	1.06 AC
046	1.23 AC	102	2.15 AC
047	0.38 AC	103	0.64 AC
060	1.31 AC	OAA	1.21 AC
062	1.11 AC	OAB	0.94 AC
066	1.00 AC	OAC	1.17 AC
067	0.96 AC	OAE	1.15 AC
068	1.38 AC	OAL	0.99 AC

SPECIAL LANDS

PORTIONS OF SECTIONS 21 & 28
T. 34 N., R. 55 E., M. D. B. & M.
ELKO COUNTY, NEVADA

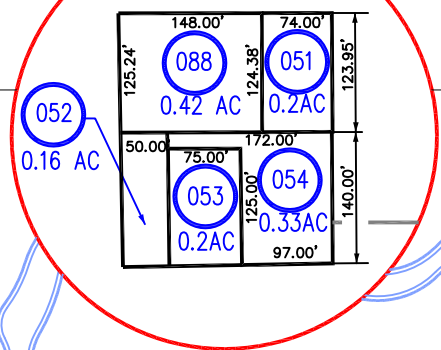
FOR ASSESSMENT USE ONLY

This map does NOT represent a survey. It is compiled from official records, including surveys and deeds. Recorded documents should be used for detailed legal information. Unless approved by Elko County Assessor, other uses are forbidden.

Revised 11/24/2021 JLS

SEE RURAL MAP 006-090

Reference Documents:
Parcel Map# 572072
ROS/BLA# 610848, 797515



DETAIL
NO SCALE

SEE ELKO CITY MAP 001-679

SEE ELKO CITY MAP 001-680

SEE ELKO CITY MAP 001-690 1 of 2

SEE RURAL MAP 006-090

SEE RURAL MAP 006-090

SCALE: 1" = 500'

21 22
28 27

BLM

SEE RURAL MAP 006-090