

SPECIAL LANDS

IN

PORTIONS OF SECTIONS 31 & 32, T. 46 N., R. 54 E., M. D. B. & M.
& SECTION 6, T. 45 N., R. 54 E., M. D. B. & M.

SEE
RURAL
MAP
005-630

SEE
RURAL
MAP
005-630

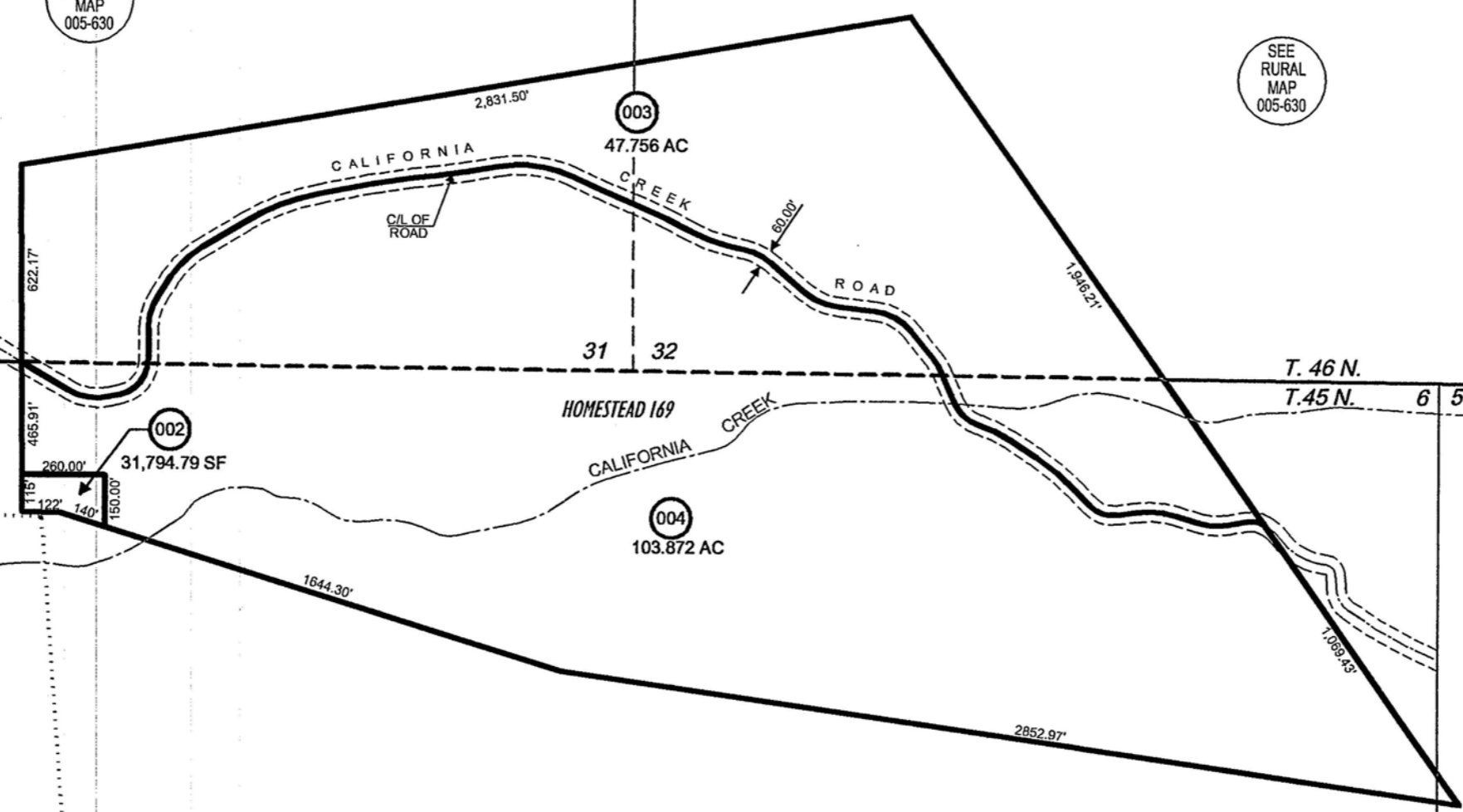
SEE
RURAL
MAP
005-620

TRACT 37
T. 46 N.
T. 45 N.

MINERAL SURVEY
2148

R. 53 E.
R. 54 E.

MINERAL SURVEY
2147



SCALE: 1" = 500'

NOTE :
 FOR RECORDED MAP SEE :
 * FILE # 473513 REVISED BY FILE # 477226

ELKO COUNTY, NEVADA
FOR ASSESSMENT USE ONLY

This map does NOT represent a survey. It is compiled from official records, including surveys and deeds. Recorded documents should be used for detailed legal information. Unless approved by Elko County Assessor, other uses are forbidden.

Revised 01/2002 mac