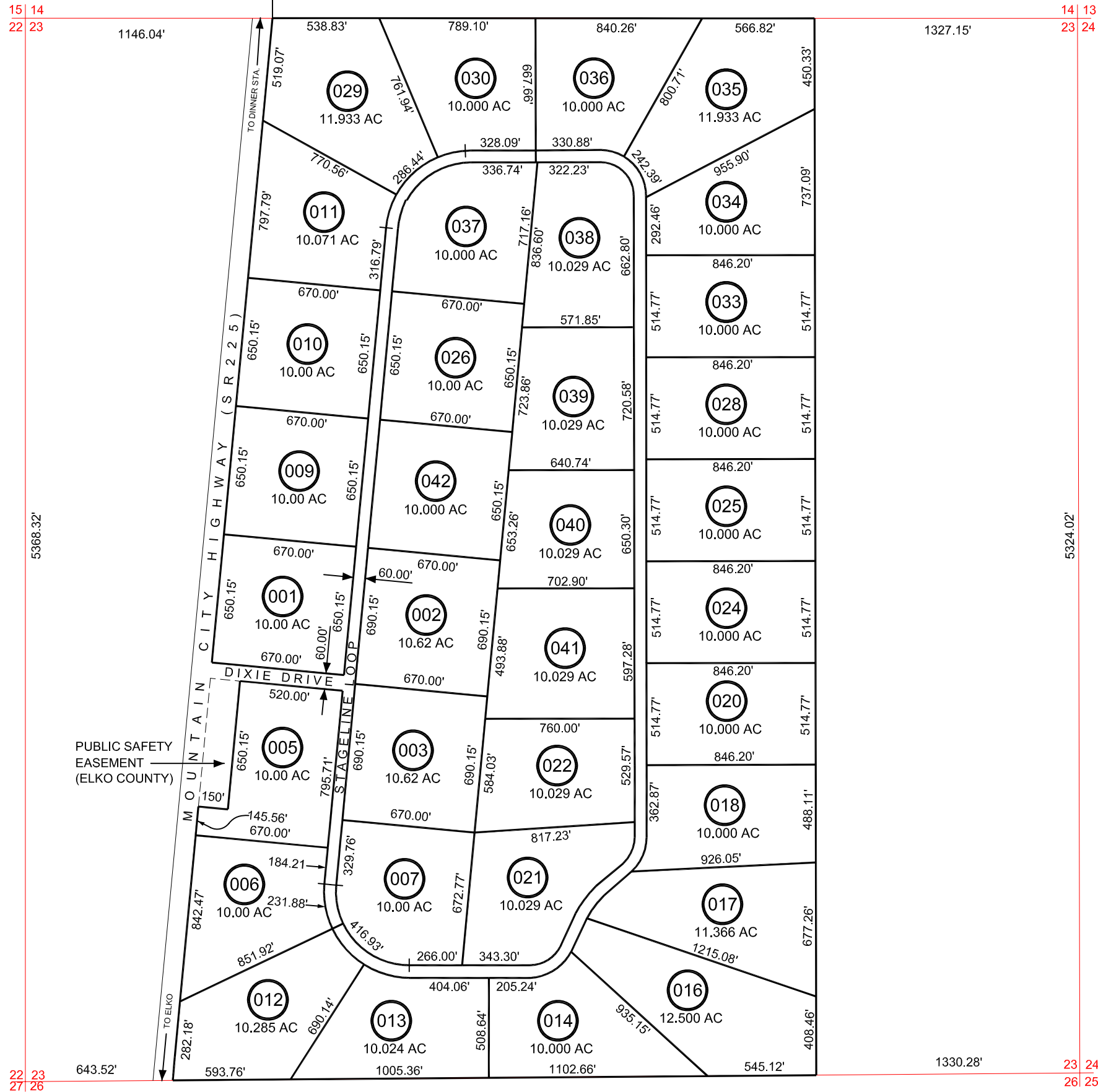


005-53A



SCALE: 1" = 600'

SPECIAL LANDS IN SECTION 23, T. 36 N., R. 54 E., M.D.B. & M.

Reference Documents
Parcel Map # 561071, 566098, 567982,
572966, 574520, 578750, 583478, 586860,
586861

ELKO COUNTY, NEVADA

FOR ASSESSMENT USE ONLY

This map does NOT represent a survey. It is compiled from official records, including surveys and deeds. Recorded documents should be used for detailed legal information. Unless approved by Elko County Assessor, other uses are forbidden.

Revised 12/2007 JLS