

SPECIAL LANDS

IN

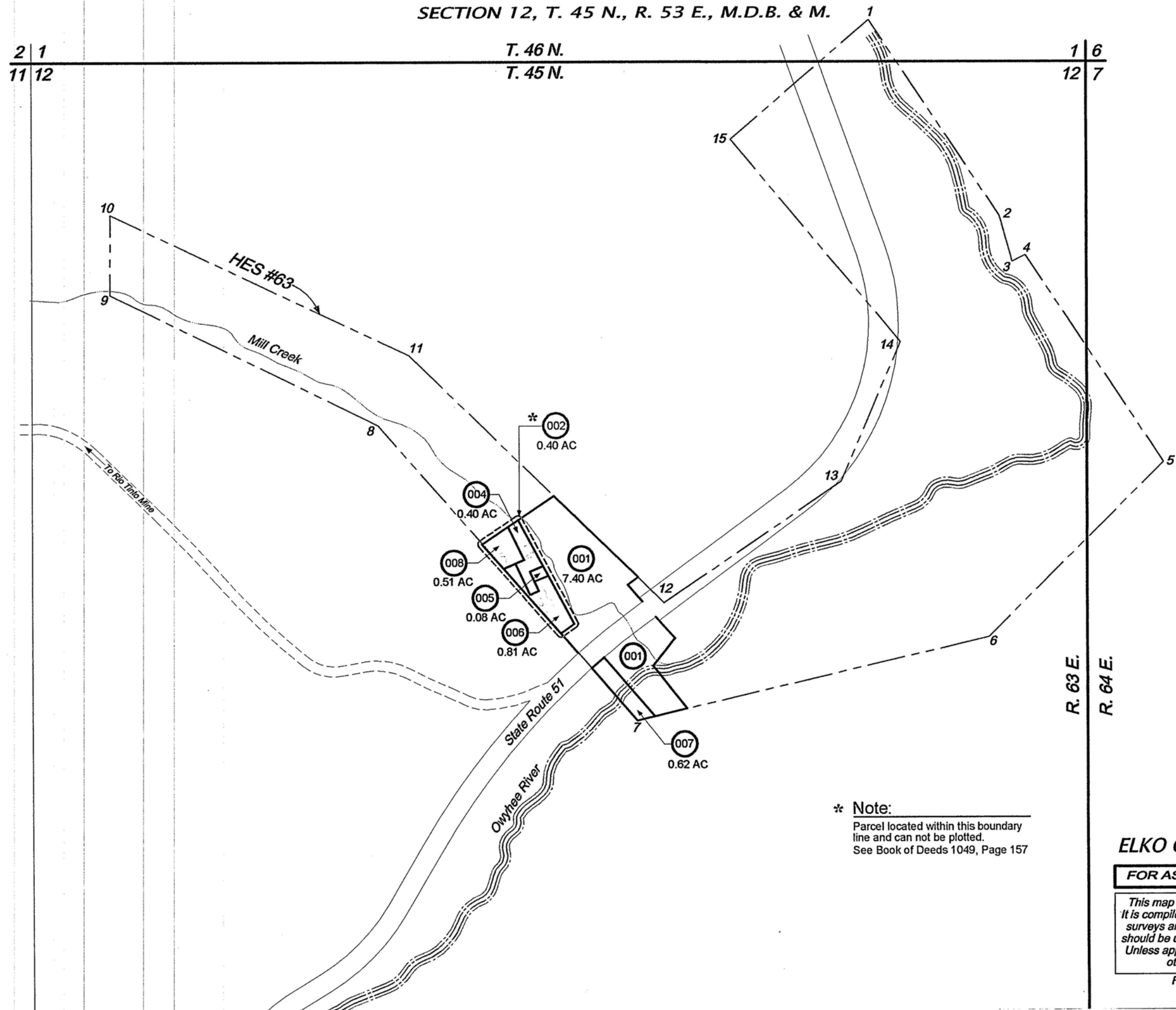
SECTION 12, T. 45 N., R. 53 E., M.D.B. & M.

005-40B

2 1
11 12

T. 46 N.
T. 45 N.

1 6
12 7



SCALE: 1" = 500'

* Note:
Parcel located within this boundary
line and can not be plotted.
See Book of Deeds 1049, Page 157

ELKO COUNTY, NEVADA

FOR ASSESSMENT USE ONLY

*This map does NOT represent a survey.
It is compiled from official records, including
surveys and deeds. Recorded documents
should be used for detailed legal information.
Unless approved by Elko County Assessor,
other uses are forbidden.*

Revised 09/2003 mac