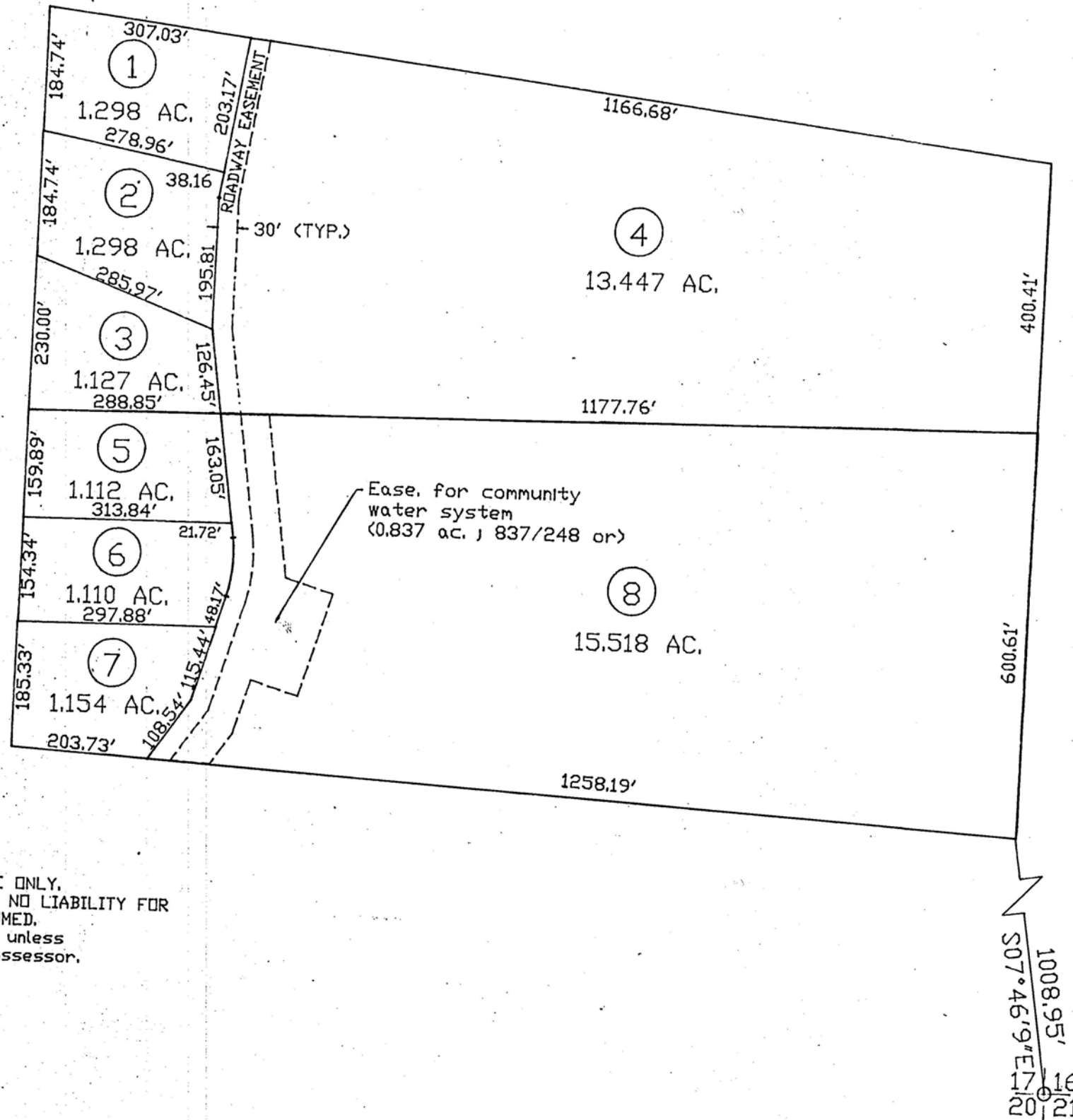


# SPECIAL LANDS

A Por of Sec. 17, T. 39 N. , R. 46 E., M.D.B.&M.

4-26C



1" = 200'

NOTE:

Source Ref.s are the recorded parcel maps with File numbers 182931 & 182932.

FOR ASSESSMENT USE ONLY.  
 DOES NOT REPRESENT A SURVEY, NO LIABILITY FOR  
 ACCURACY IS ASSUMED.  
 Other uses forbidden unless  
 approved by County Assessor.

Elko County