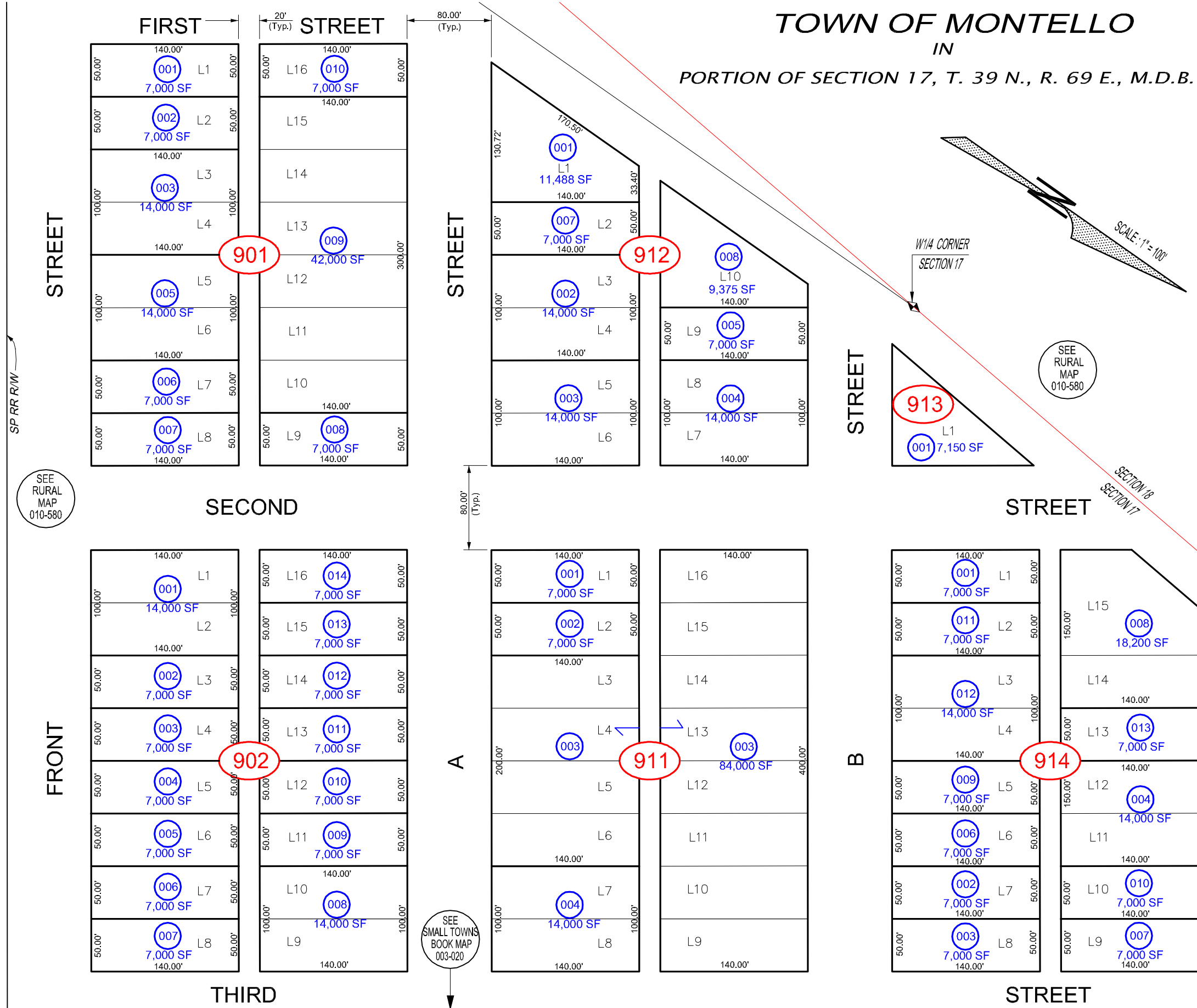


TOWN OF MONTELLO
IN
PORTION OF SECTION 17, T. 39 N., R. 69 E., M.D.B. & M.



APN	PARCEL LOCATION	APN	PARCEL LOCATION
003 901 001	FRONT ST & 2ND ST	003 907 005	"A"/7TH ST & "B"/7TH
003 901 002	FRONT ST	003 907 006	"B" ST
003 901 003	124 FRONT ST	003 907 008	"B" ST
003 901 005	FRONT ST	003 907 009	"B" ST & 6TH ST
003 901 006	FRONT ST	003 907 010	"B" ST
003 901 007	FRONT ST & 2ND ST	003 907 011	"B" ST
003 901 008	"A" ST & 2ND ST	003 908 001	"A" ST & 5TH ST
003 901 009	"A" ST	003 908 002	"A" ST
003 901 010	"A" ST & 1ST ST	003 908 004	"A" ST
003 902 001	FRONT ST & 2ND ST	003 908 005	"B" ST & 6TH ST
003 902 002	FRONT ST	003 908 006	"B" ST & 5TH ST
003 902 003	FRONT ST	003 908 007	"A" ST & 6TH ST
003 902 004	FRONT ST	003 908 008	"B" ST
003 902 005	FRONT ST	003 908 009	"B" ST
003 902 006	FRONT ST & 3RD ST	003 908 010	"B" ST
003 902 007	FRONT ST & 3RD ST	003 908 011	"A" ST & 6TH ST
003 902 008	"A" ST & 3RD ST	003 908 012	"A" ST & 4TH ST
003 902 009	"A" ST	003 909 003	"A" ST
003 902 010	"A" ST	003 909 004	"A" ST
003 902 011	"A" ST	003 909 005	"A" ST
003 902 012	"A" ST	003 909 006	"A" ST & 4TH ST
003 902 013	"A" ST	003 909 007	"B" ST
003 902 014	"A" ST & 2ND ST	003 909 008	"B" ST
003 903 001	FRONT ST & 3RD ST	003 909 009	"B" ST
003 903 003	FRONT ST MOTEL/STATION	003 909 010	"B" ST
003 903 005	FRONT ST	003 909 011	"A" ST
003 903 006	FRONT ST/WILSON'S COR	003 909 012	"B" ST
003 903 007	FRONT & 4TH BAR/CAFE	003 909 013	"B" ST & 5TH ST
003 903 008	"A" ST & 4TH ST	003 909 014	"A" ST
003 903 009	"A" ST	003 909 015	"A" ST
003 903 010	"A" ST	003 910 001	"A" ST & 3RD ST
003 903 012	"A" ST	003 910 002	"A" ST
003 903 013	"A" ST & 3RD ST	003 910 003	"A" ST
003 904 001	FRONT ST & 4TH ST	003 910 004	"A" ST
003 904 002	FRONT ST	003 910 005	"A" ST
003 904 003	FRONT ST	003 910 006	"A" ST & 4TH ST
003 904 004	FRONT ST	003 910 007	"B" ST & 4TH ST
003 904 005	FRONT ST	003 910 008	"B" ST
003 904 006	FRONT ST & 5TH ST	003 910 009	"B" ST
003 904 007	"A" ST	003 910 010	"B" ST & 3RD ST
003 904 008	"A" STREET	003 910 011	B ST
003 904 009	"A" ST	003 911 001	"A" ST & 2ND ST
003 904 010	"A" ST	003 911 002	"A" ST
003 904 011	A ST/4TH ST--JAIL/HALL	003 911 003	"B" ST & 2ND ST
003 904 012	"A" ST & 5TH ST	003 911 004	"A" ST
003 904 013	"A" ST	003 912 001	"A" ST & 1ST ST
003 905 001	FRONT ST & 5TH ST	003 912 002	"A" ST
003 905 002	FRONT ST	003 912 003	"A" ST & 2ND ST
003 905 003	FRONT ST	003 912 004	"A" ST & 2ND
003 905 004	FRONT ST & 6TH ST	003 912 005	"B" ST
003 905 005	"A" ST	003 912 007	"A" ST
003 905 006	"A" ST	003 912 008	"B" ST & 1ST ST
003 905 007	"A" ST & 5TH ST	003 913 001	"B" ST & 2ND ST
003 905 008	"A" ST & 6TH ST	003 914 001	"B" ST
003 906 001	"A" ST & 7TH ST	003 914 002	"B" ST
003 906 002	FRONT ST & 6TH ST	003 914 003	281 B ST
003 906 003	FRONT ST	003 914 004	"C" ST
003 906 004	FRONT ST & 7TH ST	003 914 006	"B" ST
003 906 005	FRONT ST	003 914 007	"C" ST & 3RD ST
003 906 006	"A" ST & 6TH ST	003 914 008	"C" ST & 1ST ST
003 906 007	"A" ST	003 914 009	"B" ST
003 906 008	"A" ST	003 914 010	"C" ST
003 907 001	"A" ST & 5TH ST	003 914 011	"B" ST
003 907 002	"A" ST	003 914 012	"B" ST
003 907 003	"A" ST		
003 907 004	"A" ST		

ELKO COUNTY, NEVADA

FOR ASSESSMENT USE ONLY

This map does NOT represent a survey. It is compiled from official records, including surveys and deeds. Recorded documents should be used for detailed legal information. Unless approved by Elko County Assessor, other uses are forbidden.