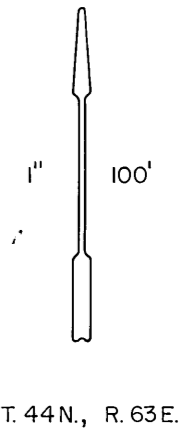
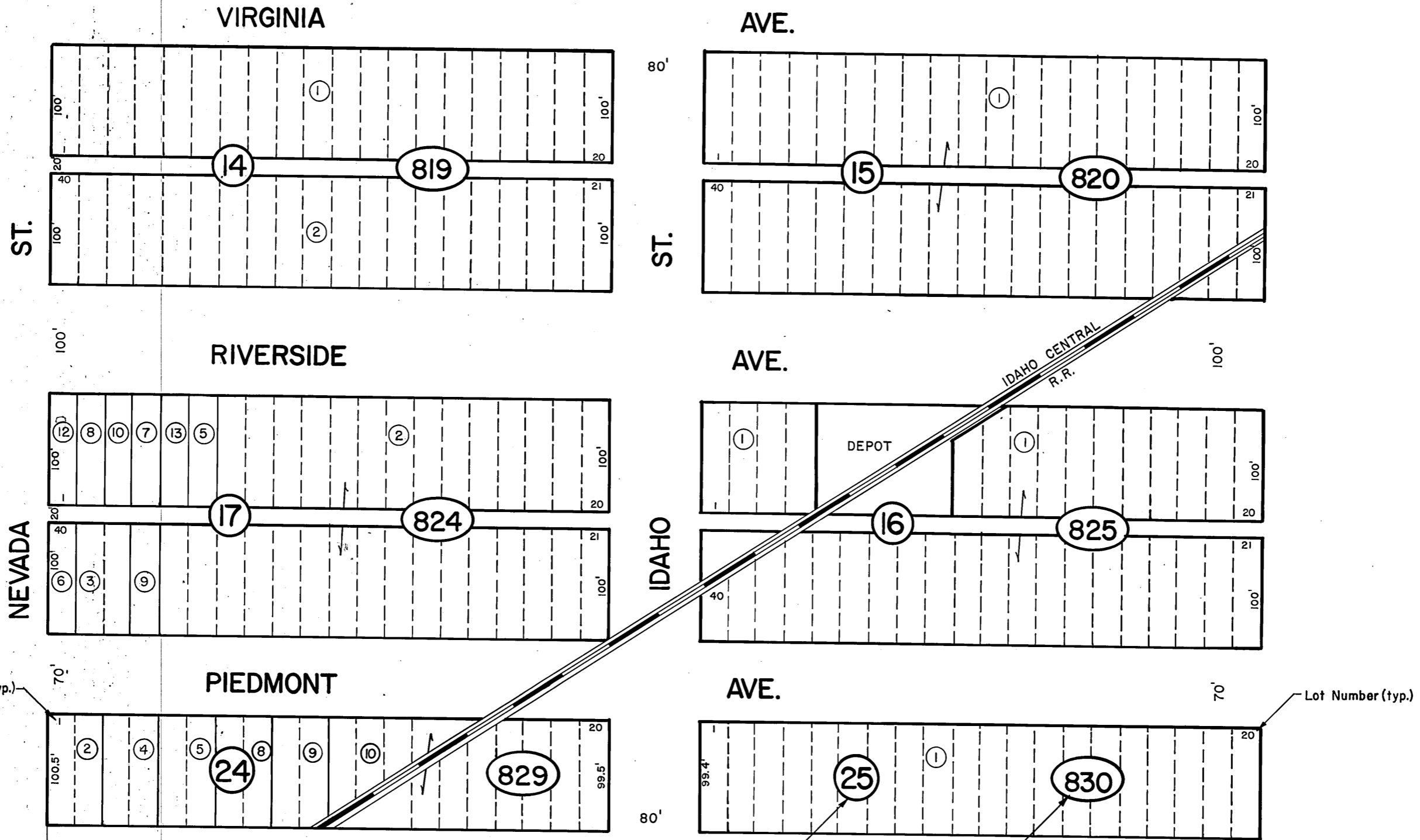


Town of Riverside
 within NW1/4 SE1/4 Sec. 2, T. 44 N., R. 63 E.

3-83



Lot Number (typ.)

Lot Number (typ.)

to U.S. 93

Original Block N^o (typ.)

Assessor's Block N^o (typ.)

FOR ASSESSMENT USE ONLY
 DOES NOT REPRESENT A SURVEY, NO LIABILITY
 FOR ACCURACY IS ASSUMED. OTHER USE FORBID-
 DEN, UNLESS APPROVED BY ELKO CO. ASSESSOR.

ELKO COUNTY

REV. Jan. 16, 1982 - UK