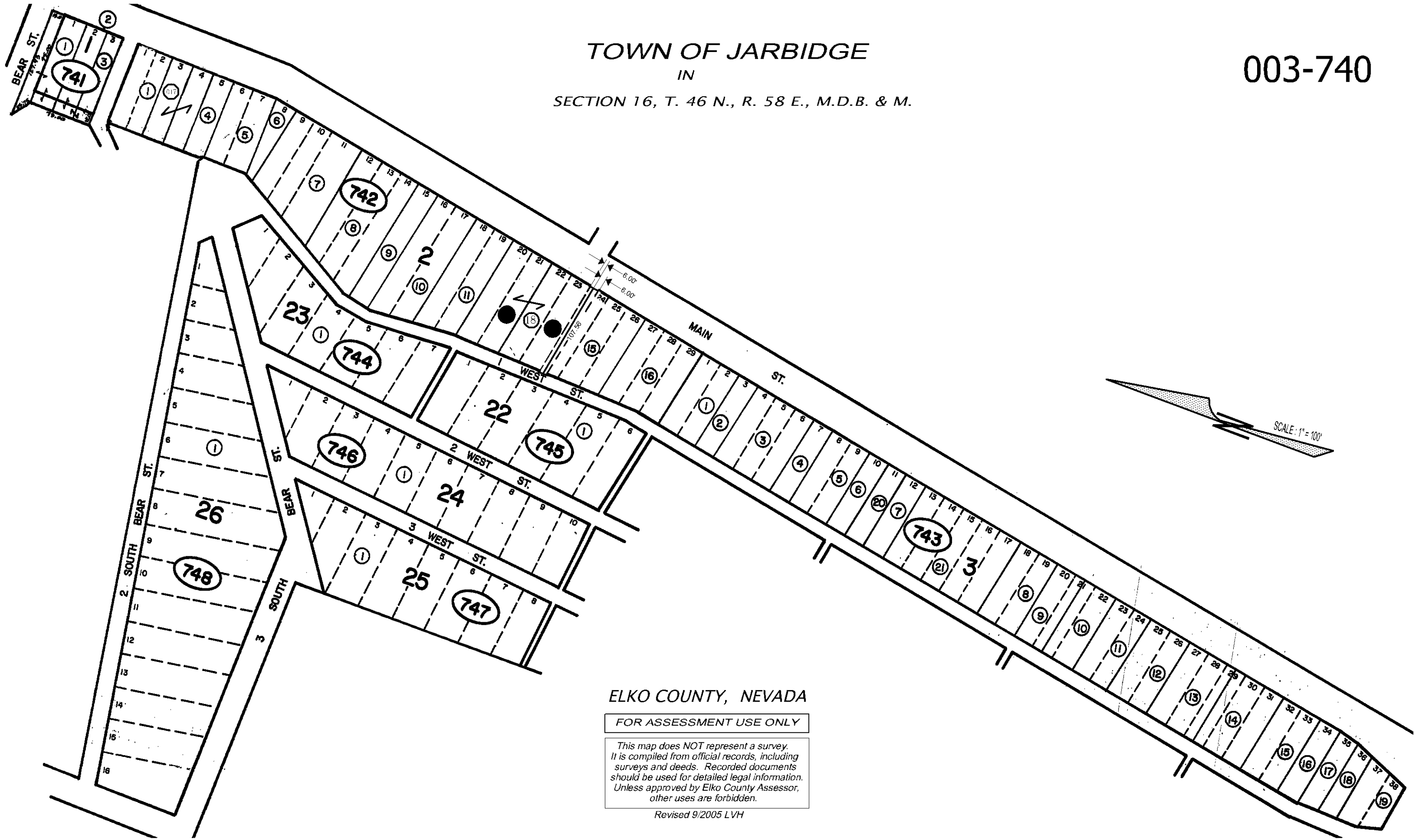


TOWN OF JARBIDGE
IN

SECTION 16, T. 46 N., R. 58 E., M.D.B. & M.

003-740



ELKO COUNTY, NEVADA

FOR ASSESSMENT USE ONLY

This map does NOT represent a survey.
It is compiled from official records, including
surveys and deeds. Recorded documents
should be used for detailed legal information.
Unless approved by Elko County Assessor,
other uses are forbidden.

Revised 9/2005 LVH