

# TOWN OF JARBIDGE

IN

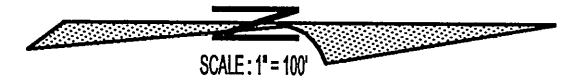
WEST 1/2 OF SECTION 16, T. 46 N., R. 58 E., M.D.B. & M.

## 003-720

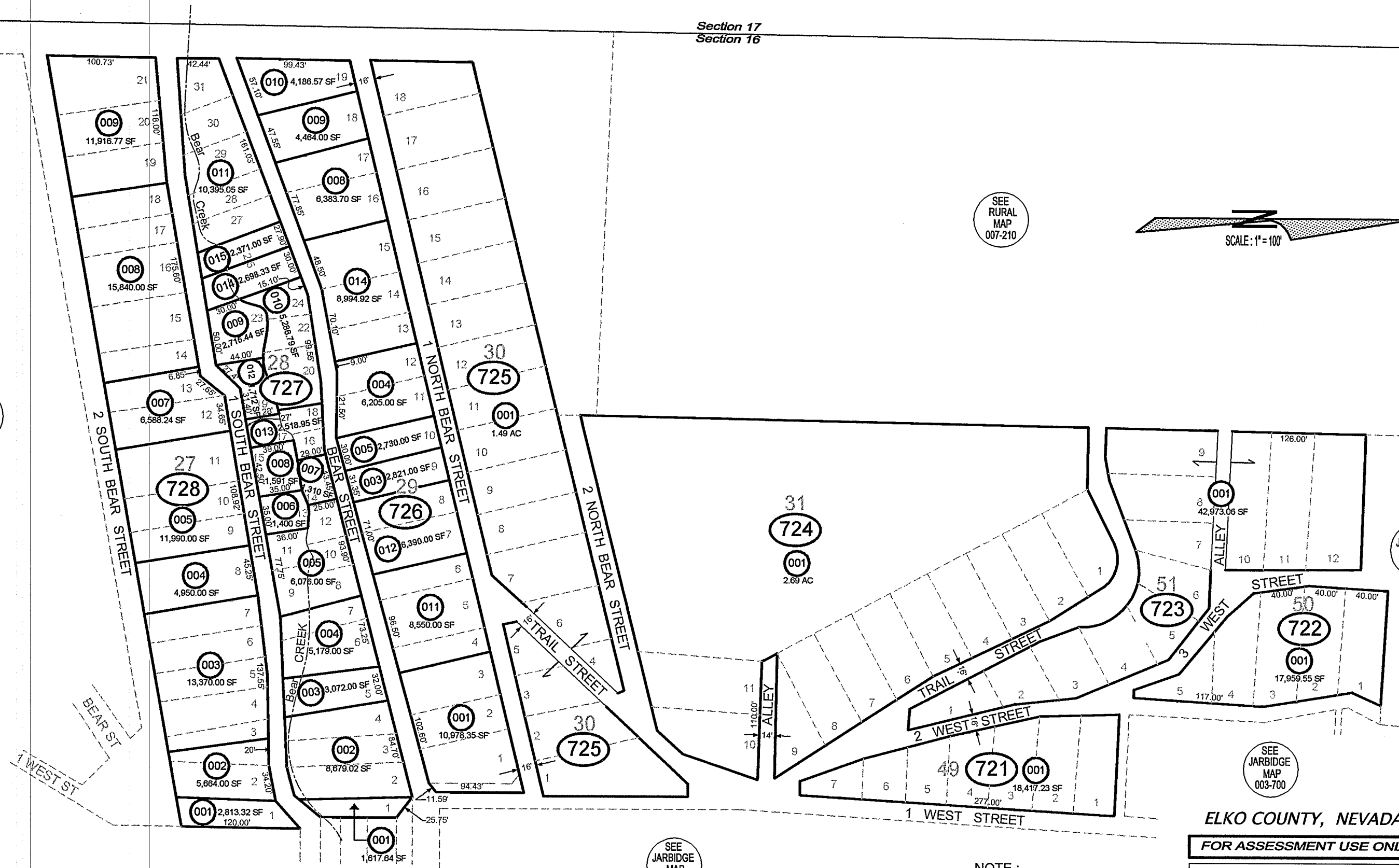
SEE  
RURAL  
MAP  
007-210

Section 17  
Section 16

SEE  
RURAL  
MAP  
007-210



SEE  
JARBIDGE  
MAP  
003-740



SEE  
JARBIDGE  
MAP  
003-740

SEE  
JARBIDGE  
MAP  
003-710

SEE  
JARBIDGE  
MAP  
003-700

SEE  
JARBIDGE  
MAP  
003-720

NOTE:  
SEE SURVEY MAP FILE # 31210

**ELKO COUNTY, NEVADA**  
**FOR ASSESSMENT USE ONLY**

*This map does NOT represent a survey. It is compiled from official records, including surveys and deeds. Recorded documents should be used for detailed legal information. Unless approved by Elko County Assessor, other uses are forbidden.*

Revised 04/2003 mac