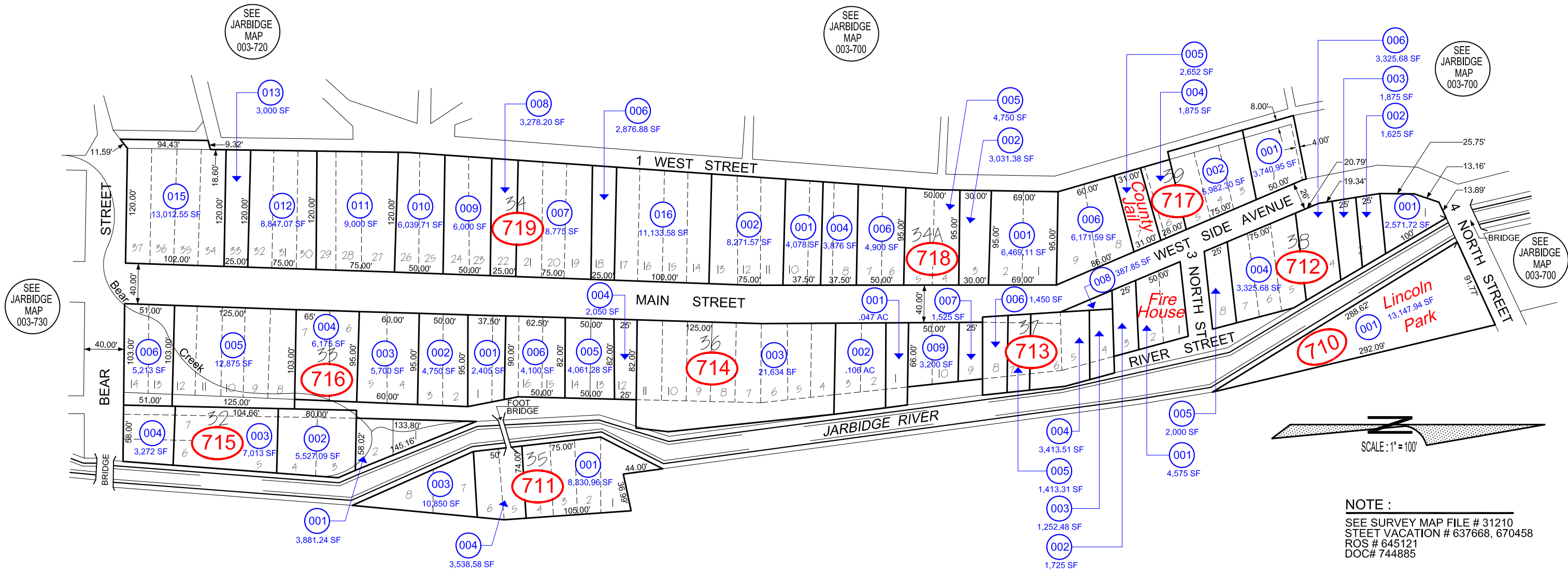


TOWN OF JARBIDGE
 IN
 WEST 1/2 OF SECTION 16, T. 46 N., R. 58 E., M.D.B. & M.

003-710



NOTE :
 SEE SURVEY MAP FILE # 31210
 STEET VACATION # 637668, 670458
 ROS # 645121
 DOC# 744885

ELKO COUNTY, NEVADA
FOR ASSESSMENT USE ONLY

This map does NOT represent a survey. It is compiled from official records, including surveys and deeds. Recorded documents should be used for detailed legal information. Unless approved by Elko County Assessor, other uses are forbidden.

Revised 10/05/2018 JLS