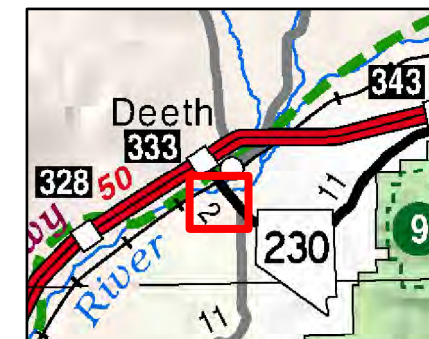
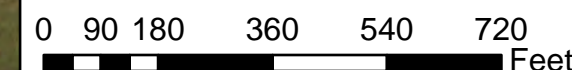


003-330
DEETH



Legend

- Subject Parcel
- Parcel
- Lot
- Public Land
- Road
- Railroad
- Section



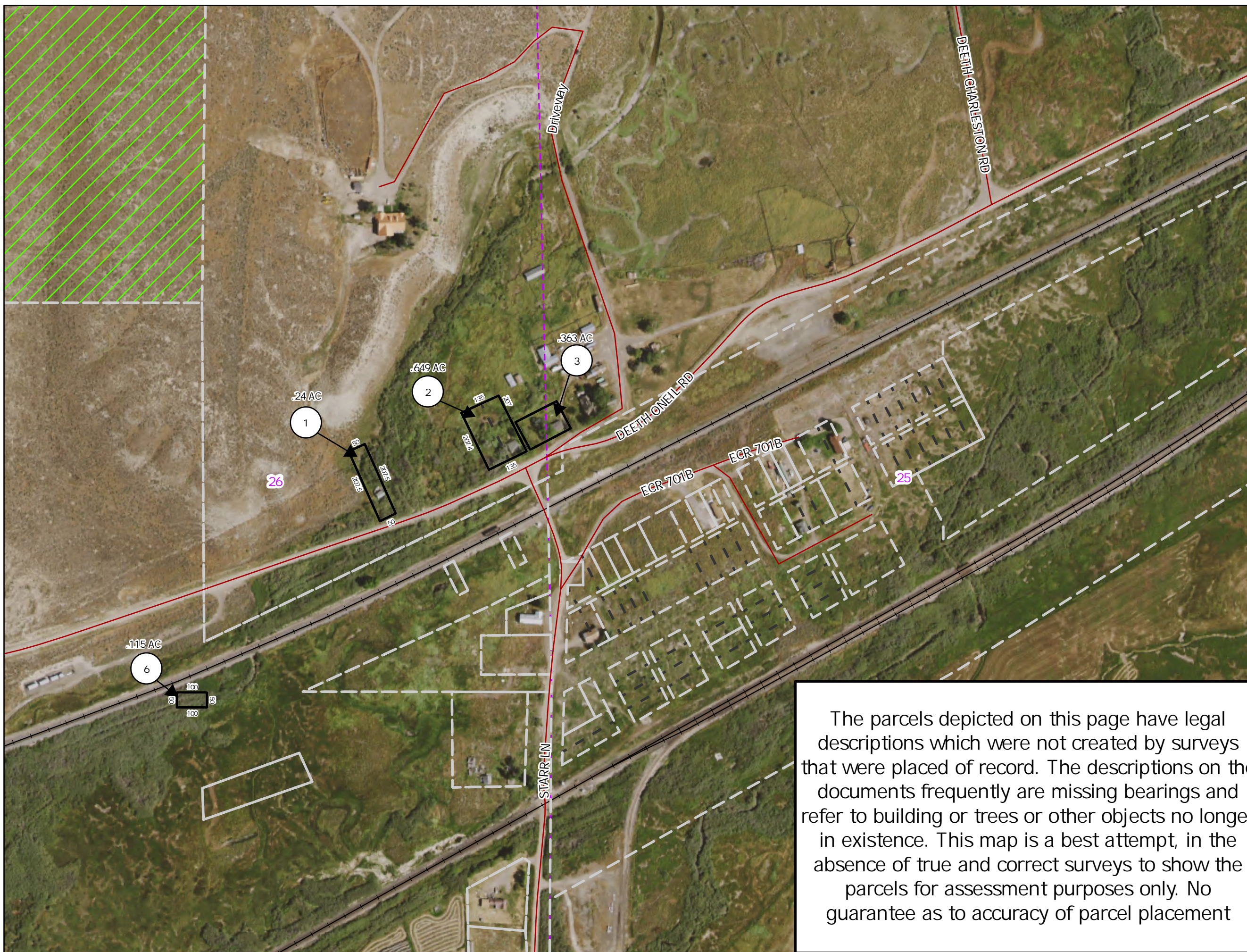
Reference Documents:
Map # 807452

This map does NOT represent a survey. It is compiled from official records, including surveys and deeds. Recorded documents should be used for detailed legal information. Unless approved by Elko County Assessor, other uses are forbidden.

FOR ASSESSMENT USE ONLY

Background image - 2019 NAIP flyover downloaded from the W.M. Keck Earth Sciences & Mining Research Information Center.

Product of GIS
Last Update 3/1/2023 APM



The parcels depicted on this page have legal descriptions which were not created by surveys that were placed of record. The descriptions on the documents frequently are missing bearings and refer to building or trees or other objects no longer in existence. This map is a best attempt, in the absence of true and correct surveys to show the parcels for assessment purposes only. No guarantee as to accuracy of parcel placement