

3-22

CONTACT

21

MAIN

70

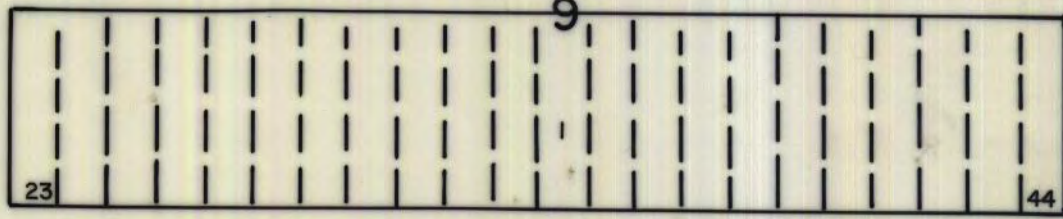
ST.

60

221



222

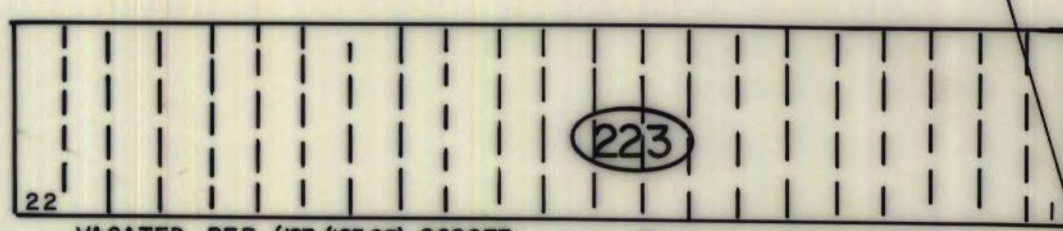


9

23

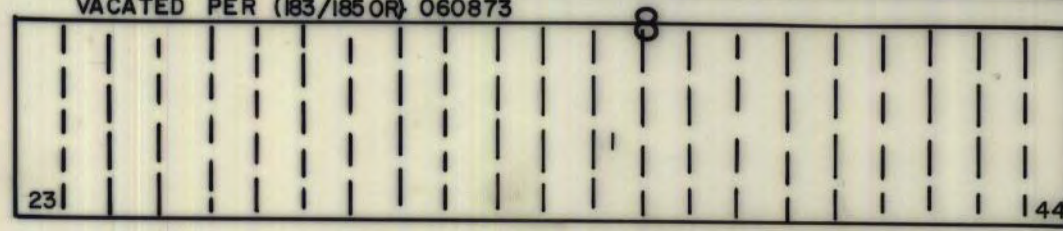
70

ELKO



223

60



8

23

44

ST.

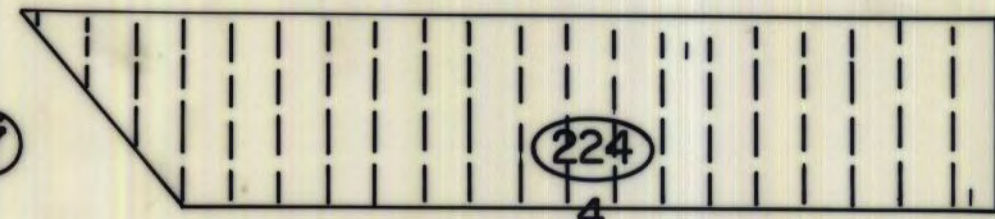
AVE.

CONTACT

BROADWAY

17

CONTACT CITY



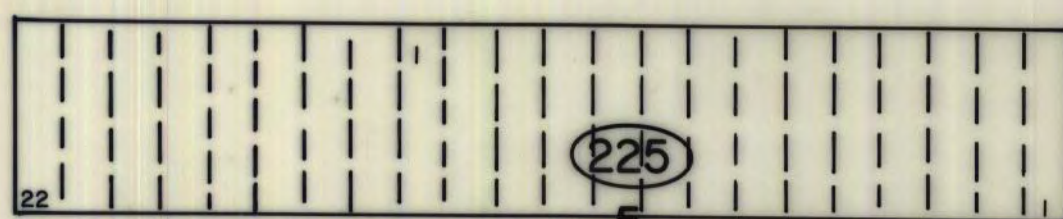
224

4

22

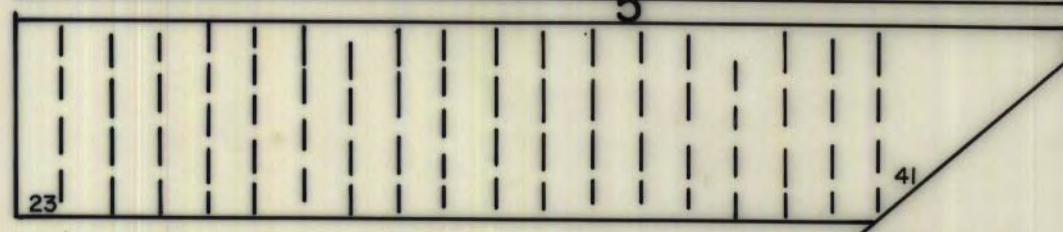
60

WELLS



225

22



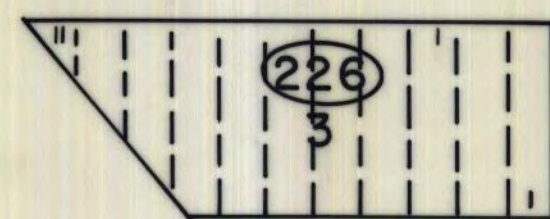
5

23

1.0' reserved

ST.

FALLS

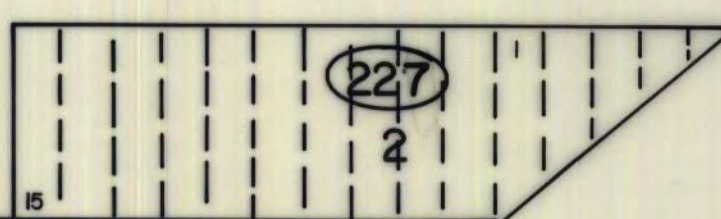


226

3

318.0'

SCHOOL



227

2

379.5'

BLOCK

228

ADDITION

23

SCALE: 1" = 100'

CONTACT

POSTED BY	DATE
D. DODGE	6-8-78

For assessment use only, does not represent a survey, no liability for accuracy is assured. Other uses forbidden unless approved by Elko County Assessor.

CASEY & MARSHALL'S