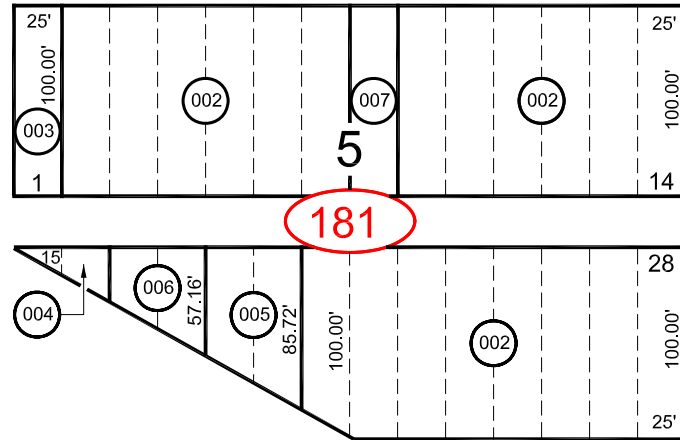


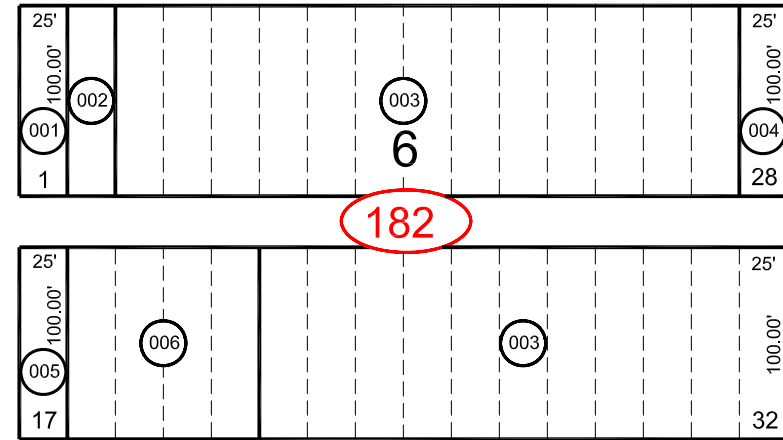
**TOWN OF CONTACT**  
 IN  
 SECTION 20, T. 45 N., R. 64 E., M.D.B. & M.

003-180

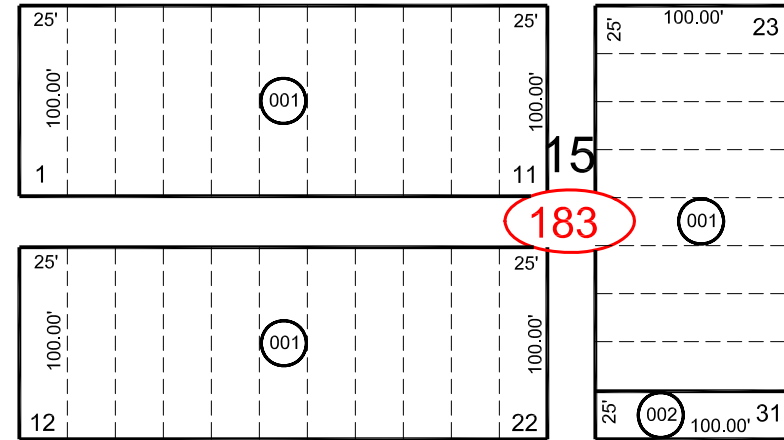
MAIN STREET



181

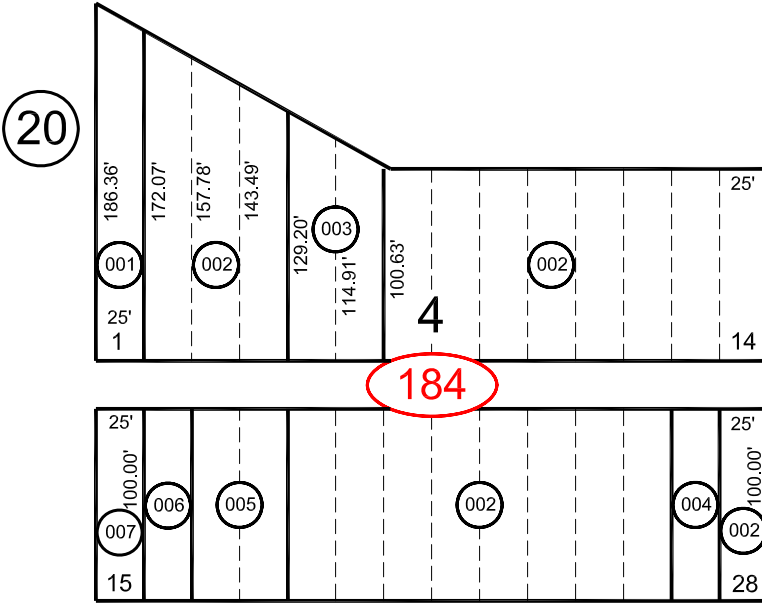


182

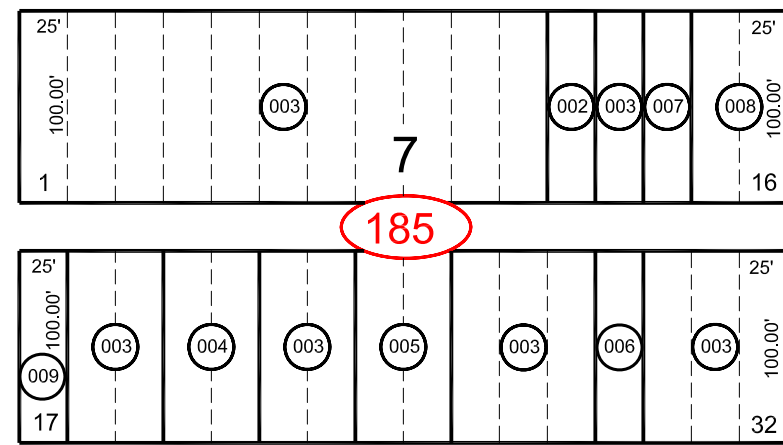


183

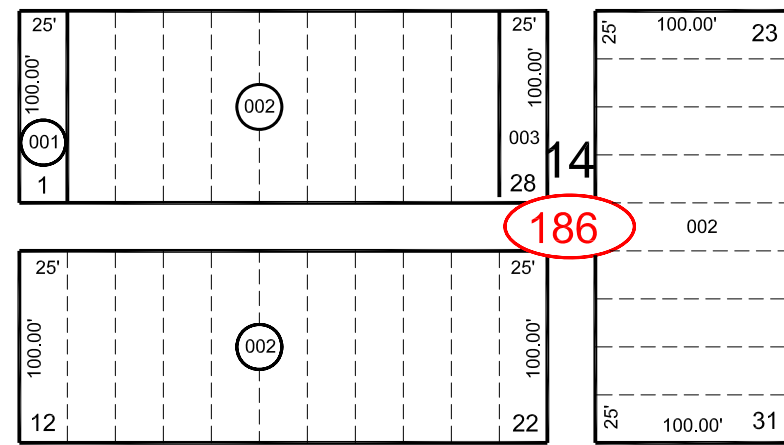
FIFTH STREET



184

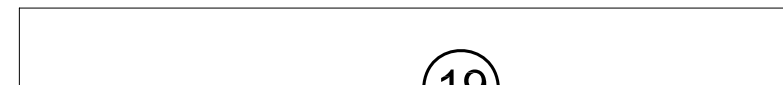


185



186

SIXTH STREET



19



AVENUE

AVENUE

CONTACT

TWIN FALLS

AVENUE

BROADWAY

25



SCALE: 1" = 100'

**GENERAL NOTE :**

The assessor's parcel number (APN) is a nine-digit identifier consisting of three elements:  
 Example: 003-186-002  
 - The first three digits, 003, represent the assessor's map book #.  
 - The second three digits, 186, represent the page/block #.  
 - The last three digits, 002, represent the parcel itself.

**ELKO COUNTY, NEVADA**

**FOR ASSESSMENT USE ONLY**

*This map does NOT represent a survey. It is compiled from official records, including surveys and deeds. Recorded documents should be used for detailed legal information. Unless approved by Elko County Assessor, other uses are forbidden.*

Revised 4/2007 JLS