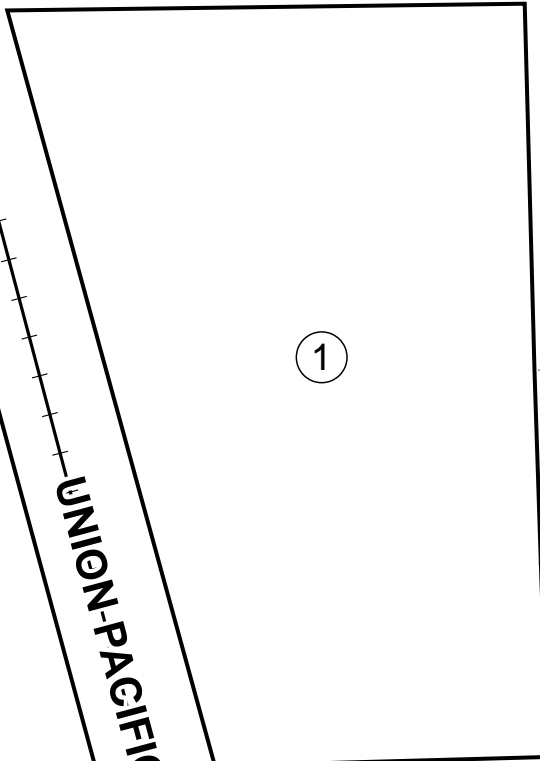
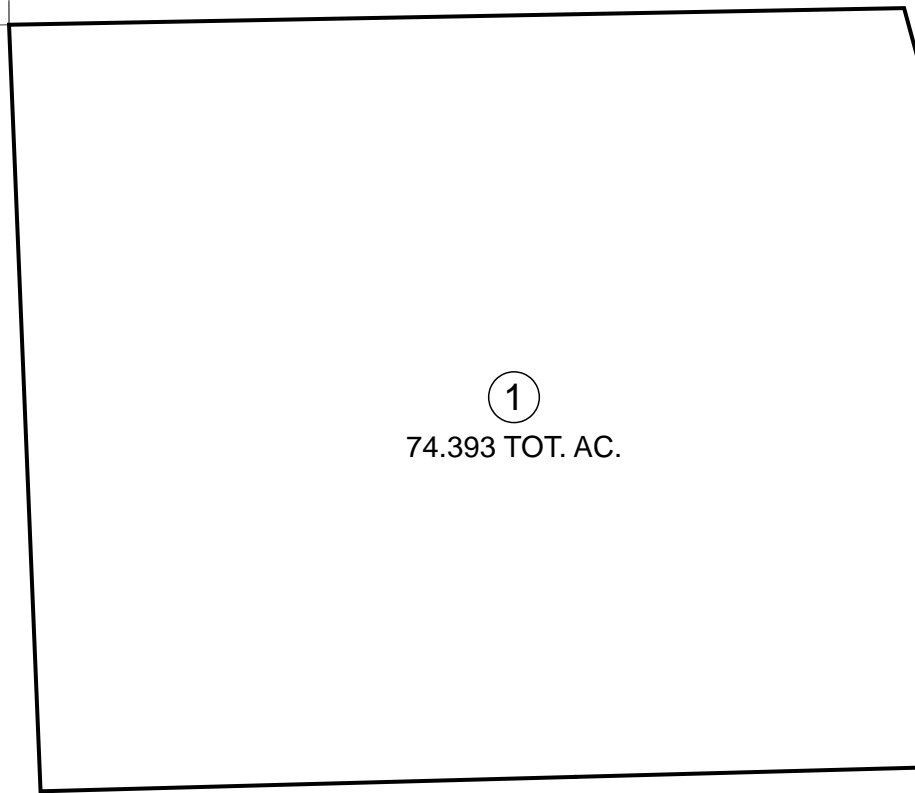


002-840  
CITY of WELLS

HOGAN

BK 002  
PG 810

BK 002  
PG 740



BK 008  
PG 34A

BK 008  
PG 340

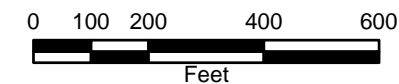
UNION-PACIFIC-RAILROAD

BK 008  
PG 34A




CLOVER VALLEY



POR. OF N1/2, NE1/4  
SEC. 16; TWP. 37N; RG. 62E  
M. D. B. & M.



**Legend**

-  Subject Parcel
-  Parcel
-  Railroad

Reference Documents:  
Annexation Map # 572771

For assessment use only, does not  
represent a survey, no liability  
for accuracy is assured. Other  
uses forbidden unless approved by  
Elko County Assessor.