

Elko County
City of Wells

SEE
Bk 008
Pg 350

SEE
Bk 002
Pg 680

2
480.00 AC

1
711.32 AC

SEE
Bk 008
Pg 340

Harriet Field

10TH ST

AIRPORT RD

INDUSTRIAL RD E

SEE
Bk 002
Pg 820

SEE
Bk 008
Pg 340

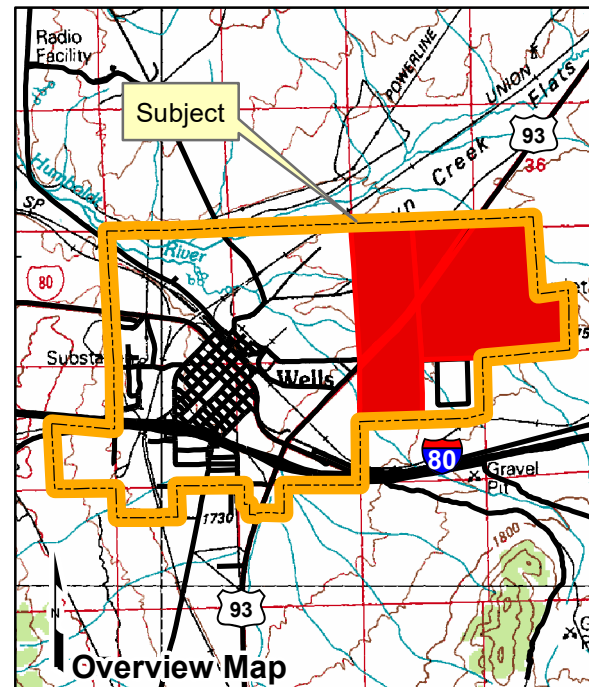
SEE
Bk 002
Pg 730

SEE
Bk 008
Pg 340

EL32

002-800 City of Wells

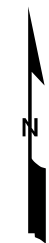
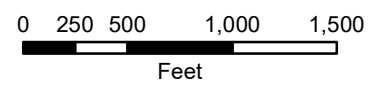
Portions of Secs. 1, 2, & 11
T37N R62E M.D.B.&M.



Legend

- Railroad
- Subject Parcel
- Parcel
- City Limit
- Section Line

Reference Documents:
Map #



For assessment use only, does not represent a survey, no liability for accuracy is assured. Other uses forbidden unless approved by Elko County Assessor.

Image - 2013 NAIP Flyover

Product of GIS
Last Update: 02/05/2018