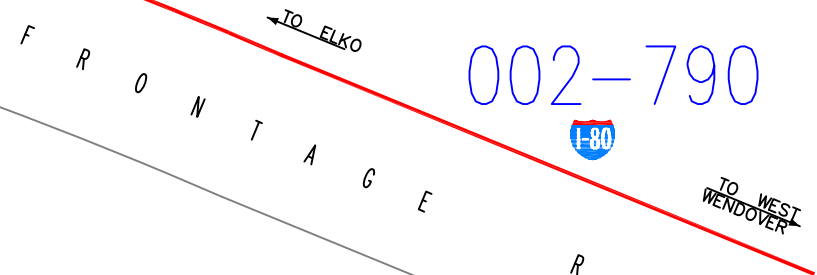
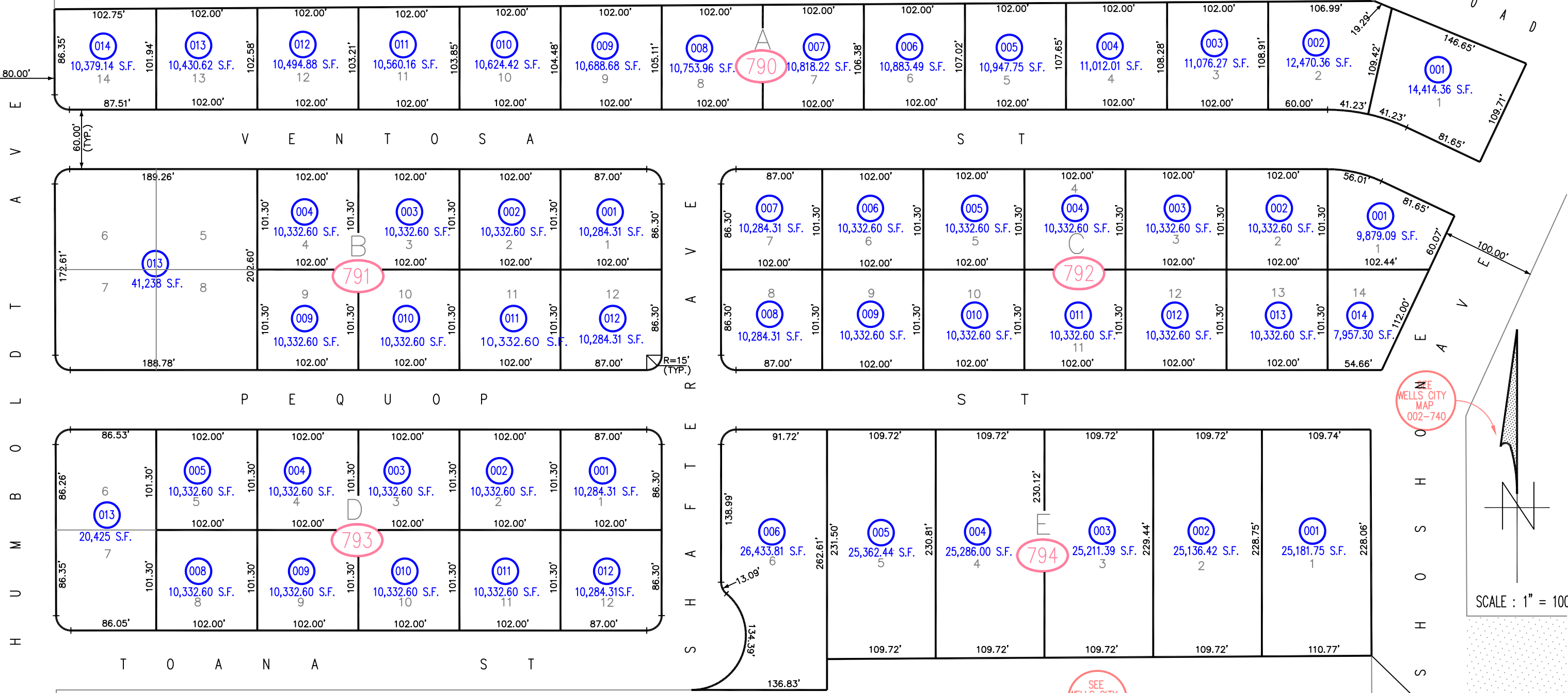


# CLOVER ESTATES IN SE1/4 SECTION 9, T.37N., R.62 E.

SEE  
WELLS CITY  
MAP  
002-740



002-790



SEE  
WELLS CITY  
MAP  
002-740

SEE  
WELLS CITY  
MAP  
002-750

SEE  
WELLS CITY  
MAP  
002-740

GENERAL NOTE :  
PARCEL NUMBERS ARE FOUND AS FOLLOWS :  
EXAMPLE APN : 002 - 794 - 003

002-790

← PAGE #

← USE THESE NUMBERS

794

← BLOCK #

003

← PARCEL #

SCALE : 1" = 100'

CITY OF WELLS  
ELKO COUNTY, NEVADA  
FOR ASSESSMENT USE ONLY

DOES NOT REPRESENT A SURVEY  
NO LIABILITY FOR ACCURACY IS ASSURED  
UNLESS APPROVED BY ELKO COUNTY ASSESSOR.  
OTHER USES ARE FORBIDDEN  
REVISED 12/17/2020 AS

9/10  
16/15