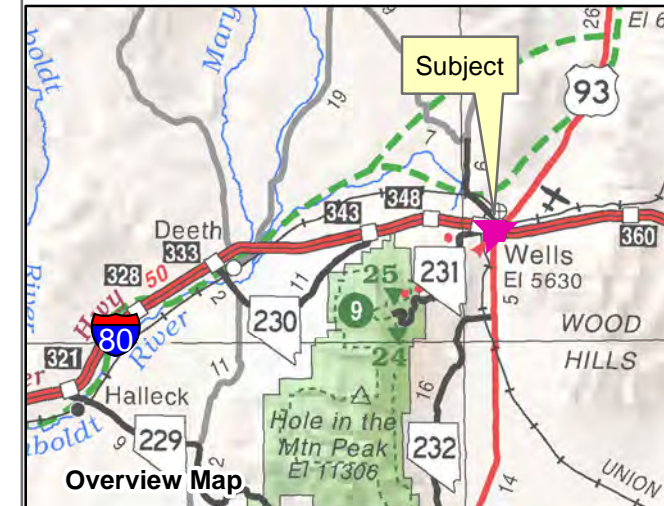


**002-740**  
**City of Wells**  
 Page 2 of 2  
**Pacific Addition #2**

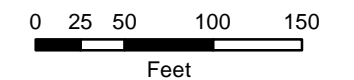
**S 12, Section 9, Township 37N Range 62E**  
**of the Mount Diablo Meridian, Nevada**



**Legend**

- Subject Parcel
- Parcel
- Lot

LATITUDE AND LONGITUDE ARE APPROXIMATE

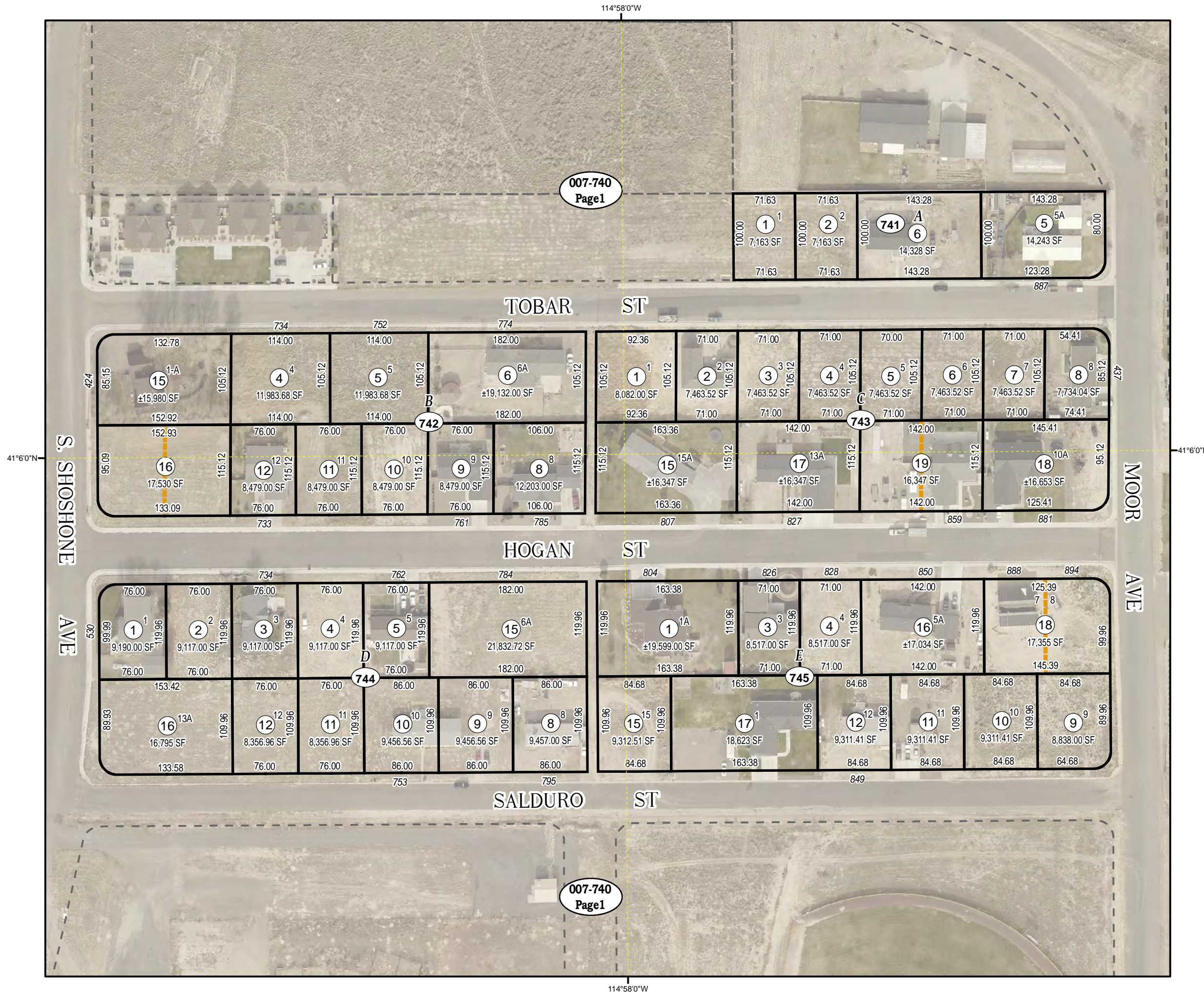


Reference Documents:  
 Map # 161490, 408961, 471033, 550038, 583350,  
 584280, 590618, 699413, 723828, 726756, 739094,  
 745618, 769024, 794424

This map does NOT represent a survey.  
 It is compiled from official records, including  
 surveys and deeds. Recorded documents  
 should be used for detailed legal information.  
 Unless approved by Elko County Assessor,  
 other uses are forbidden.

**FOR ASSESSMENT USE ONLY**

Background image - 2016 Pictometry flyover  
 Product of GIS  
 Last Update 10/06/2021 JLS



007-740  
Page 1

007-740  
Page 1

114°58'0"W

114°58'0"W

41°6'0"N

41°6'0"N