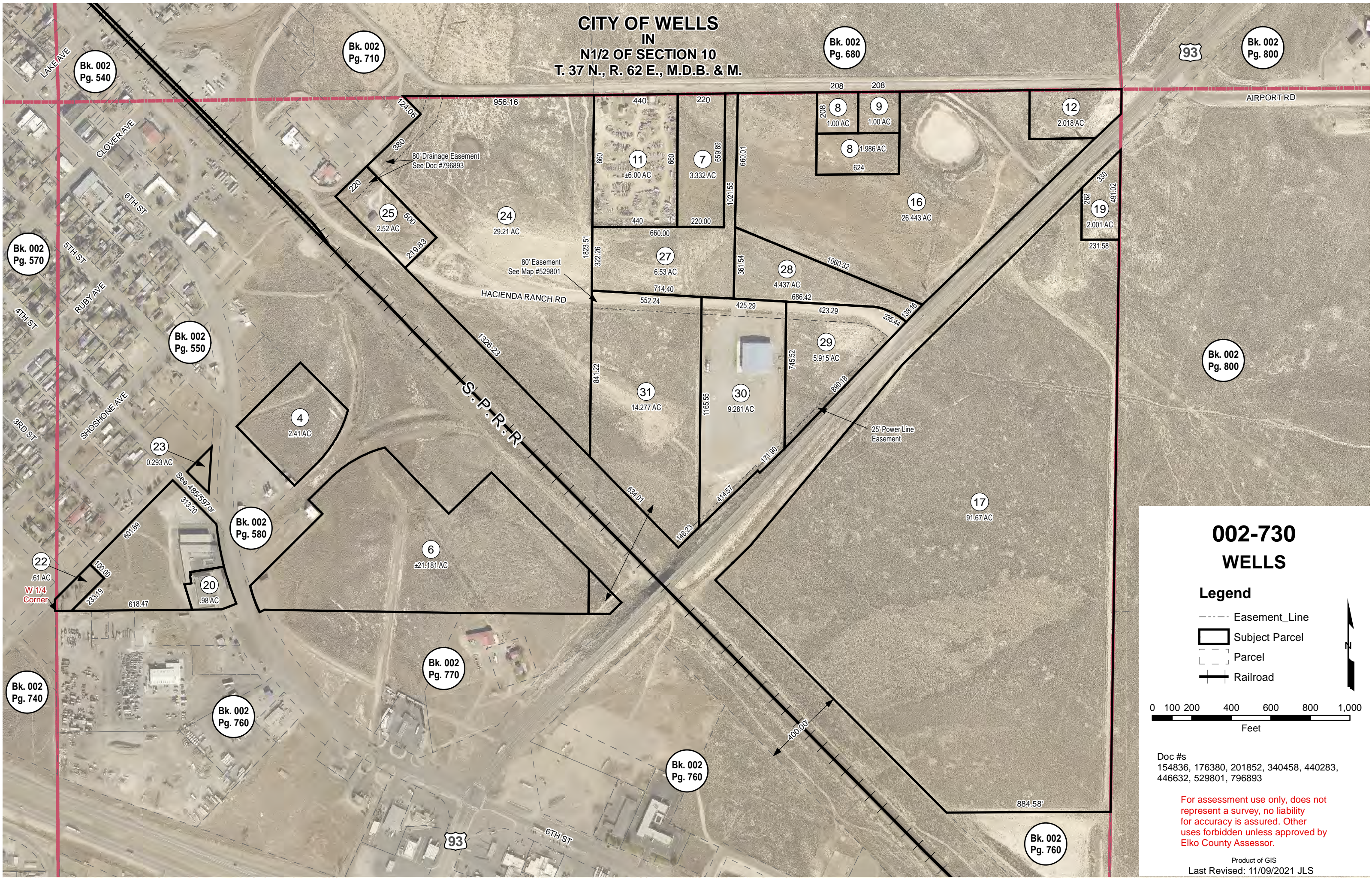


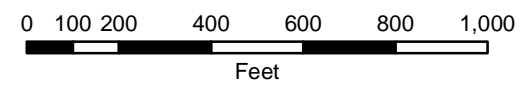
CITY OF WELLS
IN
N1/2 OF SECTION 10
T. 37 N., R. 62 E., M.D.B. & M.



002-730
WELLS

Legend

- Easement_Line
- Subject Parcel
- Parcel
- Railroad



Doc #s
 154836, 176380, 201852, 340458, 440283,
 446632, 529801, 796893

For assessment use only, does not represent a survey, no liability for accuracy is assured. Other uses forbidden unless approved by Elko County Assessor.