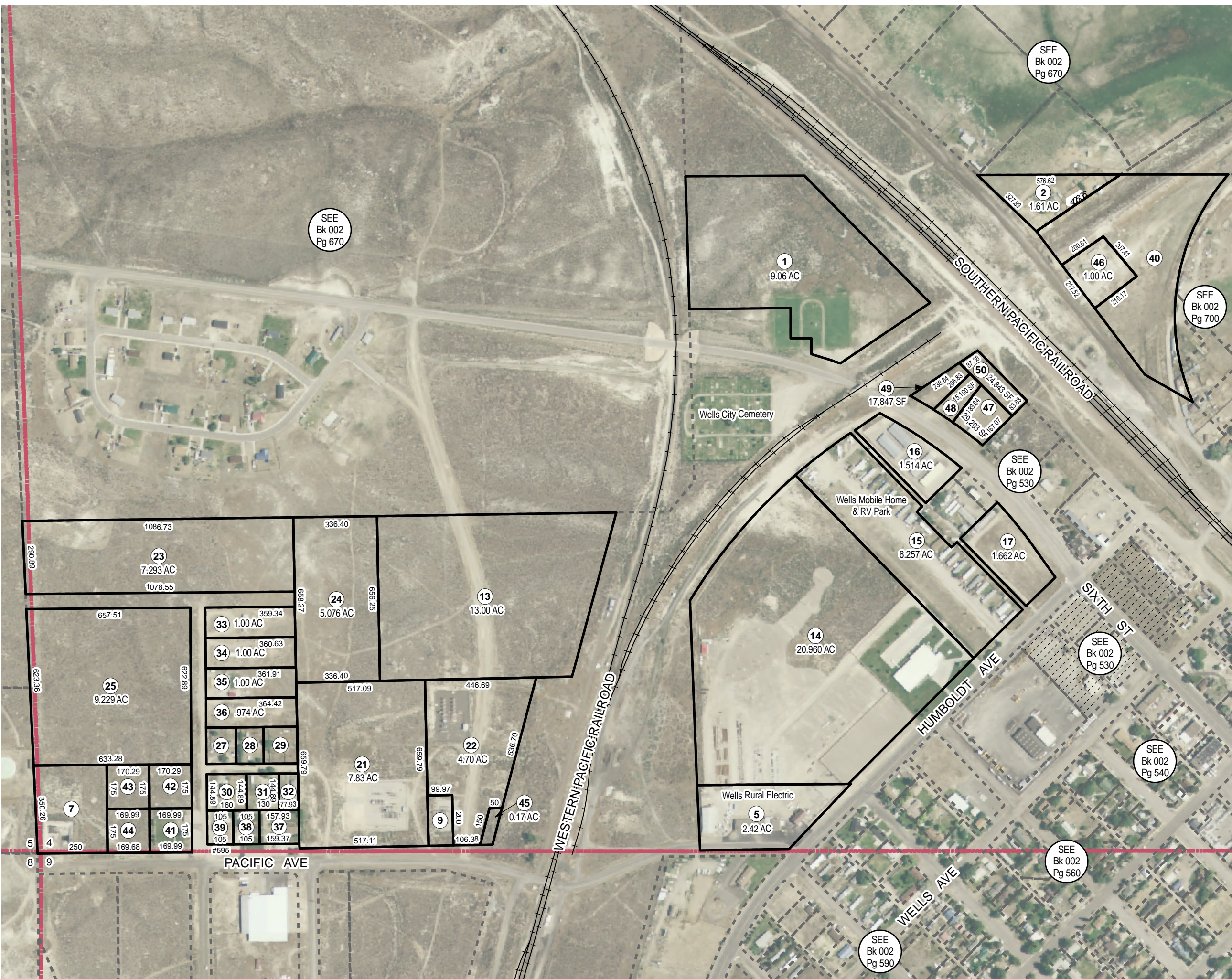
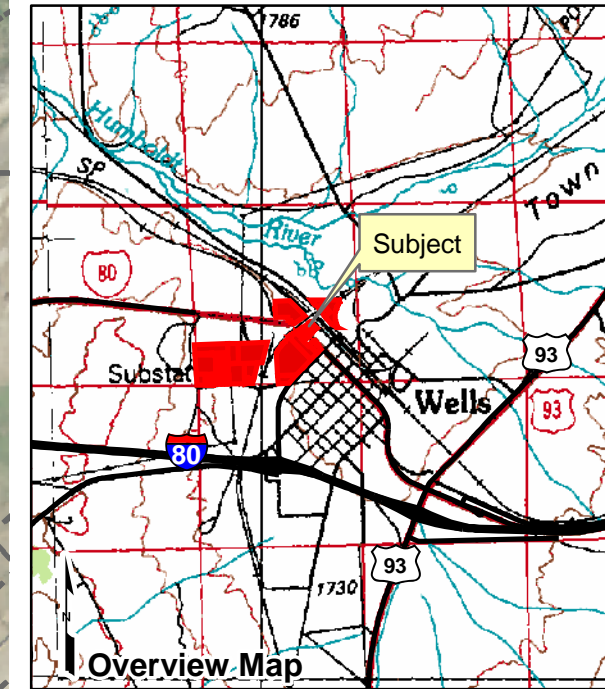


**002-690
City of Wells**

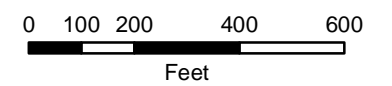
S 1/2 of Sec. 4, T37N R62E
M.D.B.&M.



Legend

- Subject Parcel
- Parcel
- Lot

Reference Documents:
Map # 637309, 637667



For assessment use only, does not represent a survey, no liability for accuracy is assured. Other uses forbidden unless approved by Elko County Assessor.

Product of GIS
Last Update: 03/10/2011