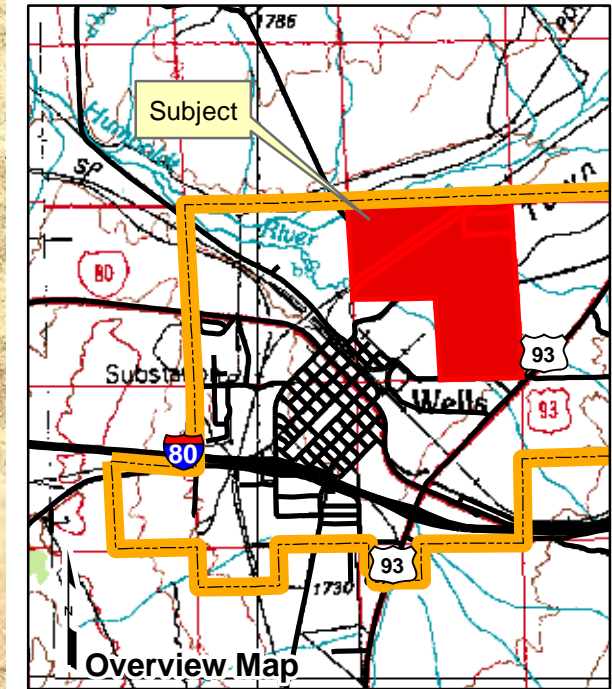



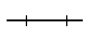
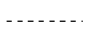


002-680
City of Wells

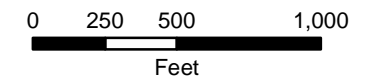
Portion of Sec. 3, T37N R62E
M.D.B.&M.



Legend

-  Subject Parcel
-  Parcel
-  City Limit
-  Railroad
-  Lot

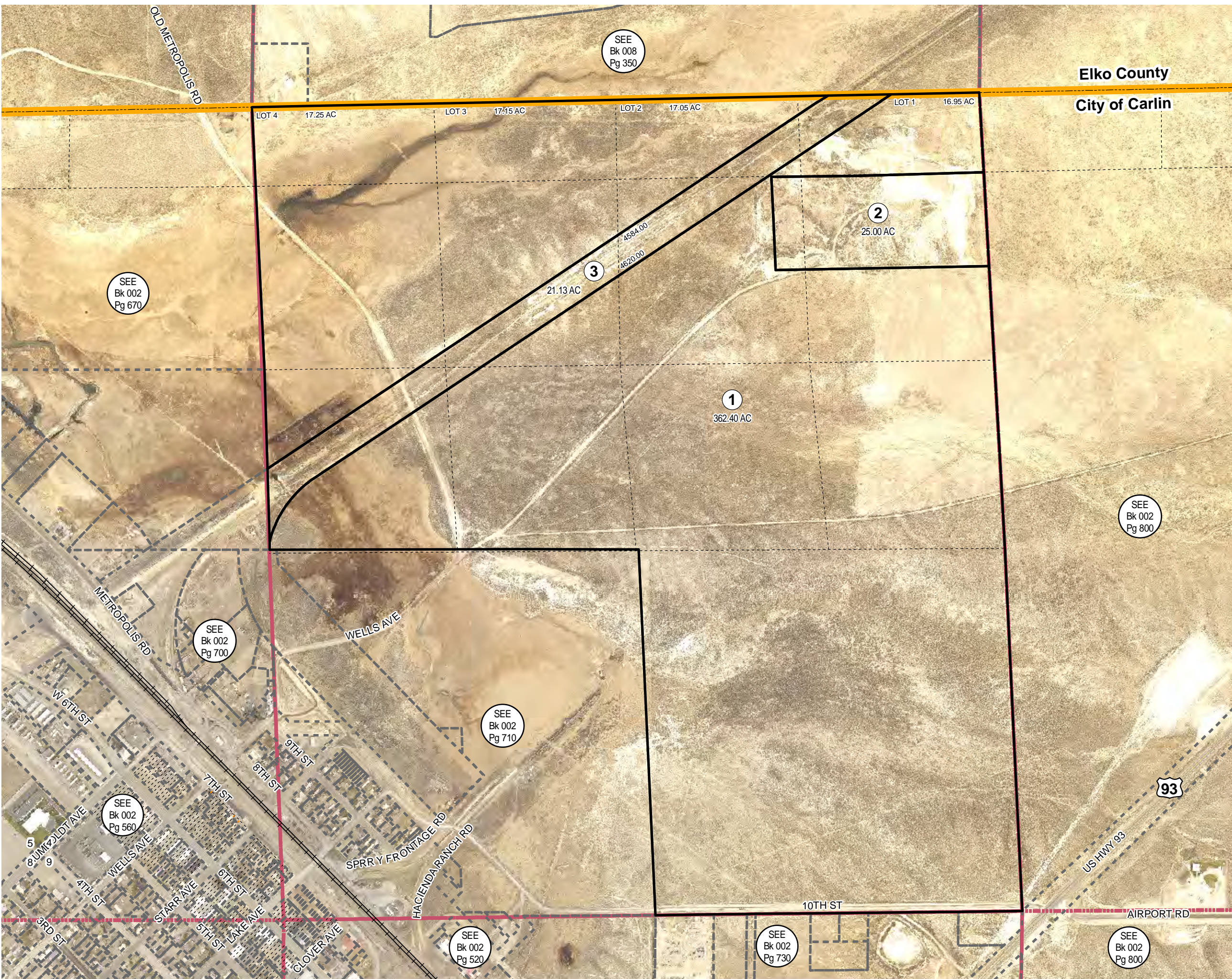
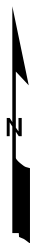
Reference Documents:
Map #



For assessment use only, does not represent a survey, no liability for accuracy is assured. Other uses forbidden unless approved by Elko County Assessor.

Image - 2017 Pictometry Flyover

Product of GIS
Last Update: 02/02/2018



Elko County
City of Carlin

SEE
Bk 008
Pg 350

SEE
Bk 002
Pg 670

SEE
Bk 002
Pg 800

SEE
Bk 002
Pg 700

SEE
Bk 002
Pg 710

SEE
Bk 002
Pg 560

SEE
Bk 002
Pg 520

SEE
Bk 002
Pg 730

SEE
Bk 002
Pg 800